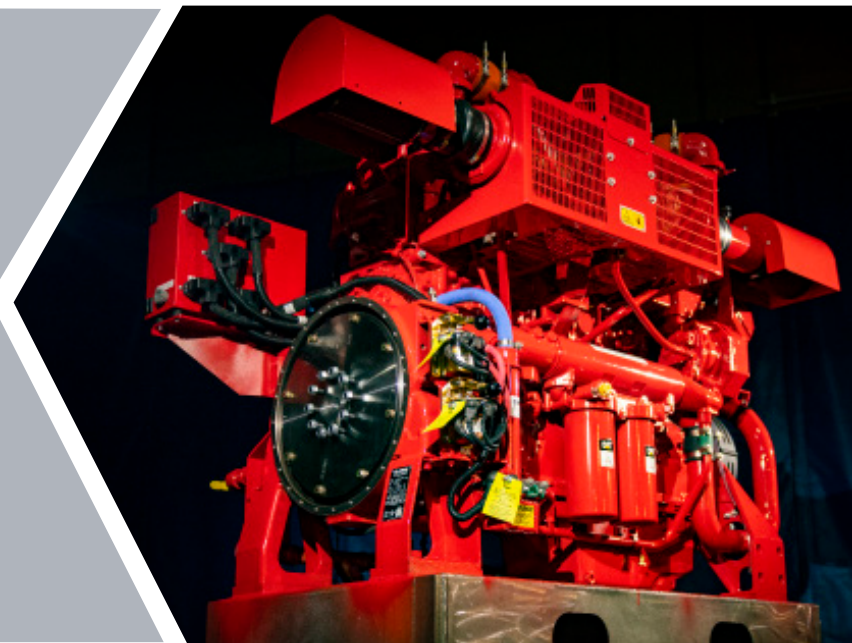


CLARKE®



CLARKE PAINT & COATINGS



Each Clarke product is carefully primed and painted to the highest standard before it leaves our facility. Before any painting or coating begins, the engine is solvent cleaned to remove all oil, grease, and other surface contaminants that could potentially hamper the coating process. Once cleaned, the engine is primed and properly coated to ensure maximum protection. Clarke offers a standard and an epoxy option for engines depending on the application. The environment where the engine will be housed is crucial to determine the correct paint and coatings.

CLARKE®

100 Progress Place, Cincinnati, OH 45246
United States of America
Tel +1-513-475-3473 Fax +1-513-771-8930

Grange Works, Lomand Rd, Coatbridge, ML5-2NN
United Kingdom
Tel +44-1236-429946 Fax +44-1236-427274

www.clarkefire.com

STANDARD

Clarke standard paint (RAL3001) is a staple to the Clarke brand and protects the base engine and its components. Properly preparing, priming, and coating is crucial to the longevity of a fire pump driver. The paint protects against rusting and corrosion, which could compromise the engine.

Each engine with the standard paint option is carefully primed and painted in house, ensuring its reliability. Clarke's standard paint option is suitable for indoor applications that are in moderate environments and not exposed to extreme elements.

OPTIONAL EPOXY

Clarke's optional epoxy paint (RAL 3001) is formulated to provide exceptional adhesion and corrosion resistance when faced with harsh environments, such as industrial, desert, tropical and marine climates. Clarke's epoxy paint process meets the ISO 12944 C5-M class.

