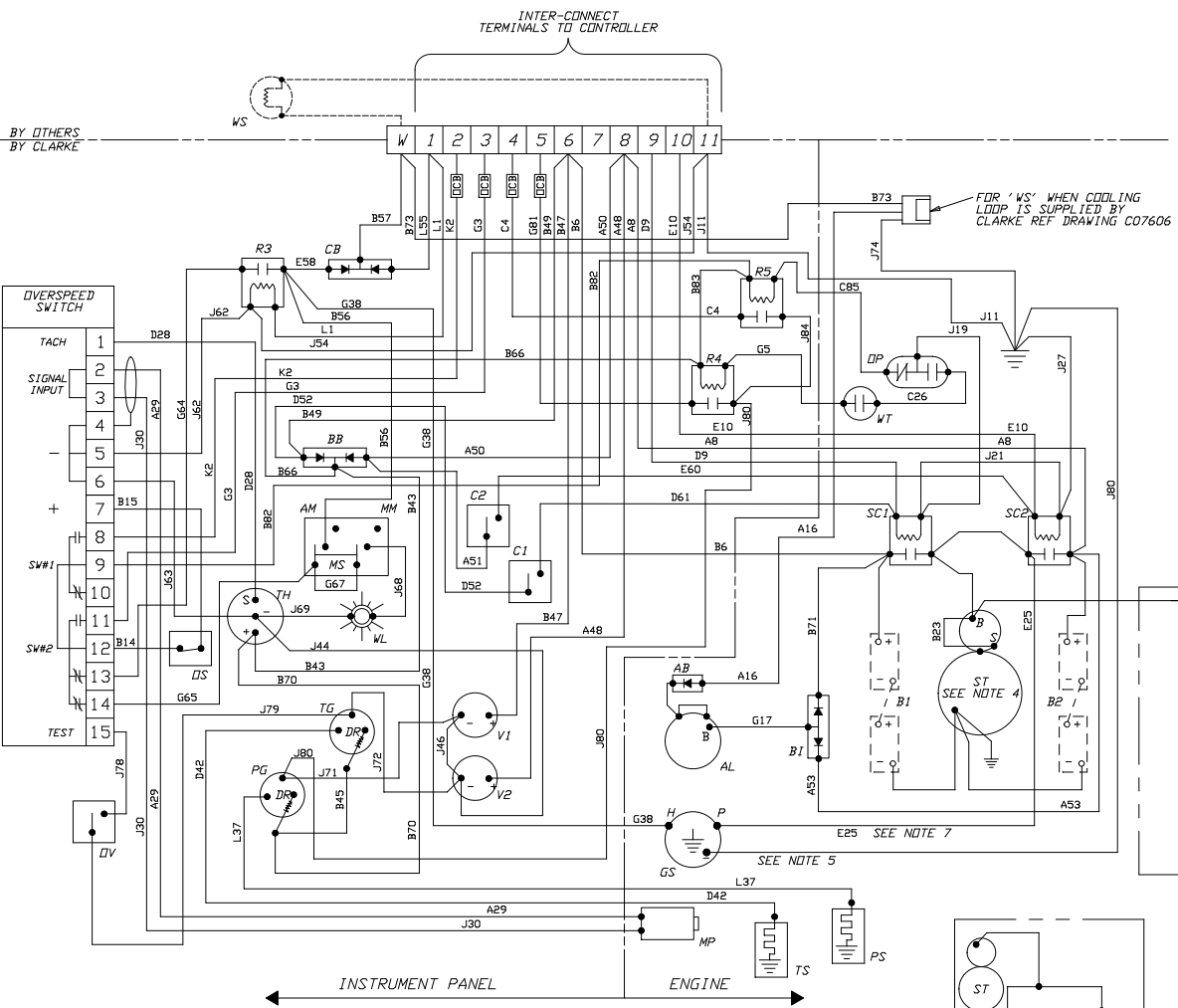


C07602		REV	R	1		
SYM	REVISION	ECN#	DRWN	APVD	DATE	
P	ADDED 12V & 24V WIRING DETAILS FOR TURBOCHARGED MODELS	242	SK	KFE	27MAY03	
Q	ADDED R4, R5, AND WIRES B82, B83, J84642 C85.	4642	MJD	KFE	14MAY09	
R	ADDED OCB TO TERMINAL #'S 2, 3, 4.	51642	MJD	KFE	27MAY09	

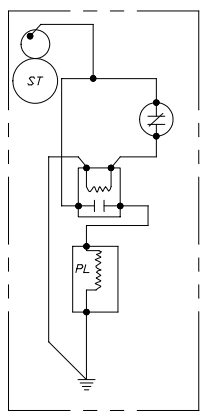
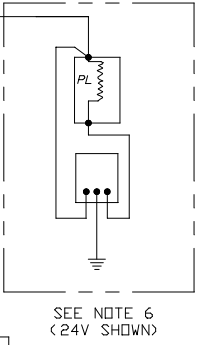
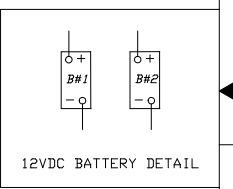


### LEGEND

AB - ALTERNATOR BRIDGE	PL - TURBO PRELUBE SOLENOID
AL - ALTERNATOR	PS - PRESSURE SENDER(LUBE)
AM - AUTOMATIC MODE POSITION	R3 - REMOTE RUN RELAY N.O.
B1 - BATTERY #1	R4 - WATER TEMP ALARM RELAY N.O.
B2 - BATTERY #2	R5 - LOW OIL PRESSURE ALARM RELAY N.O.
BB - BATTERY BRIDGE	SC1 - STARTER CONTACTOR BATT#1
BI - BATTERY ISOLATOR	SC2 - STARTER CONTACTOR BATT#2
C1 - CRANK(MANUAL) SWITCH-BATT#1	SI - STARTER ISOLATOR
C2 - CRANK(MANUAL) SWITCH-BATT#2	ST - STARTER
CB - COOLANT BRIDGE	SW#1 - CRANK TERMINATE
DR - DROPPING RESISTOR(24V ONLY)	SW#2 - OVERSPEED
GS - GOVERNOR SOLENOID	TG - TEMPERATURE GAUGE(WATER)
MM - MANUAL MODE POSITION	TH - TACHOMETER - HOURMETER
MP - MAGNETIC PICK-UP	TS - TEMPERATURE SENDER(WATER)
MS - MODE SELECTOR	V1 - VOLTMETER / BATT#1
OCB - OVER-CURRENT BREAKER	V2 - VOLTMETER / BATT#2
DP - OIL PRESSURE 20#	WL - WARNING LAMP, *CONTROLS NOT IN AUTOMATIC POSITION
OS - OVERSPEED RESET N.C.	WS - WATER SOLENOID VALVE
OV - OVERSPEED VERIFY @ 67%	WT - WATER TEMPERATURE N.O. SW 205°F
PG - PRESSURE GAUGE(LUBE)	

### COLOR CODE

A - WHITE	G - BLUE
B - RED	I - PINK
C - ORANGE	J - BLACK
D - YELLOW	K - BROWN
E - GREEN	L - GRAY
F - GREEN	M - PURPLE
G - BLUE	



- NOTES:
- BROKEN LINE < - > SYMBOLS INDICATE COMPONENTS NOT SUPPLIED BY CLARKE.
  - REFER TO ENGINE MODEL INSTALLATION DATA SHEET FOR SPECIFIC BATTERY AND CABLE SIZE REQUIREMENTS.
  - 12 VOLT SYSTEM DOES NOT INCLUDE THE TWO (DR) DROPPING RESISTORS. RED WIRES (B) CONNECT DIRECTLY TO PG & TG RESPECTIVELY.
  - SOME MODELS HAVE A STARTER THAT IS INTERNALLY GROUNDED; FOR THOSE THE BATTERY NEGATIVE CABLE (GRD) SHOULD BE ATTACHED TO THE ENGINE BLOCK (ALL PAINT SHOULD BE REMOVED TO BARE METAL)
  - JDFP ONLY - ALL OTHER HAVE INTERNAL GROUND.
  - 1K6 TURBOCHARGED MODEL ENGINES ONLY.
  - WIRES E25 IS NOT USED ON 1K6 NATURALLY ASPIRATED ENGINES.

**FOR ENGINES BUILT BEGINNING IN MAY 2009**

CONTROLLED DRAWING

This is a registered part with FM/UL for use on an approved/ listed fire pump driver. No substitutions are allowed. Consult engineering prior to and regarding any change.

THIS DRAWING AND THE INFORMATION HEREIN ARE OUR PROPERTY AND MAY BE USED BY OTHERS ONLY AS AUTHORIZED BY US. UNLESS OTHERWISE SPECIFIED TOLERANCES ARE:		<table border="1"> <tr><td>DRAWN</td><td>TROY POPE</td></tr> <tr><td>DATE</td><td>09JAN95</td></tr> <tr><td>ENGR</td><td>JTWHITNEY</td></tr> <tr><td>CHECK</td><td></td></tr> <tr><td>INSPECT</td><td>N</td></tr> </table>	DRAWN	TROY POPE	DATE	09JAN95	ENGR	JTWHITNEY	CHECK		INSPECT	N	<table border="1"> <tr><td>SCALE</td><td>NONE</td></tr> <tr><td>UNITS</td><td>NONE</td></tr> <tr><td>SHEET</td><td>1 OF 1</td></tr> </table>	SCALE	NONE	UNITS	NONE	SHEET	1 OF 1							
DRAWN	TROY POPE																									
DATE	09JAN95																									
ENGR	JTWHITNEY																									
CHECK																										
INSPECT	N																									
SCALE	NONE																									
UNITS	NONE																									
SHEET	1 OF 1																									
<table border="1"> <tr><td>DECIMAL</td><td>MM</td><td>IN</td></tr> <tr><td>XX</td><td>±</td><td>±</td></tr> <tr><td>XXX</td><td>±</td><td>±</td></tr> <tr><td>FRACTIONAL</td><td></td><td></td></tr> <tr><td>ANGULAR</td><td></td><td></td></tr> </table>	DECIMAL	MM	IN	XX	±	±	XXX	±	±	FRACTIONAL			ANGULAR			<table border="1"> <tr><td>SERIES CODE</td><td>MP</td></tr> </table>	SERIES CODE	MP	<table border="1"> <tr><td>SIZE</td><td>C</td></tr> <tr><td>PART NO.</td><td>C07602</td></tr> </table>	SIZE	C	PART NO.	C07602	<table border="1"> <tr><td>REV</td><td>R</td></tr> </table>	REV	R
DECIMAL	MM	IN																								
XX	±	±																								
XXX	±	±																								
FRACTIONAL																										
ANGULAR																										
SERIES CODE	MP																									
SIZE	C																									
PART NO.	C07602																									
REV	R																									
<p>CLARKE</p> <p>WIRING DIAGRAM, F.P. ENGINE w/ELECTRIC GAUGES</p> <p>NEGATIVE GROUND, 12 or 24VDC</p>																										

C07602 REV R