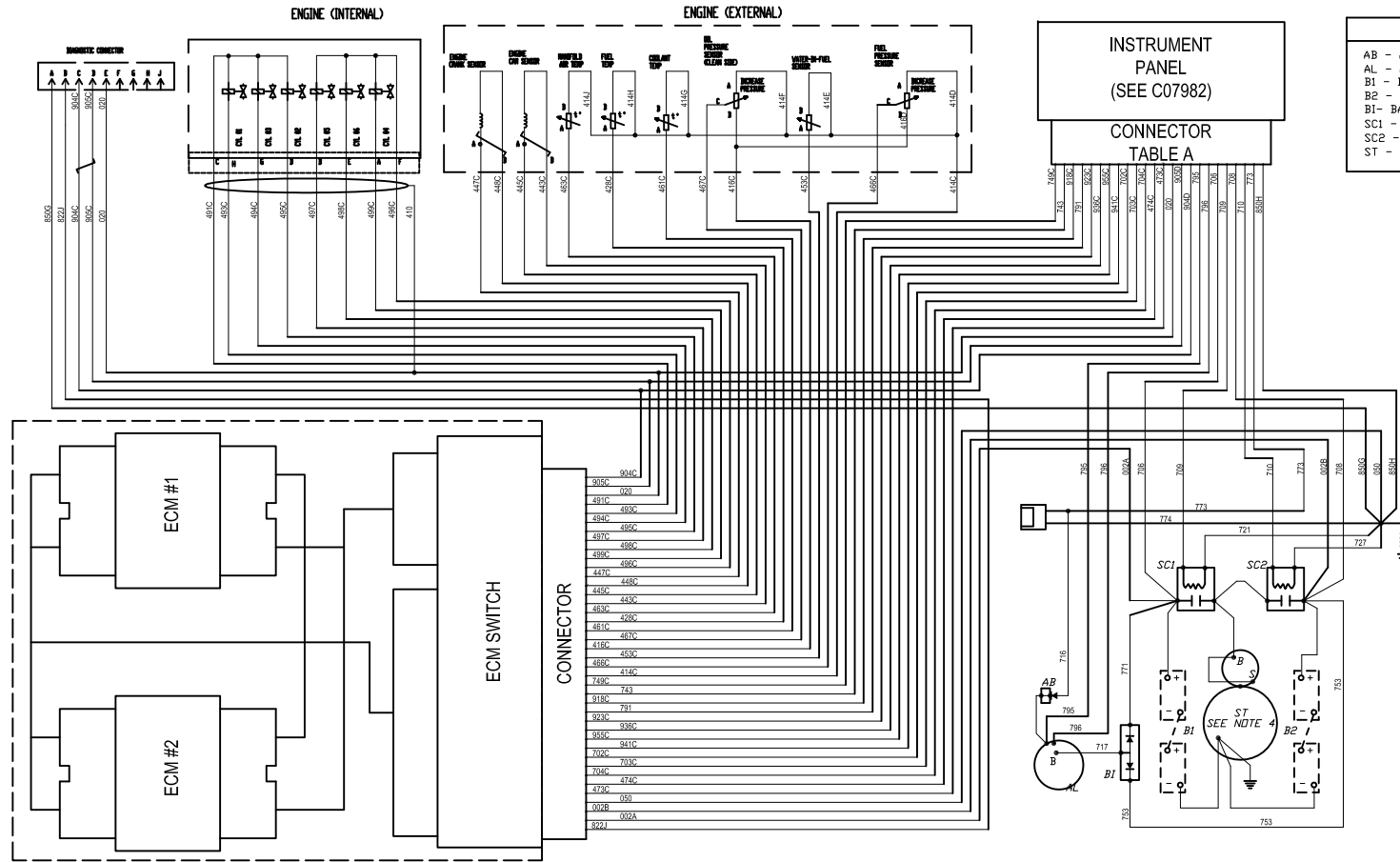


REV	DESCRIPTION	ECN#	DWN	APVD	DATE
A	ISSUED DRAWING	207	KJK	KJE	15NOV04
B	REVISED DRAWING	207	KJK	KJE	16JUN05
C	ADDED LEGEND AND NOTES	207	ACH	KJE	03AUG05

**LEGEND**

- AB - ALTERNATOR BRIDGE
- AL - ALTERNATOR
- B1 - BATTERY #1
- B2 - BATTERY #2
- B1- BATTERY ISOLATOR
- SC1 - STARTER CONTACTOR BATT #1
- SC2 - STARTER CONTACTOR BATT #2
- ST - STARTER



NOTES:  
 1. REFER TO ENGINE MODEL INSTALLATION DATA SHEET FOR SPECIFIC BATTERY AND CABLE SIZE REQUIREMENTS.

<small>THIS DRAWING AND THE INFORMATION HEREON ARE OUR PROPERTY AND MAY BE USED BY OTHERS ONLY AS AUTHORIZED BY US. UNLESS OTHERWISE NOTED, ALL RIGHTS ARE RESERVED UNDER THE COPYRIGHT LAWS.</small>		CONTROLLED DRAWING		<b>CLARKE</b> Fire Protection Products, Inc.	
<small>UNLESS OTHERWISE SPECIFIED TO DIMENSIONS:</small> DECIMAL: .0005" .0010" .0015" .0020" .0025" .0030" .0035" .0040" .0045" .0050" .0055" .0060" .0065" .0070" .0075" .0080" .0085" .0090" .0095" .0100" FRACTIONAL: 1/32" 3/32" 1/16" 3/16" 1/8" 5/16" 3/8" 7/16" 1/2" 5/8" 3/4" 7/8" 1"	DRWN: KJKUNKLER DATE: 28MAR04 ENGR: KJKUNKLER	NAME: <b>DIAGRAM, WIRING - JX</b>		PART NO: <b>C07957</b>	
MATERIAL: N/A USED ON / LAYOUT PART NO:	SCALE: NTS UNITS: MM [INCH]	PAGE: 1 OF 1		REV: C	

REV	DESCRIPTION	ECN#	DWN	APVD	DATE
A	ISSUED DRAWING	207	KJK	<i>fje</i>	15NDV04
B	REVISED DRAWING TO ADD LOC.	207	KJK	<i>fje</i>	16JUN05
C	ADDED LEAD, REV TERMINAL 13 & 14 AND SHUTDOWN, ISOLATE TERMINALS	207	ACH	<i>fje</i>	17AUG05
D	ADDED CWS,TST,PCI,PC2,EBL TO LEGEND	207	ASC	<i>fje</i>	19NDV07
E	ADDED DCB TO TERMINAL #'S 2, 3, 4, 5, 301, 302.	1642	HJD	<i>fje</i>	27MAY09

**LEGEND**

- AM - AUTOMATIC MODE POSITION
- BES - BUMP SPEED ENABLE SWITCH
- BSS - BUMP SPEED SWITCH
- CBD - COOLANT BRIDGE DIODE
- CDR - CRANK DISCONNECT RELAY
- CSI - CRANK SWITCH - BATTERY #1
- CSE - CRANK SWITCH - BATTERY #2
- CWS - COOLING WATER SOLENOID
- DIG - DIAGNOSTIC GAUGE
- EBL - REDUNDANT ECM LAMP
- ECS - ECM SELECTOR SWITCH
- ERR - ENGINE RUN RELAY
- ESR - ENGINE SHUTDOWN RELAY
- GFR - GENERAL FAULT RELAY
- HR - HOURMETER
- HW/T - HIGH WATER TEMP RELAY
- LDR - LDW DIL RELAY
- MDS - MODE SELECTOR SWITCH
- MM - MANUAL MODE POSITION
- NML - MANUAL MODE LAMP
- MSS - MANUAL SHUTDOWN SWITCH
- DCB - OVER-CURRENT BREAKER
- DRS - DIVERSPEED RESET SWITCH
- DSR - DIVERSPEED ALARM RELAY
- PCI - PANEL HARNESS CONNECTOR (INSIDE PANEL)
- PC2 - ENGINE HARNESS PANEL CONNECTOR
- STR - SHUTDOWN TIMER RELAY
- TST - TERMINAL STRIP
- V/S - VOLTMETER BATTERY SELECTOR SWITCH
- V/MG - VOLTMETER GAUGE

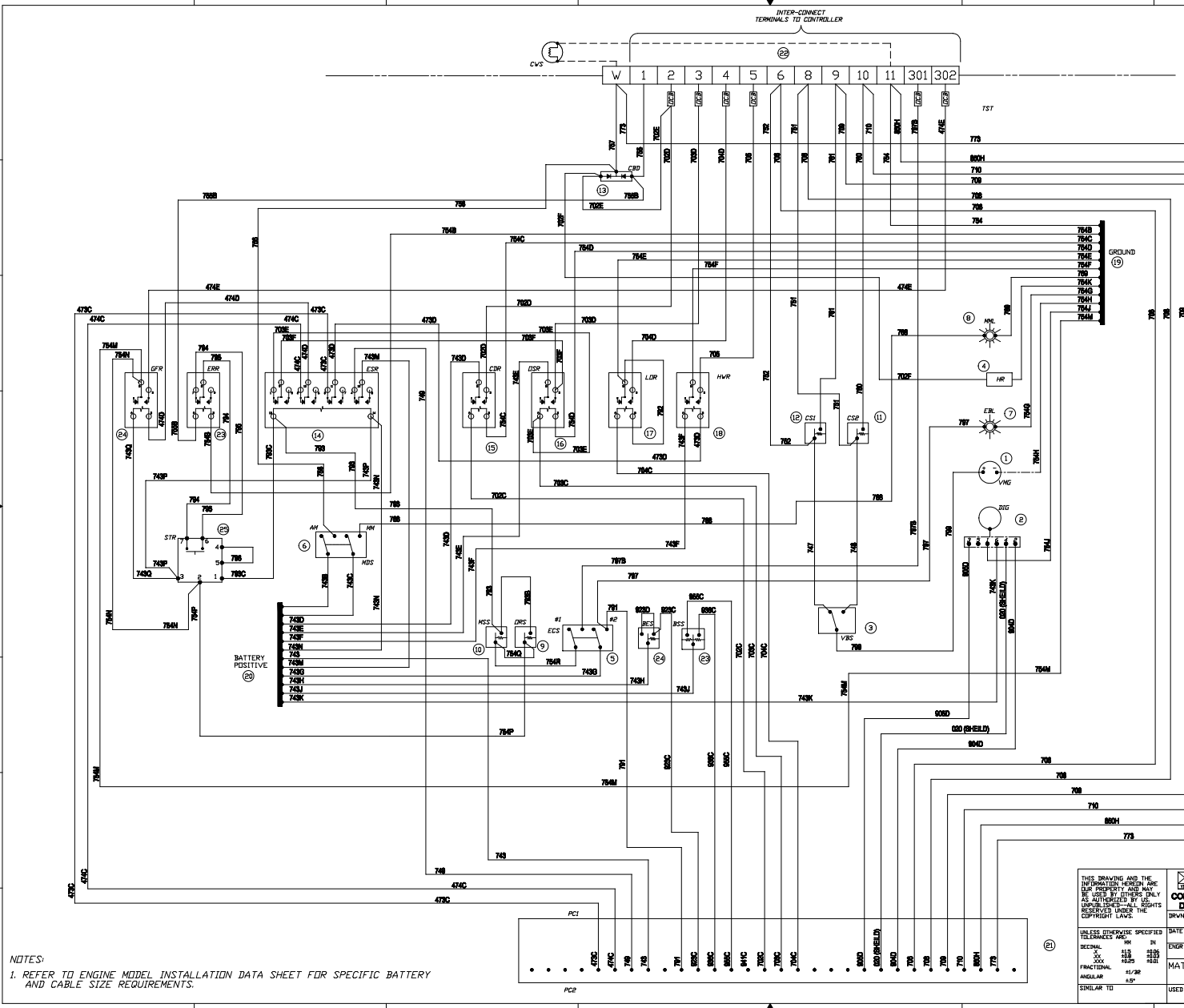
**CONTROLLED DRAWING**  
 This is a registered part with a copyright agency for use on an approved/listed fire pump driver. No substitutions are allowed. Consult engineering prior to and regarding any change.

**CLARKE**  
 Fire Protection Products, Inc.

THIS DRAWING AND THE INFORMATION HEREIN ARE THE PROPERTY OF CLARKE. NO PART OF THIS DRAWING MAY BE USED BY OTHERS WITHOUT THE WRITTEN PERMISSION OF CLARKE. ALL RIGHTS RESERVED UNDER THE COPYRIGHT LAWS.	<input checked="" type="checkbox"/> CONTROLLED DRAWING
DRWN: KJKUNKLER	DATE: 28MAR04
ENGR: KJKUNKLER	
MATERIAL: N/A	
SCALE: NTS	UNITS: MM [INCH]
USED IN / LAYOUT PART NO:	PAGE: 1 OF 1

DIAGRAM, WIRING -  
 JX INSTR. PANEL

PART NO: C07982



**NOTES:**  
 1. REFER TO ENGINE MODEL INSTALLATION DATA SHEET FOR SPECIFIC BATTERY AND CABLE SIZE REQUIREMENTS.