

DATUMS:

- A- - MOUNTING FACE OF FLYWHEEL
- B- - ENGINE CRANKSHAFT HORIZONTAL \updownarrow
- C- - ENGINE CRANKSHAFT VERTICAL \updownarrow
- CENTER OF GRAVITY
- CLOCKWISE (CW) ROTATION WHEN VIEWED FROM FRONT OF ENGINE

CAUTION:

ALL PLUMBING MUST BE SUPPORTED AND/OR ISOLATED SO THAT NO WEIGHT OR STRESS IS APPLIED TO ANY ENGINE COMPONENT

ATTENTION:

REFER TO THE SPECIFIC MODELS' "INSTALLATION AND OPERATION DATA" FOR INSTALLATION GUIDELINES

AVAILABLE MODELS:

DQ6H-UFAA4G, DQ6H-UFAA48, DQ6H-UFAA50, DQ6H-UFAA60, DQ6H-UFAA88, DQ6H-UFAA98

*DQ6H-UFKA4G, DQ6H-UFKA48, DQ6H-UFKA50, DQ6H-UFKA60, DQ6H-UFKA88, DQ6H-UFKA98

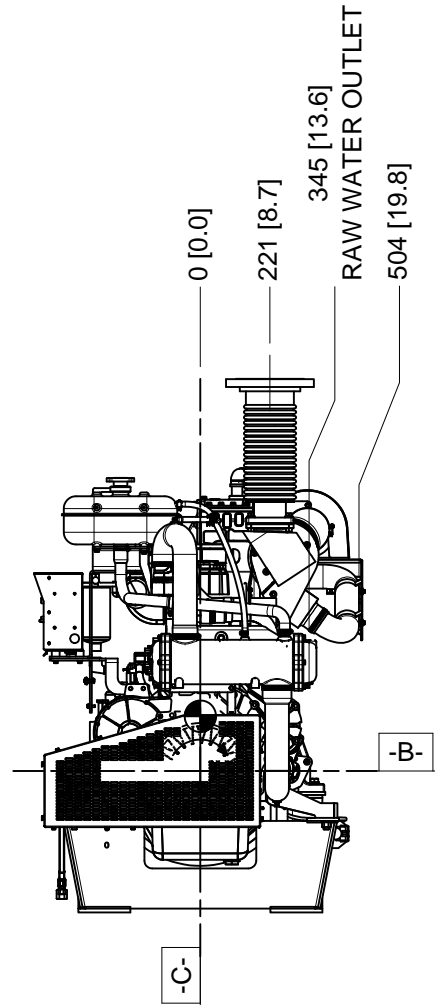
(ALL MODELS ARE TURBOCHARGED WITH JACKET WATER AFTER COOLING)

NOTES:

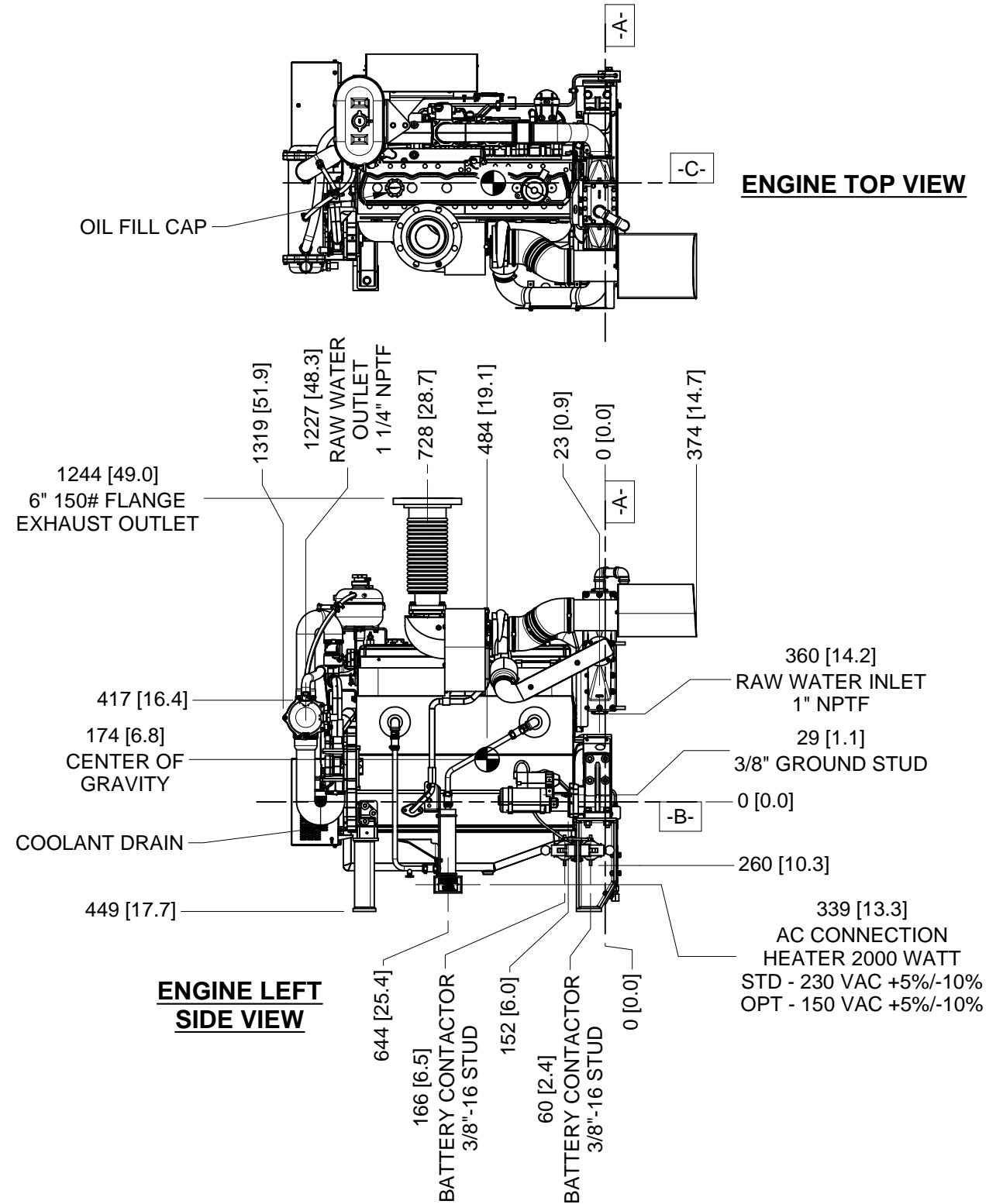
- 1) FUEL SUPPLY PIPING FROM TANK TO ENGINE SHOULD BE 1/2" MINIMUM PIPE DIAMETER
- 2) FUEL RETURN PIPING FROM TANK TO ENGINE SHOULD BE 3/8" MINIMUM PIPE DIAMETER

DRAWING SUBJECT TO CHANGE WITHOUT NOTICE

DO NOT SCALE



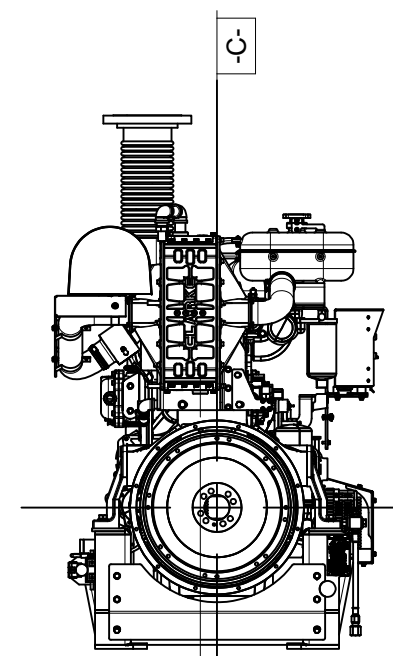
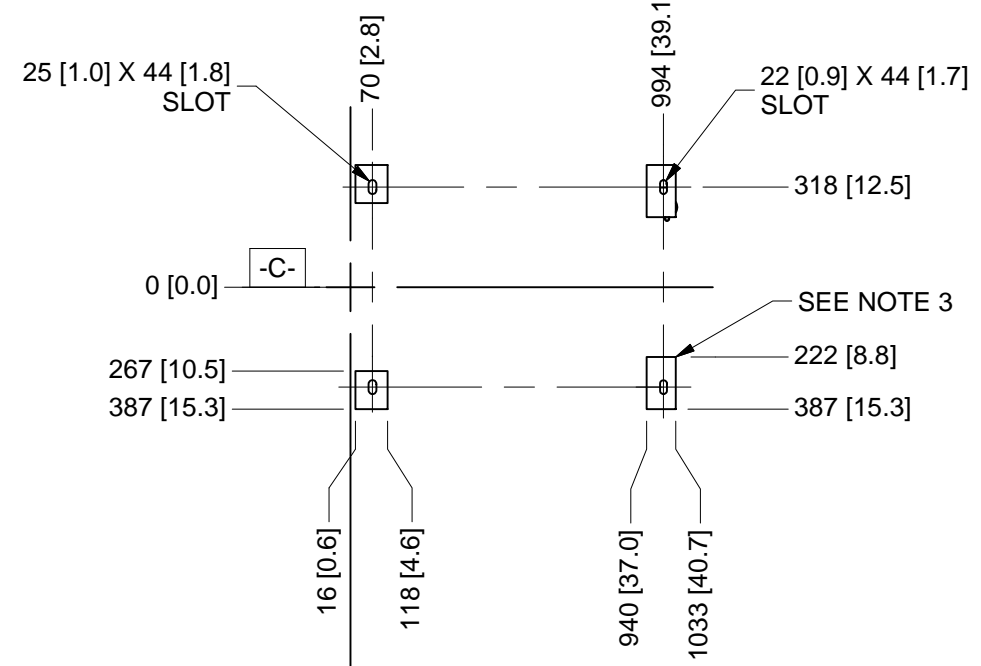
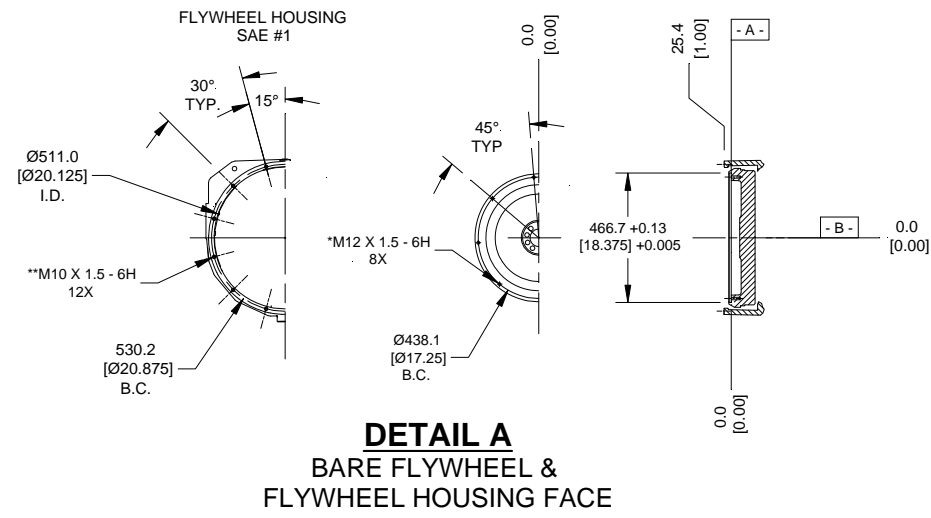
ENGINE FRONT VIEW



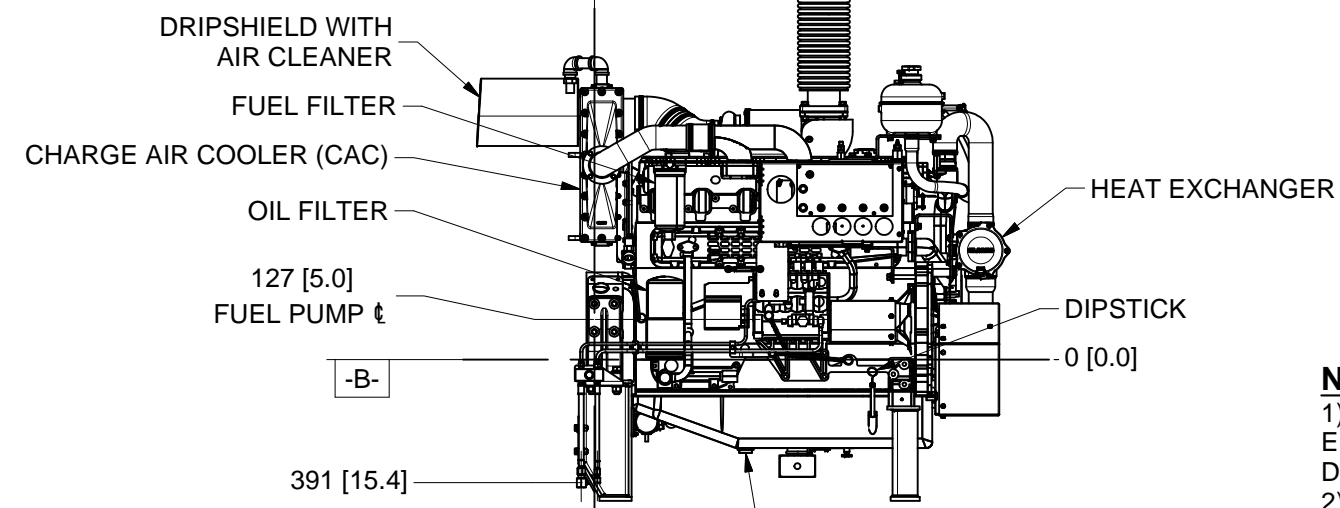
ENGINE LEFT SIDE VIEW

REV	DESCRIPTION	ECN#	DWN	APVD	DATE
B	REMOVED DQ6H-UFAA58 ENGINE MODEL	2103	MJD	<i>MJD</i>	28JAN11
C	UPDATED CAC LOCATION	2103	RJT	<i>RJT</i>	18FEB11
D	ADDED DQ6H-UFAA4G	2103	MJD	<i>MJD</i>	03MAR11
E	CENTERLINE HEIGHT WAS 450 [17.7]	2103	RJT	<i>RJT</i>	01APR11
F	*ADDED -UFKA MODELS & REVISED FLYWHEEL HOUSING DETAIL	2103	JCA	<i>JCA</i>	23MAY11

<small>THIS DRAWING AND THE INFORMATION HEREON ARE OUR PROPERTY AND MAY BE USED BY OTHERS ONLY AS AUTHORIZED BY US. UNPUBLISHED--ALL RIGHTS RESERVED UNDER THE COPYRIGHT LAWS</small>		<input type="checkbox"/> YES <input checked="" type="checkbox"/> NO	CLARKE Fire Protection Products, Inc.
CONTROLLED DRAWING		DRWN RTOLLE DATE 12/9/2010 ENGR KKUNKLER	
MACHINE TOLERANCE DECIMAL mm inch X ± 1.5 ± 0.06 X.X ± 0.8 ± 0.03 X.XX ± 0.3 ± 0.03 X.XXX ± 0.025 ± 0.01 X.XXXX ± 0.001 ± 0.001 ANGULAR: ± 0.5°		NAME INSTALLATION DRAWING, DQ6H-UFAA/-UFKA MODELS, DIESEL FIRE PUMP DRIVER	
FABRICATION TOLERANCE DECIMAL mm inch X ± 3 ± 0.12 X.X ± 1.5 ± 0.12 X.XX ± 1.5 ± 0.06 X.XXX ± 1.0 ± 0.06 ANGULAR: ± 1.0°		MATERIAL PART NO. D658 ASSEMBLY DQ6H-UFAA/-UFKA SCALE NTS UNITS MM [INCH] PAGE 1 OF 2	



ENGINE REAR VIEW



ENGINE RIGHT SIDE VIEW

53 [2.1]
RAW WATER INLET
1" NPTF
(ON BOTTOM OF
CHARGE AIR COOLER)

42 [1.6]
FUEL SUPPLY CONN.
1/2" NPTF
SEE NOTE 1

9 [0.4]
FUEL RETURN CONN.
3/8" NPTF
SEE NOTE 2

- NOTES:**
- 1) FUEL SUPPLY PIPING FROM TANK TO ENGINE SHOULD BE 1/2" MINIMUM PIPE DIAMETER
 - 2) FUEL RETURN PIPING FROM ENGINE TO TANK SHOULD BE 3/8" MINIMUM PIPE DIAMETER
 - 3) ENGINE MOUNTING FEET ARE SYMMETRICAL ABOUT CRANKSHAFT CENTERLINE DATUM -C-

THIS DRAWING AND THE INFORMATION HEREON ARE OUR PROPERTY AND MAY BE USED BY OTHERS ONLY AS AUTHORIZED BY US. UNPUBLISHED—ALL RIGHTS RESERVED UNDER THE COPYRIGHT LAWS.		<input type="checkbox"/> YES <input checked="" type="checkbox"/> NO CONTROLLED DRAWING	CLARKE <i>Fire Protection Products, Inc.</i>	
MACHINE TOLERANCE DECIMAL mm inch X ± 1.5 ± 0.06 X.X ± 0.8 ± 0.03 X.XX ± 0.3 ± 0.01 X.XXX ± 0.025 ± 0.001 X.XXXX ± 0.001 ± 0.0001 ANGULAR: ± 0.5°		DRWN RTOLLE DATE 12/9/2010 ENGR KKUNKLER	NAME INSTALLATION DRAWING, DQ6H-UFAA/-UFKA MODELS, DIESEL FIRE PUMP DRIVER	
FABRICATION TOLERANCE DECIMAL mm inch X ± 3 X.X ± 1.5 ± 0.12 X.XX ± 0.8 ± 0.06 ANGULAR: ± 1.0°		MATERIAL	PART NO. D658	REV F
ASSEMBLY DQ6H-UFAA/-UFKA		SCALE NTS	UNITS MM [INCH]	PAGE 2 OF 2