

**DATUMS:**

- A- - MOUNTING FACE OF FLYWHEEL
- B- - ENGINE CRANKSHAFT HORIZONTAL CENTERLINE
- C- - ENGINE CRANKSHAFT VERTICAL CENTERLINE
- CENTER OF GRAVITY OF ENGINE
- CLOCKWISE ROTATION WHEN VIEWED FROM FRONT OF ENGINE

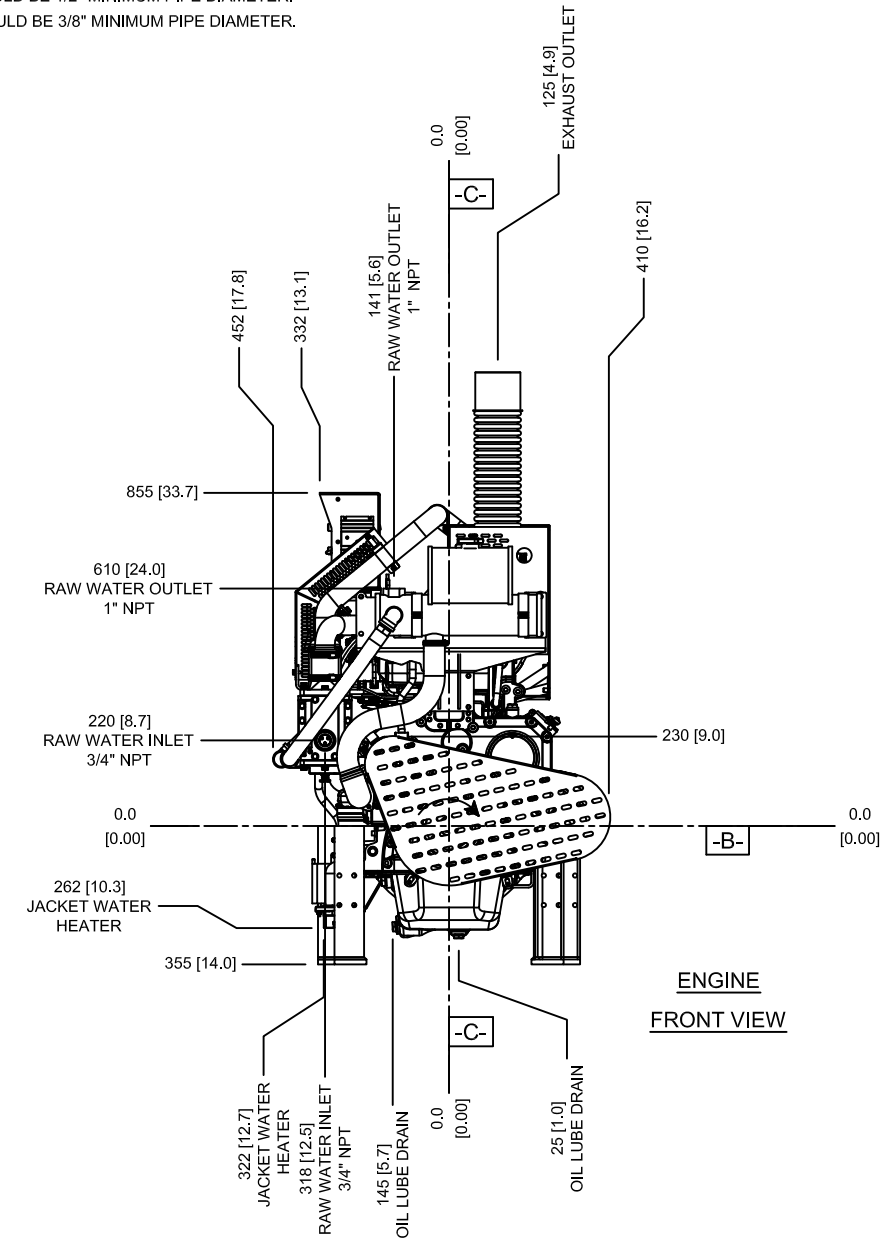
- NOTES:**
- FUEL SUPPLY PIPING FROM TANK TO ENGINE SHOULD BE 1/2" MINIMUM PIPE DIAMETER.
  - FUEL RETURN PIPING FROM ENGINE TO TANK SHOULD BE 3/8" MINIMUM PIPE DIAMETER.

**CAUTION:**  
ALL PLUMBING MUST BE SUPPORTED AND/OR ISOLATED SO THAT NO WEIGHT OR STRESS IS APPLIED TO ANY ENGINE COMPONENT

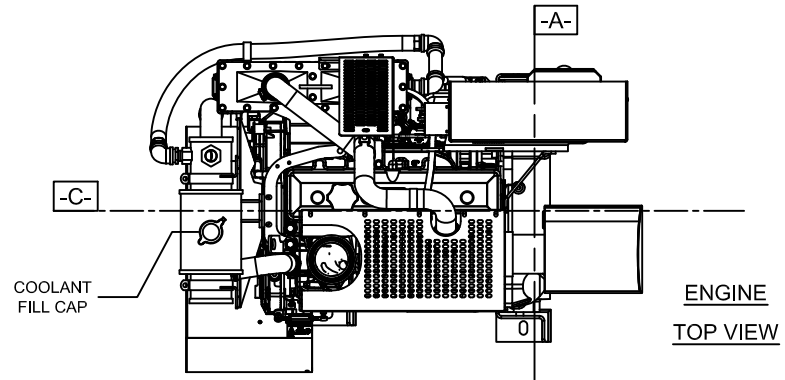
**ATTENTION:**  
REFER TO THE SPECIFIC MODEL 'INSTALLATION AND OPERATION DATA' FOR INSTALLATION GUIDELINES

"TRWA"  
(TURBOCHARGED  
w/RAW WATER  
AFTERCOOLING)  
MODELS

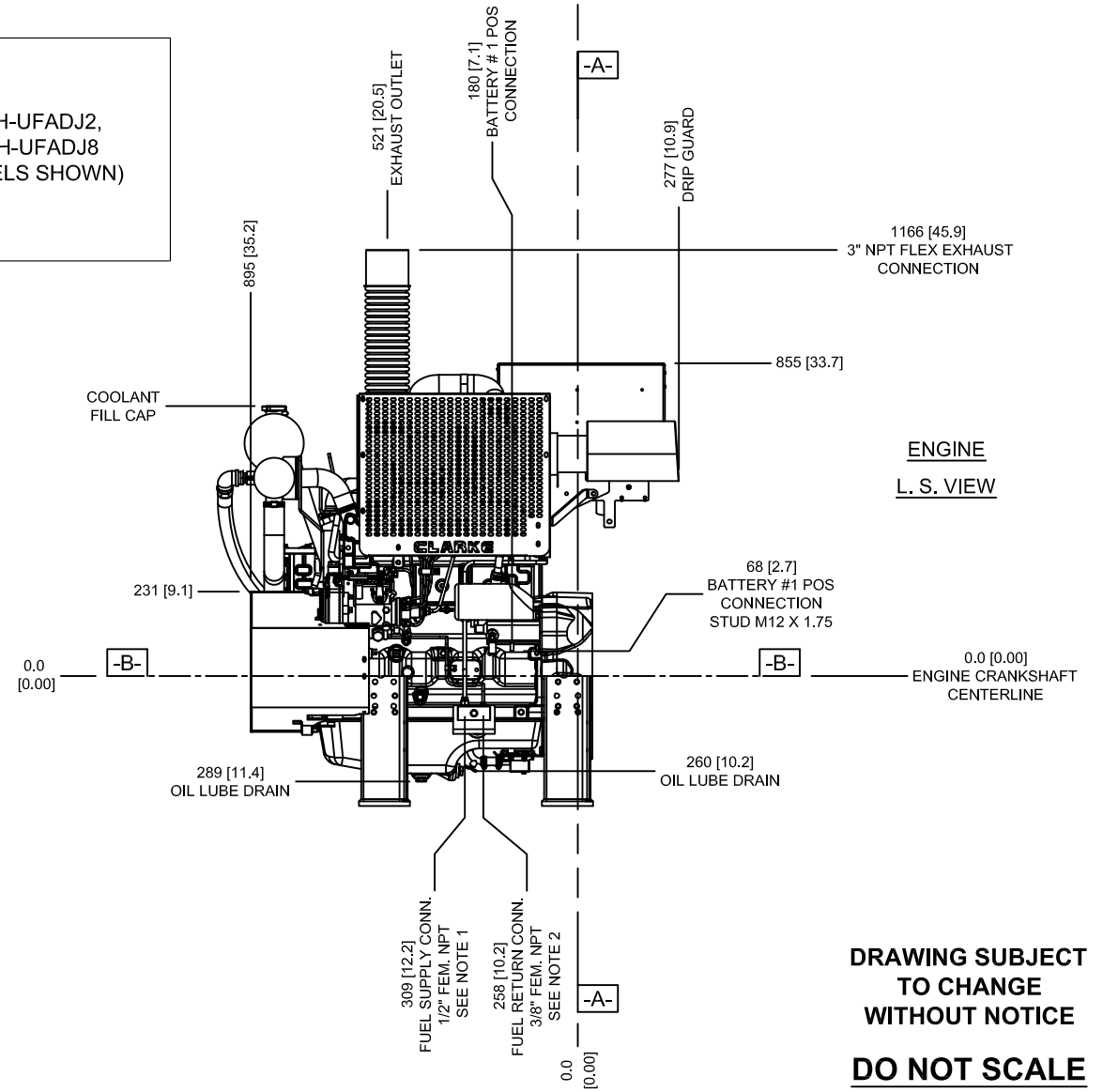
JU4H-UFADJ2,  
JU4H-UFADJ8  
(MODELS SHOWN)



ENGINE  
FRONT VIEW



ENGINE  
TOP VIEW



ENGINE  
L. S. VIEW

**DRAWING SUBJECT  
TO CHANGE  
WITHOUT NOTICE**

**DO NOT SCALE**

REV	DESCRIPTION	ECN#	DWN	APVD	DATE
A	ISSUED ENGINEERING DRAWING	1627	JCA	KJK	05AUG10
B	ADDED RAW WATER IN/OUT SIZES	1627	MJD	MJD	28OCT10
C	3" NPT FLEX EXHAUST WAS 4" NPT	1627	JCA	KJK	23NOV10
D	REMOVED ENGINE JU4H-UFADHG	1627	DKP	KRW	08APR11

<small>THIS DRAWING AND THE INFORMATION HEREON ARE OUR PROPERTY AND MAY BE USED BY OTHERS ONLY AS AUTHORIZED BY US. UNPUBLISHED-ALL RIGHTS RESERVED UNDER THE COPYRIGHT LAWS.</small>		<input checked="" type="checkbox"/> YES <input type="checkbox"/> NO <b>CONTROLLED DRAWING</b>	<b>CLARKE</b> <i>Fire Protection Products, Inc.</i>
<small>MACHINE TOLERANCE</small> DECIMAL mm Inch X ± 1.5 XX ± 0.8 ± 0.06 XXX ± 0.3 ± 0.03 XXXX ± 0.25 ± 0.01 XXXXX ± 0.01 ± 0.001 ANGULAR: ± 0.5°	DRWN JAUGENSTEIN DATE 05AUG10 ENGR KKUNKLER	NAME <b>INSTALLATION DRAWING DIESEL FIRE PUMP JU4H-H T3 MECHANICAL</b>	PART NO. <b>D654</b>
<small>FABRICATION TOLERANCE</small> DECIMAL mm Inch X ± 3 ± 0.12 XX ± 1.5 ± 0.08 ANGULAR: ± 1.0°	MATERIAL REFERENCE EC1627	SCALE NTS UNITS MM [INCH]	REV D PAGE 1 OF 2

