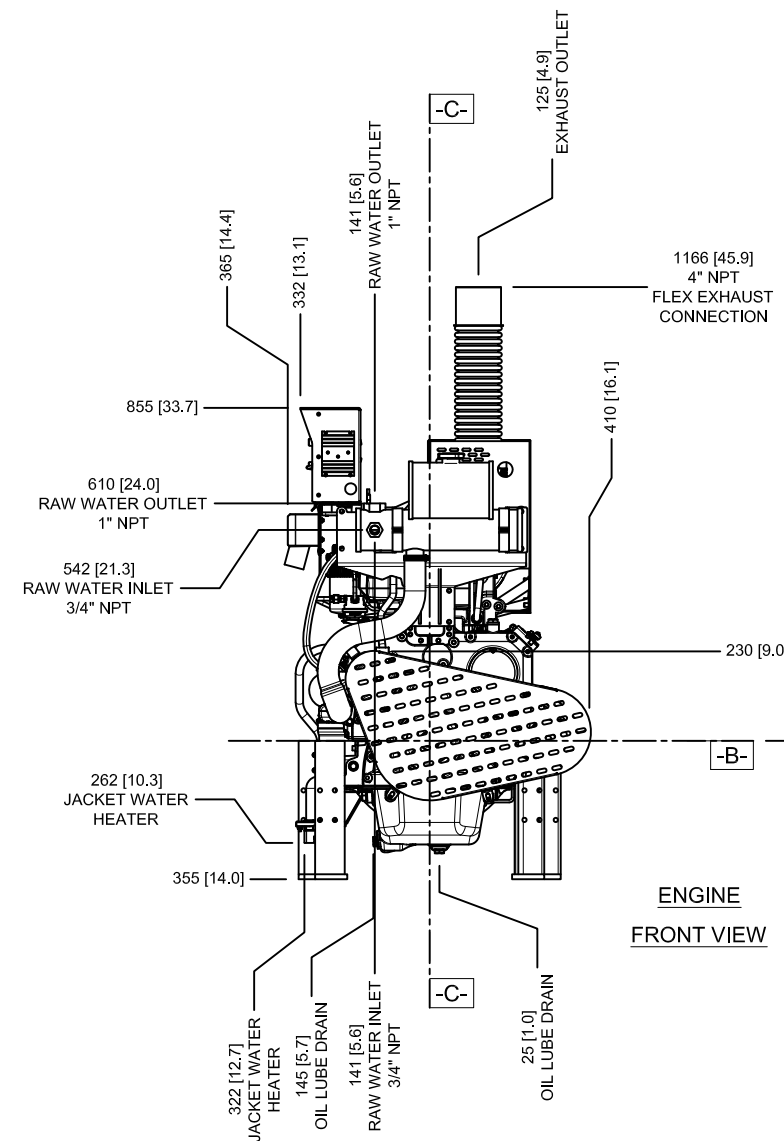
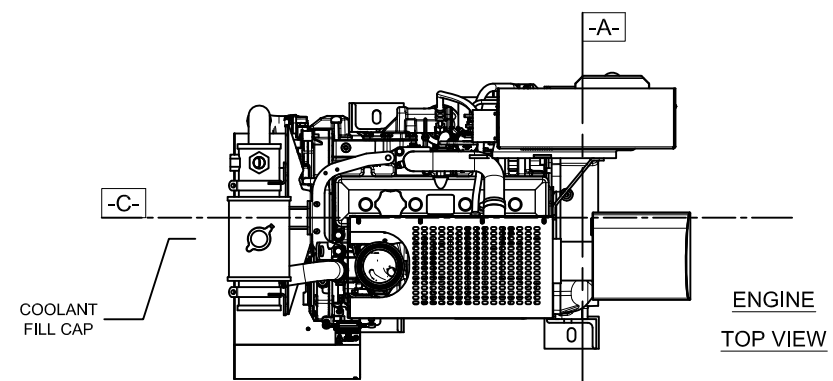


- DATUMS:**
- A- - MOUNTING FACE OF FLYWHEEL
  - B- - ENGINE CRANKSHAFT HORIZONTAL CENTERLINE
  - C- - ENGINE CRANKSHAFT VERTICAL CENTERLINE
  - - CENTER OF GRAVITY OF ENGINE
  - ↻ - CLOCKWISE ROTATION WHEN VIEWED FROM FRONT OF ENGINE

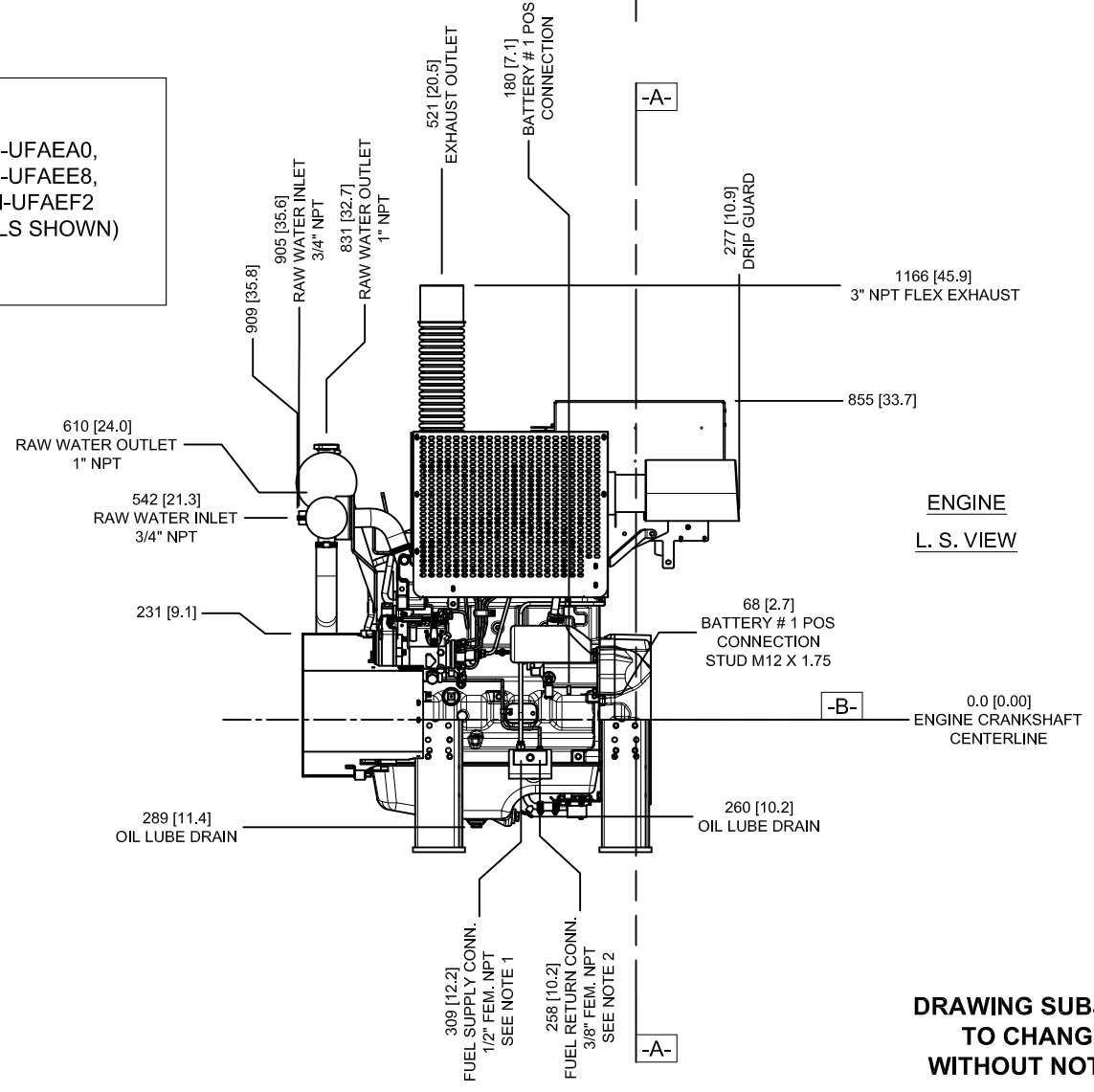
**CAUTION:**  
ALL PLUMBING MUST BE SUPPORTED AND/OR ISOLATED SO THAT NO WEIGHT OR STRESS IS APPLIED TO ANY ENGINE COMPONENT

**ATTENTION:**  
REFER TO THE SPECIFIC MODEL 'INSTALLATION AND OPERATION DATA' FOR INSTALLATION GUIDELINES

- NOTES:**
- FUEL SUPPLY PIPING FROM TANK TO ENGINE SHOULD BE 1/2" MINIMUM PIPE DIAMETER.
  - FUEL RETURN PIPING FROM ENGINE TO TANK SHOULD BE 3/8" MINIMUM PIPE DIAMETER.



"T"  
(TURBOCHARGED)  
JU4H-UFAEA0,  
JU4H-UFAEE8,  
JU4H-UFAEF2  
(MODELS SHOWN)



**DRAWING SUBJECT TO CHANGE WITHOUT NOTICE**  
**DO NOT SCALE**

REV	DESCRIPTION	ECN#	DWN	APVD	DATE
A	ISSUED ENGINEERING DRAWING	1627	JCA	<i>RJE</i>	05AUG10
B	ADDED RAW WATER IN/OUT SIZES	1627	MJD	<i>MJD</i>	28OCT10
C	3" NPT FLEX EXHAUST WAS 4" NPT	1627	JCA	<i>RJE</i>	23NOV10
D	CHANGED T3 REFERENCE TO IT4	1627	JCA	<i>RJE</i>	01FEB11

THIS DRAWING AND THE INFORMATION HEREON ARE OUR PROPERTY AND MAY BE USED BY OTHERS ONLY AS AUTHORIZED BY US. UNPUBLISHED—ALL RIGHTS RESERVED UNDER THE COPYRIGHT LAWS.		<input type="checkbox"/> YES <input checked="" type="checkbox"/> NO <b>CONTROLLED DRAWING</b>	<b>CLARKE</b> Fire Protection Products, Inc.
MACHINE TOLERANCE DECIMAL mm Inch .x ±.15 .xx ±.08 ±.06 .xxx ±.03 ±.03 .xxxx ±.025 ±.01 .xxxxx ±.01 ±.001 ANGULAR: ±.05°	DRWN JAUGENSTEIN DATE 05AUG10 ENGR KKUNKLER	NAME <b>INSTALLATION DRAWING          DIESEL FIRE PUMP          JU4H-T IT4 MECHANICAL</b>	PART NO. <b>D653</b>
MATERIAL REFERENCE EC1627	SCALE NTS UNITS MM [INCH]	PAGE 1 OF 2	REV D

8

7

6

5

4

3

2

1

H

G

F

E

D

C

B

A

H

G

F

E

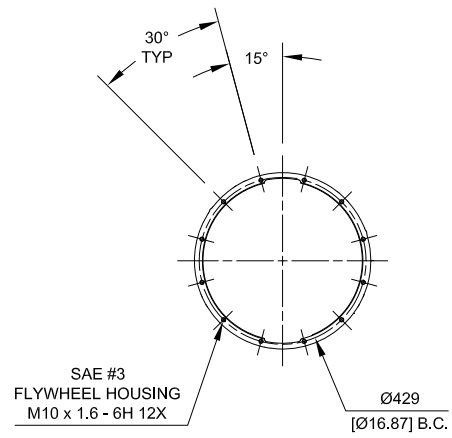
D

C

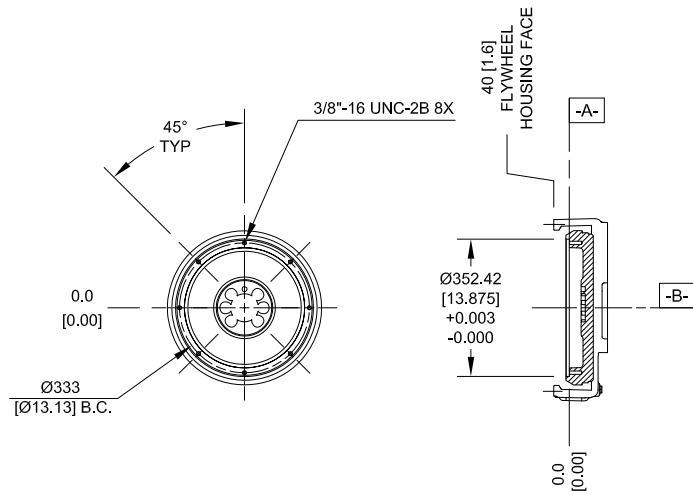
B

A

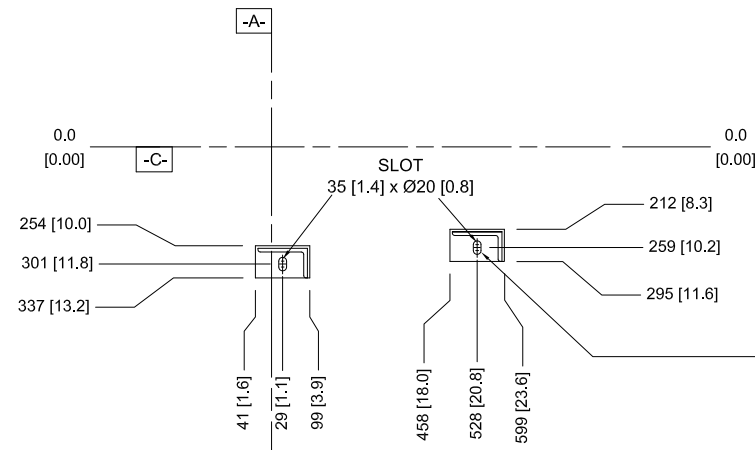
**FLYWHEEL HSG FACE  
DETAIL**



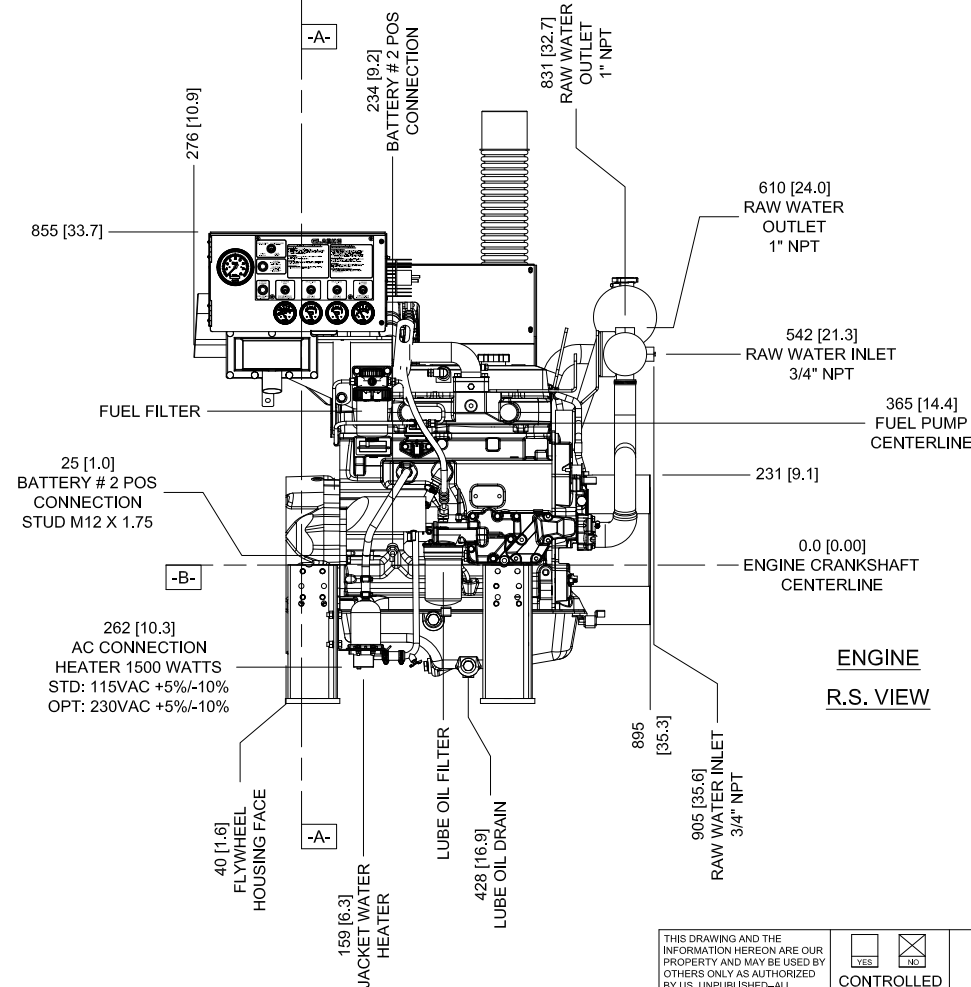
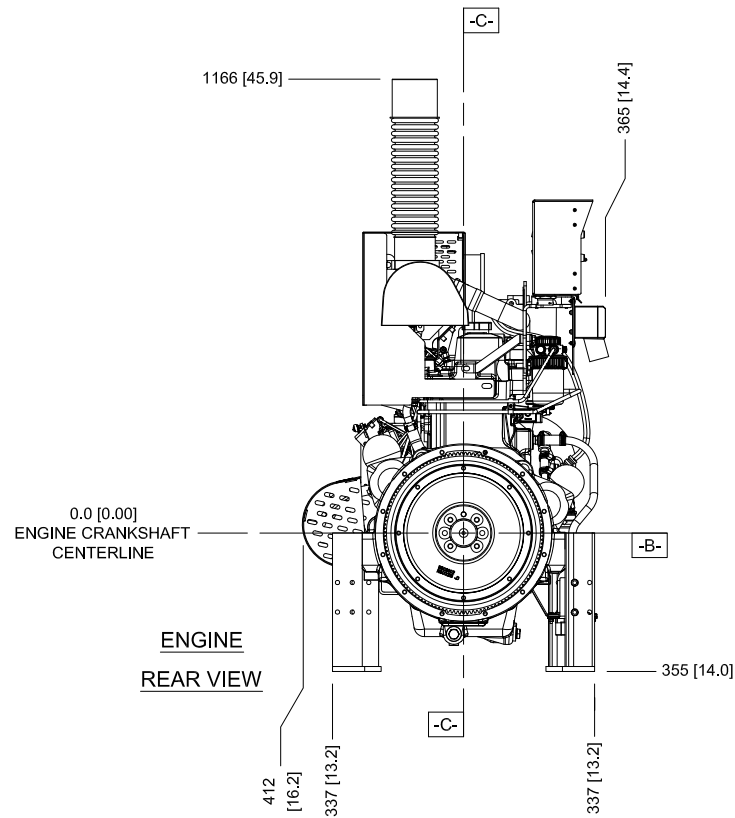
**DETAIL DATUM -A-  
BARE FLYWHEEL**



**ENGINE MOUNTING FEET  
SYMMETRICAL ABOUT CRANKSHAFT  
CENTERLINE: DATUM - C -**



USE 3/4" MINIMUM MOUNTING HARDWARE  
(GRADE 8, CLASS 10.9 RECOMMENDED)  
ALL FEET



FOR ENGINE SPECIFIC OPTIONS  
SEE [www.CLARKEFIRE.com](http://www.CLARKEFIRE.com)

THIS DRAWING AND THE INFORMATION HEREON ARE OUR PROPERTY AND MAY BE USED BY OTHERS ONLY AS AUTHORIZED BY US. UNPUBLISHED-ALL RIGHTS RESERVED UNDER THE COPYRIGHT LAWS.

MACHINE TOLERANCE	
DECIMAL	mm Inch
x	± 1.5
XX	± 0.8 ± 0.06
XXX	± 0.3 ± 0.03
XXXX	± 0.25 ± 0.01
XXXXX	± 0.01 ± 0.001
ANGULAR: ± 0.5°	
FABRICATION TOLERANCE	
DECIMAL	mm Inch
x	± 3
XX	± 1.5 ± 0.12
XXX	± 0.8 ± 0.08
ANGULAR: ± 1.0°	

**CLARKE**  
Fire Protection Products, Inc.

CONTROLLED DRAWING

DRWN	JAUENSTEIN	NAME	INSTALLATION DRAWING
DATE	05AUG10		DIESEL FIRE PUMP
ENGR	KKUNKLER		JU4H-T IT4 MECHANICAL
MATERIAL		PART NO.	D653
REFERENCE	EC1627	SCALE	NTS
		UNITS	MM [INCH]
		PAGE	2
		OF	2

REV D