

DATUMS

- A- MOUNTING FACE OF FLYWHEEL
- B- ENGINE CRANKSHAFT HORIZONTAL CENTERLINE
- C- ENGINE CRANKSHAFT VERTICAL CENTERLINE
- ⊙ CENTER OF GRAVITY OF ENGINE
- ↻ CLOCKWISE ROTATION WHEN VIEWED FROM FRONT OF ENGINE

CAUTION

ALL PLUMBING MUST BE SUPPORTED AND/OR ISOLATED SO THAT NO WEIGHT OR STRESS IS APPLIED TO ANY ENGINE COMPONENT

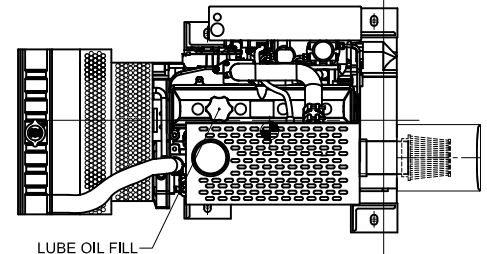
ATTENTION

REFER TO THE SPECIFIC MODEL "INSTALLATION AND OPERATION DATA" FOR INSTALLATION GUIDELINES

"T" (TURBOCHARGED) MODELS	JU4R-UF40, JU4R-UF49 JU4R-UF51, JU4R-UF53 SHOWN
"NA" (NATURALLY ASPIRATED) MODELS	JU4R-UF09, JU4R-UF11, JU4R-UF13, JU4R-UF19, JU4R-UF21, JU4R-UF23 IN PHANTOM
"**IT4" (**INTERIM TIER 4 TURBOCHARGED) MODELS	JU4R-UFAEA9 JU4R-UFAEE7 JU4R-UFAEF1 IN PHANTOM

VIEW FROM TOP OF ENGINE

DO NOT SCALE



LUBE OIL FILL

1135 [44.7]
1125 [44.3]
"T" MODELS
"NA" MODELS

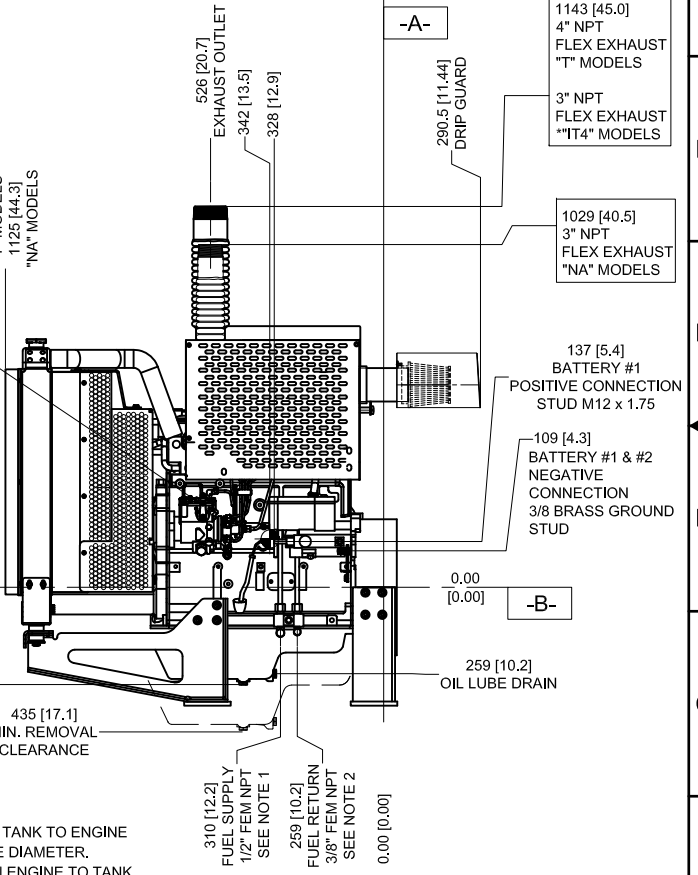
GOVERNOR SPEED ADJUSTING
CW - INCREASE RPM
CCW - DECREASE RPM

AIR FLOW

292 [11.5]
OIL LUBE DRAIN

435 [17.1]
MIN. REMOVAL CLEARANCE

VIEW FROM LEFT SIDE OF ENGINE



526 [20.7]
EXHAUST OUTLET

342 [13.5]

328 [12.9]

290.5 [11.44]
DRIP GUARD

1143 [45.0]
4" NPT FLEX EXHAUST "T" MODELS

3" NPT FLEX EXHAUST "**IT4" MODELS

1029 [40.5]
3" NPT FLEX EXHAUST "NA" MODELS

137 [5.4]
BATTERY #1 POSITIVE CONNECTION STUD M12 x 1.75

109 [4.3]
BATTERY #1 & #2 NEGATIVE CONNECTION 3/8" BRASS GROUND STUD

0.00 [0.00]

259 [10.2]
OIL LUBE DRAIN

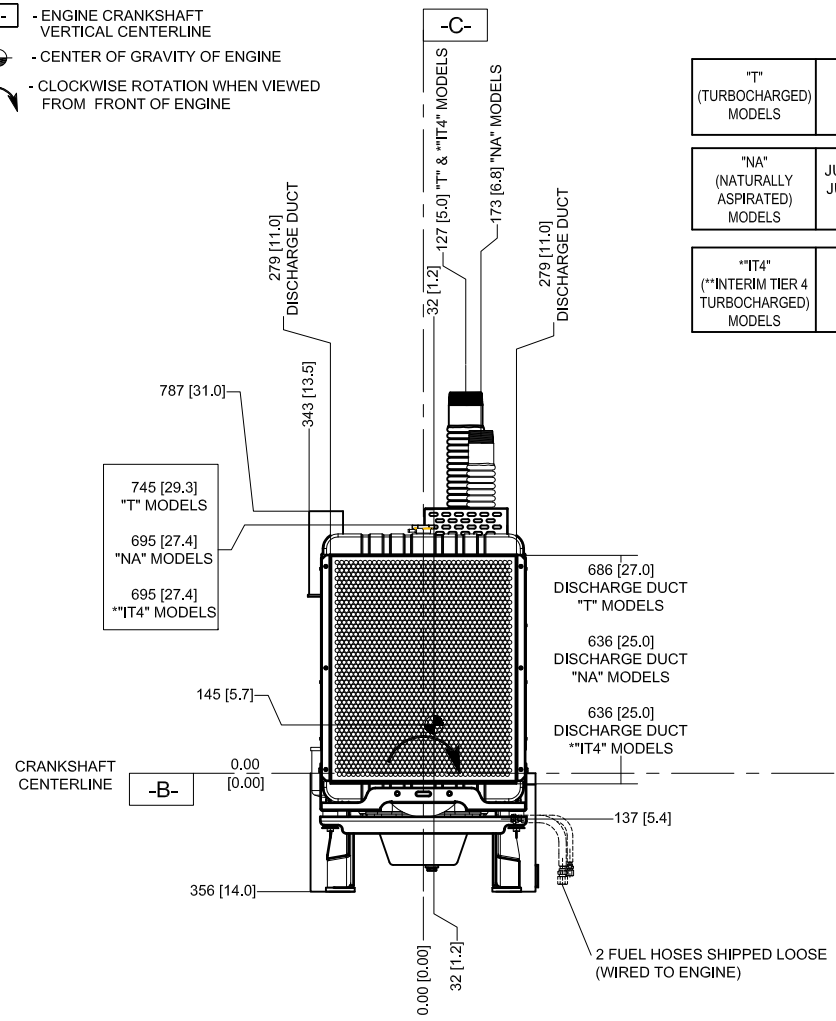
310 [12.2]
FUEL SUPPLY 1/2" FEM INPT SEE NOTE 1

259 [10.2]
FUEL RETURN 3/8" FEM INPT SEE NOTE 2

0.00 [0.00]

- NOTES:**
- FUEL SUPPLY PIPING FROM TANK TO ENGINE SHOULD BE 1/2" MINIMUM PIPE DIAMETER.
 - FUEL RETURN PIPING FROM ENGINE TO TANK SHOULD BE 3/8" MINIMUM PIPE DIAMETER.

VIEW FROM FRONT OF ENGINE



279 [11.0]
DISCHARGE DUCT

787 [31.0]

745 [29.3]
"T" MODELS

695 [27.4]
"NA" MODELS

695 [27.4]
**"IT4" MODELS

145 [5.7]

CRANKSHAFT CENTERLINE

0.00 [0.00]

356 [14.0]

32 [1.2]

127 [5.0]
"T" & "**IT4" MODELS

173 [6.8]
"NA" MODELS

279 [11.0]
DISCHARGE DUCT

686 [27.0]
DISCHARGE DUCT "T" MODELS

636 [25.0]
DISCHARGE DUCT "NA" MODELS

636 [25.0]
DISCHARGE DUCT "**IT4" MODELS

137 [5.4]

32 [1.2]

0.00 [0.00]

2 FUEL HOSES SHIPPED LOOSE (WIRED TO ENGINE)

DRAWING SUBJECT TO CHANGE WITHOUT NOTICE

REV	DESCRIPTION	ECN#	DWN	APVD	DATE
G	ADDED DRIVE DISK CALLOUT FOR SC41 DRIVESHAFT	1537	RJT	KRW	14SEP07
J	UPDATED ENGINE FEET MOUNTING DIMENSIONS	1408	RJT	KRW	13DEC07
L	CORRECTED LOCATION FUEL PUMP CENTERLINE	1622	KJM	KRW	13JAN09
M	ADDED DRIP GUARD	1201	KJM	KJK	12MAY09
N	ADDED JU4R-UFAEA9, -UFAEE7, AND -UFAEF1.	2127	JCA	KJK	08DEC10
N	NOTE WAS * "T3" AND ** "TIER 3"	2127	JCA	KJK	18JAN11

THIS DRAWING AND THE INFORMATION HEREON ARE OUR PROPERTY AND MAY BE USED BY OTHERS ONLY AS AUTHORIZED BY US.
UNPUBLISHED—ALL RIGHTS RESERVED UNDER THE COPYRIGHT LAWS.
MACHINE TOLERANCES:
FRACTIONAL DECIMAL ANGULAR
FRACTIONAL DECIMAL ANGULAR
FRACTIONAL DECIMAL ANGULAR
FRACTIONAL DECIMAL ANGULAR

CONTROLLED DRAWING	DATE: 12JAN09
DRWN: KJMYERS	ENGR: KKUNKLER
MATERIAL:	
SIMILAR TO: D540	

CLARKE
Fire Protection Products, Inc.

INSTALLATION DRAWING, FIRE PUMP ENGINE JU4R-UF MODELS

PART NO. **D548**

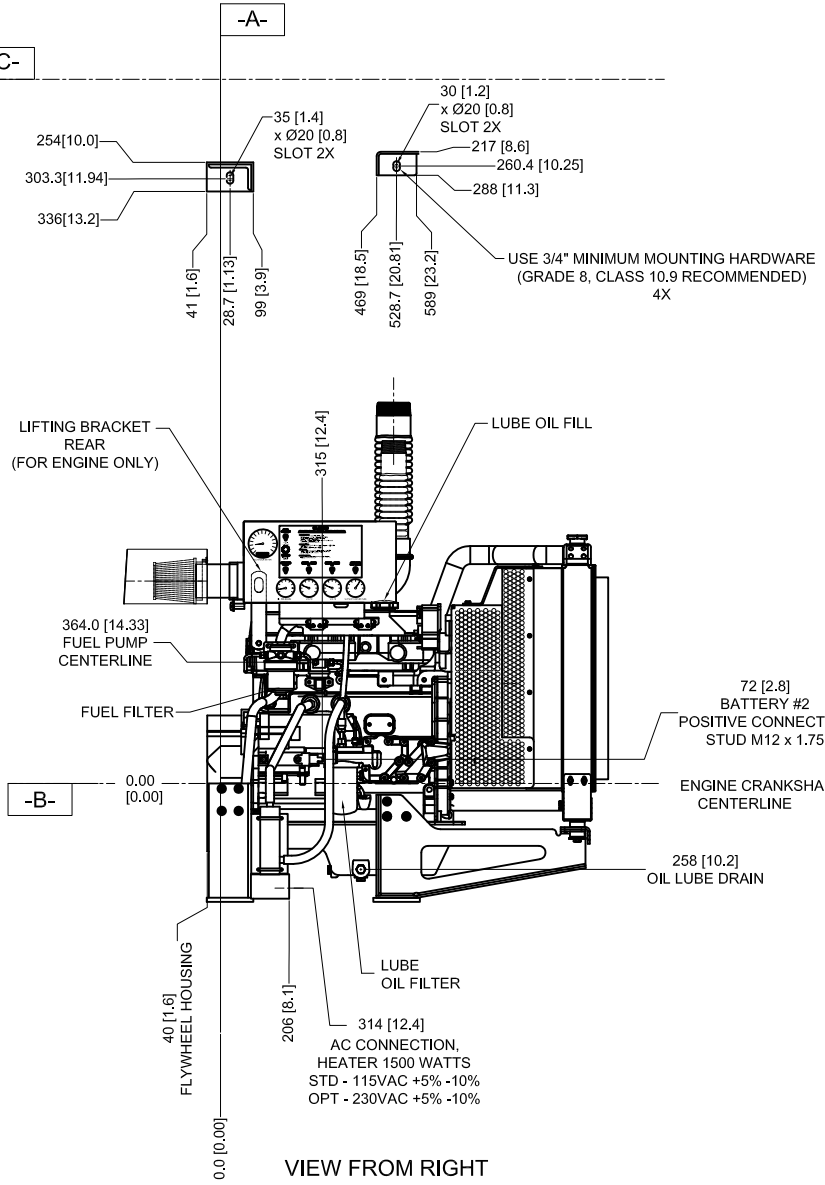
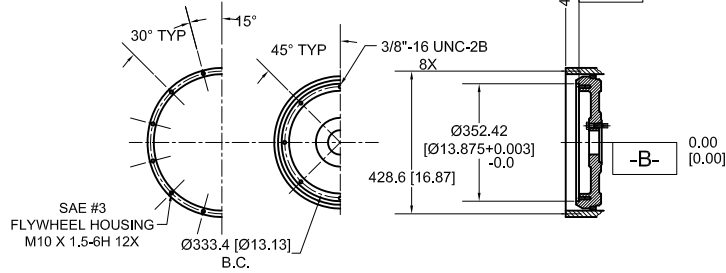
UNITS: MM [INCH]

PAGE OF 1 2

DO NOT SCALE

FOR ENGINE SPECIFIC OPTIONS
SEE www.CLARKEFIRE.com

DETAIL DATUM -A-
BARE FLYWHEEL
NO. TEETH = 129



**DRAWING SUBJECT
TO CHANGE
WITHOUT NOTICE**

VIEW FROM RIGHT
SIDE OF ENGINE

THIS DRAWING AND THE
INFORMATION HEREON ARE
OUR PROPERTY AND MAY
BE USED BY OTHERS ONLY
AS AUTHORIZED BY US.
UNPUBLISHED - ALL RIGHTS
RESERVED UNDER THE
COPYRIGHT LAWS.

CONTROLLED
DRAWING

CLARKE

Fire Protection Products, Inc.

MACHINE TOLERANCES		DATE	NAME
DESIGN	±.00	12JAN09	KJMYERS
MANUFACTURE	±.01	ENGR	KKUNKLER
FINISH	±.01	MATERIAL	
ANGULAR	±.01°	PART NO.	D548
DECIMAL	±.01	SIMILAR TO	D540
ANGULAR	±.01°	USED ON LAYOUT PART NO.	

INSTALLATION DRAWING, FIRE PUMP ENGINE JU4R-UF MODELS		REV	P
PAGE OF		2	2

