

8

7

6

5

4

3

2

1

DATUMS

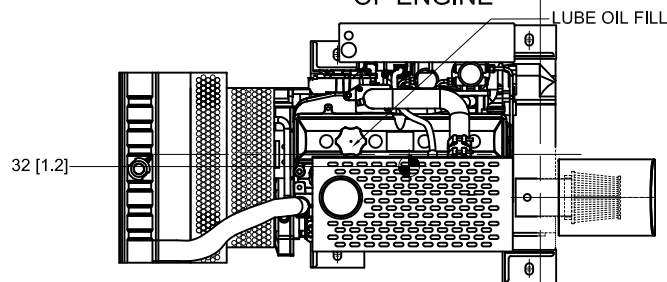
- A- - MOUNTING FACE OF FLYWHEEL
- B- - ENGINE CRANKSHAFT
- C- - ENGINE CRANKSHAFT VERTICAL CENTERLINE
- D- - PUMP OR RIGHT ANGLE GEAR SHAFT HORIZONTAL CENTERLINE
- E- - END OF PUMP OR RIGHT ANGLE GEAR SHAFT
- F- - REAR FACE OF ENGINE HALF FALK HUB
- G- - MOUNTING FACE OF UNIVERSAL DRIVE SHAFT ADAPTER
- CLOCKWISE ROTATION WHEN VIEWED FROM RADIATOR / FRONT OF ENGINE

**CAUTION**  
 ALL PLUMBING MUST BE SUPPORTED AND/OR ISOLATED SO THAT NO WEIGHT OR STRESS IS APPLIED TO ANY ENGINE COMPONENT

**ATTENTION**  
 REFER TO THE SPECIFIC MODEL "INSTALLATION AND OPERATION DATA" FOR INSTALLATION GUIDELINES

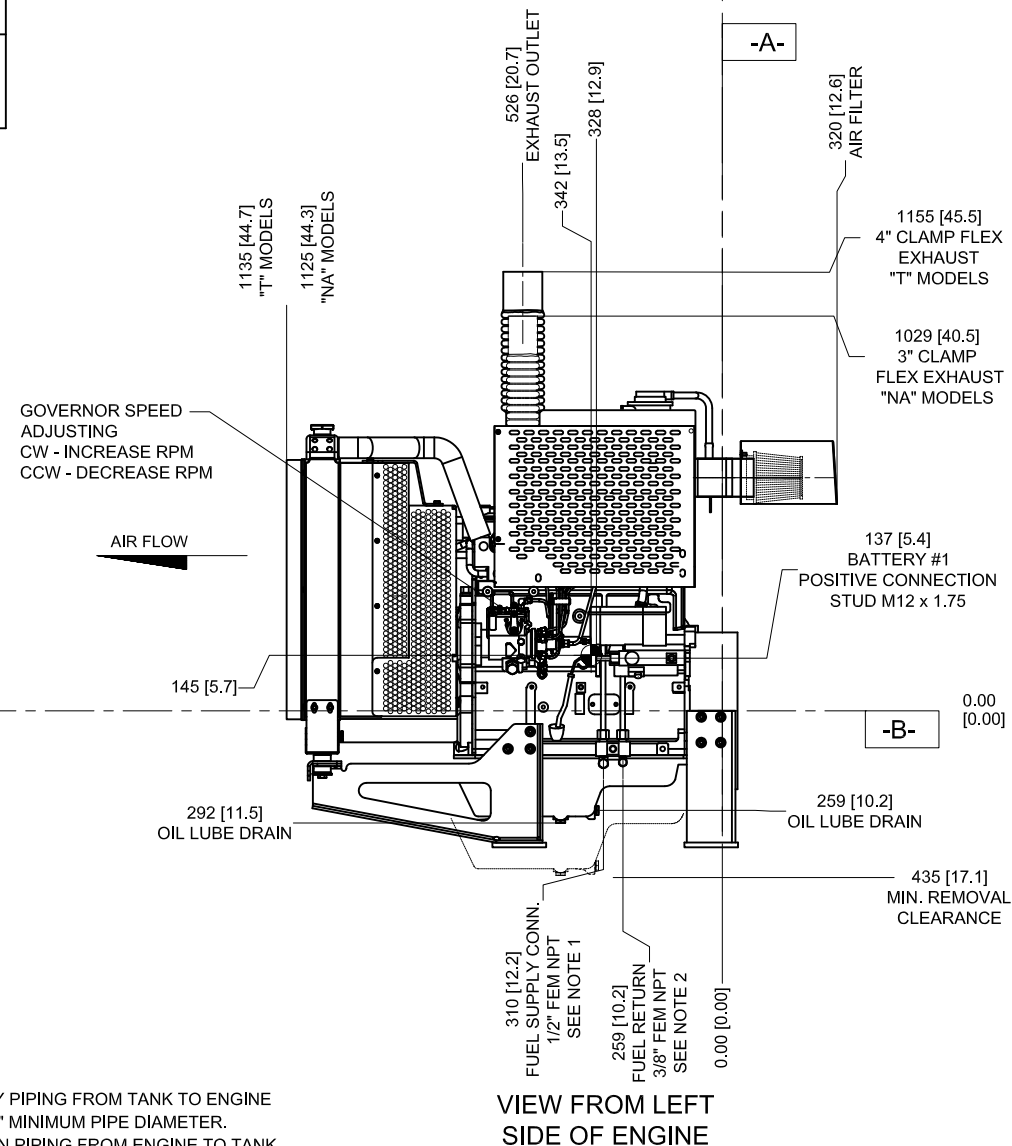
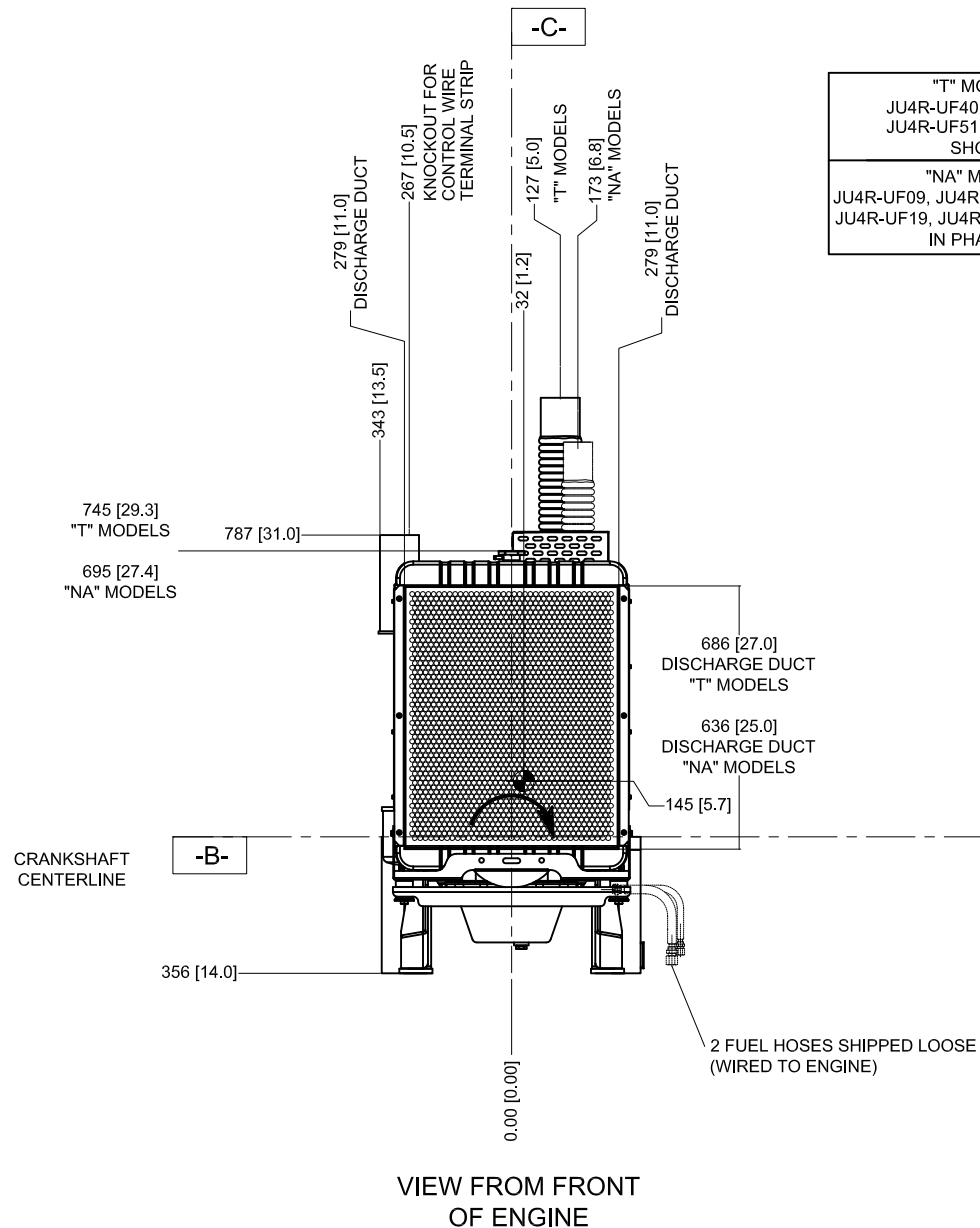
VIEW FROM TOP OF ENGINE

DO NOT SCALE



"T" MODELS  
 JU4R-UF40, JU4R-UF49  
 JU4R-UF51, JU4R-UF53  
 SHOWN

"NA" MODELS  
 JU4R-UF09, JU4R-UF11, JU4R-UF13,  
 JU4R-UF19, JU4R-UF21, JU4R-UF23  
 IN PHANTOM



NOTES:  
 1. FUEL SUPPLY PIPING FROM TANK TO ENGINE SHOULD BE 1/2" MINIMUM PIPE DIAMETER.  
 2. FUEL RETURN PIPING FROM ENGINE TO TANK SHOULD BE 3/8" MINIMUM PIPE DIAMETER.

**DRAWING SUBJECT TO CHANGE WITHOUT NOTICE**

REV	DESCRIPTION	ECN#	DWN	APVD	DATE
A	ISSUED ENGINEERING DRAWING	1157	MWL	KRW	20MAR07
B	UPDATED ENGINE FEET MOUNTING DIMENSIONS	1408	RJT	KRW	13DEC07
C	CORRECTED LOCATION FUEL PUMP CENTERLINE	1622	KJM	KRW	13JAN09
D	UPDATED THE AIR FILTER DRIP GUARD	1622	DGP	ASC	19MAY11

THIS DRAWING AND THE INFORMATION HEREON ARE OUR PROPERTY AND MAY BE USED BY OTHERS ONLY AS AUTHORIZED BY US. UNPUBLISHED-ALL RIGHTS RESERVED UNDER THE COPYRIGHT LAWS.

**CLARKE**  
 Fire Protection Products, Inc.

CONTROLLED DRAWING

DRWN: DATE: 20MAR07

ENGR: K.J.KUNKLER

MATERIAL:

MACHINE TOLERANCES:  
 DECIMAL mm Inch  
 X. ±1.5  
 X.X ±0.8 ±0.06  
 X.XX ±0.3 ±0.03  
 ANGULAR: ±0.5°

SIMILAR TO: D540

INSTALLATION DRAWING, FIRE PUMP ENGINE JU4R-UF MODELS

PART NO. UD139

SCALE: NTS UNITS: MM [INCH]

PAGE 1 OF 2

8

7

6

5

4

3

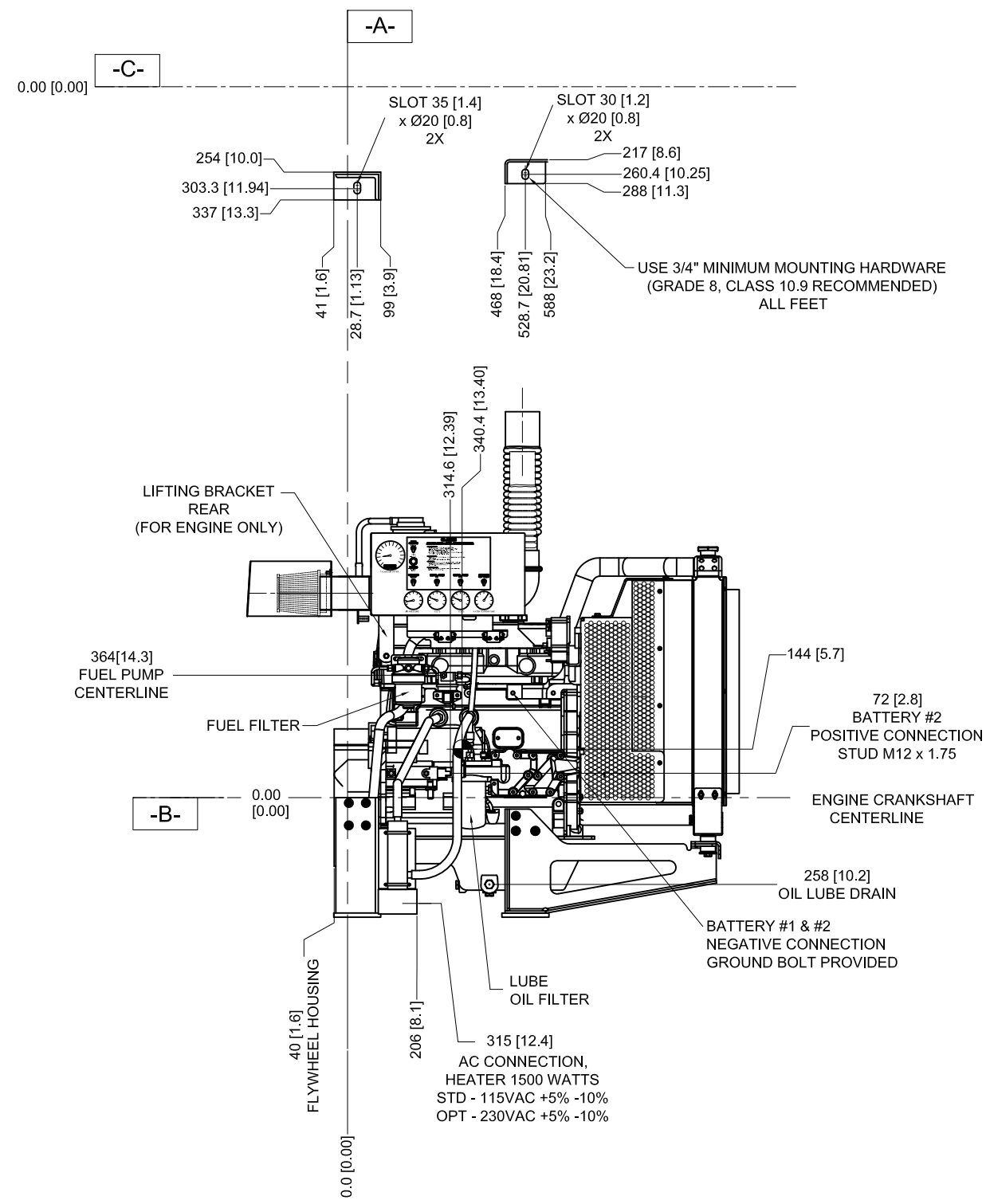
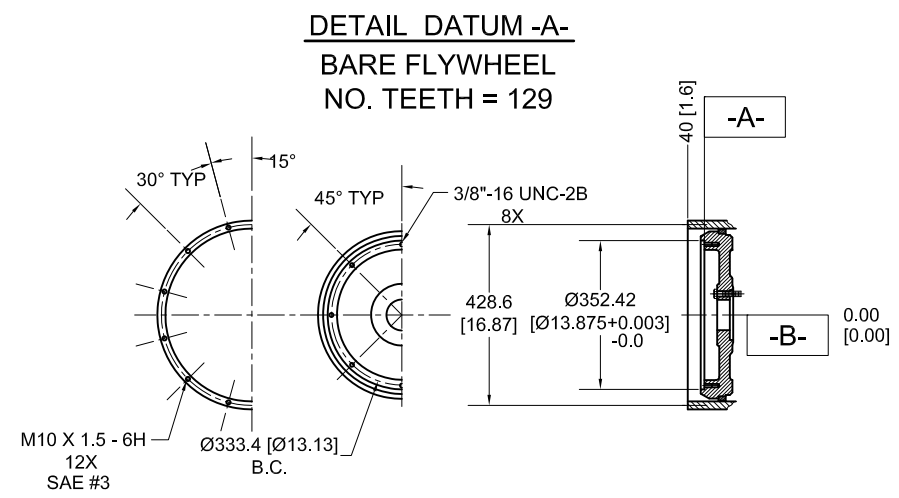
2

1

8 7 6 5 4 3 2 1

H  
G  
F  
E  
D  
C  
B  
A

H  
G  
F  
E  
D  
C  
B  
A



**DRAWING SUBJECT TO CHANGE WITHOUT NOTICE**

THIS DRAWING AND THE INFORMATION HEREON ARE OUR PROPERTY AND MAY BE USED BY OTHERS ONLY AS AUTHORIZED BY US. UNPUBLISHED-ALL RIGHTS RESERVED UNDER THE COPYRIGHT LAWS.

**CLARKE**  
Fire Protection Products, Inc.

**CONTROLLED DRAWING**

DRWN: MWLEMING  
DATE: 20MAR07  
ENGR: K.J.KUNKLER

NAME: **INSTALLATION DRAWING, FIRE PUMP ENGINE JU4R-UF MODELS**

MACHINE TOLERANCES:  
DECIMAL mm Inch  
X. ±1.5  
X.X ±0.8 ±0.06  
X.XX ±0.3 ±0.03

ANGULAR: ±0.5°

SIMILAR TO: **D540**

MATERIAL:

PART NO.: **UD139** REV: **D**

SCALE: NTS UNITS: MM [INCH]

PAGE 2 OF 2

8 7 6 5 4 3 2 1