

6 5 4 3 2 1

H G F E D C B A

DATUMS

- A- - MOUNTING FACE OF FLYWHEEL
- B- - ENGINE CRANKSHAFT HORIZONTAL CENTERLINE
- C- - ENGINE CRANKSHAFT VERTICAL CENTERLINE
- CENTER OF GRAVITY OF ENGINE
- CLOCKWISE ROTATION WHEN VIEWED FROM FRONT OF ENGINE

CAUTION

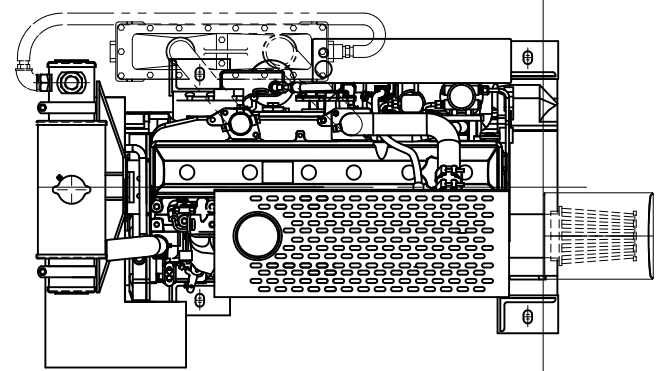
ALL PLUMBING MUST BE SUPPORTED AND/OR ISOLATED SO THAT NO WEIGHT OR STRESS IS APPLIED TO ANY ENGINE COMPONENT

ATTENTION

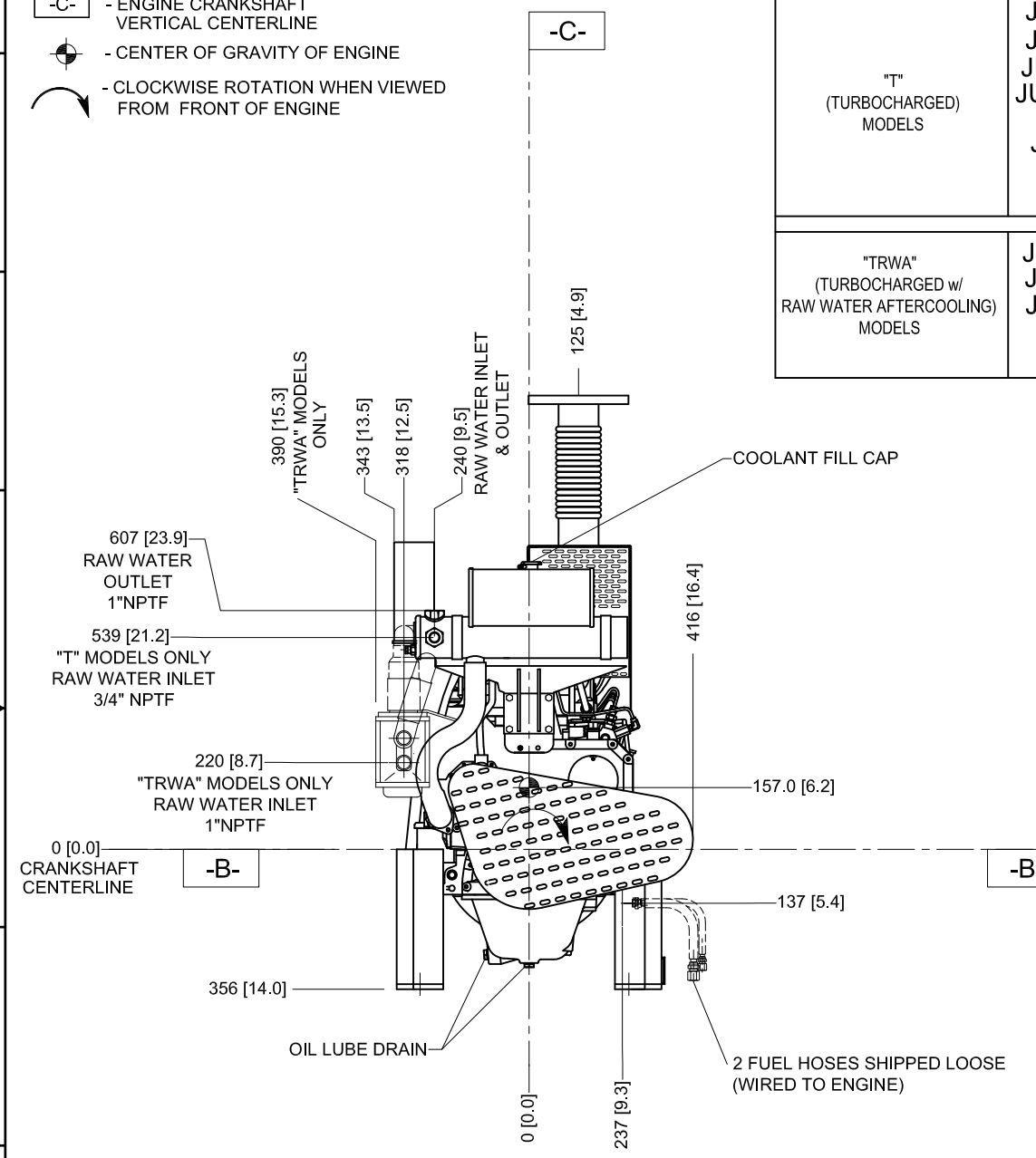
REFER TO THE SPECIFIC MODEL "INSTALLATION AND OPERATION DATA" FOR INSTALLATION GUIDELINES

"T" (TURBOCHARGED) MODELS	JU6H-UF30,-UF32,-UF34 JU6H-UF50,-UF52,-UF54 JU6H-UF58,-UFD0,-UFD2 JU6H-UF68,-UFM0,-UFM2 JU6H-UFM8 JU6H-UFABL8,-UFABL0 JU6H-UFABL2 SHOWN
"TRWA" (TURBOCHARGED w/ RAW WATER AFTERCOOLING) MODELS	JU6H-UFAAQ8,-UFAARG JU6H-UFAAPG,-UFAAS0 JU6H-UF60,-UF62,-UF68 JU6H-UFAB76,-UF84 IN PHANTOM

VIEW FROM TOP OF ENGINE

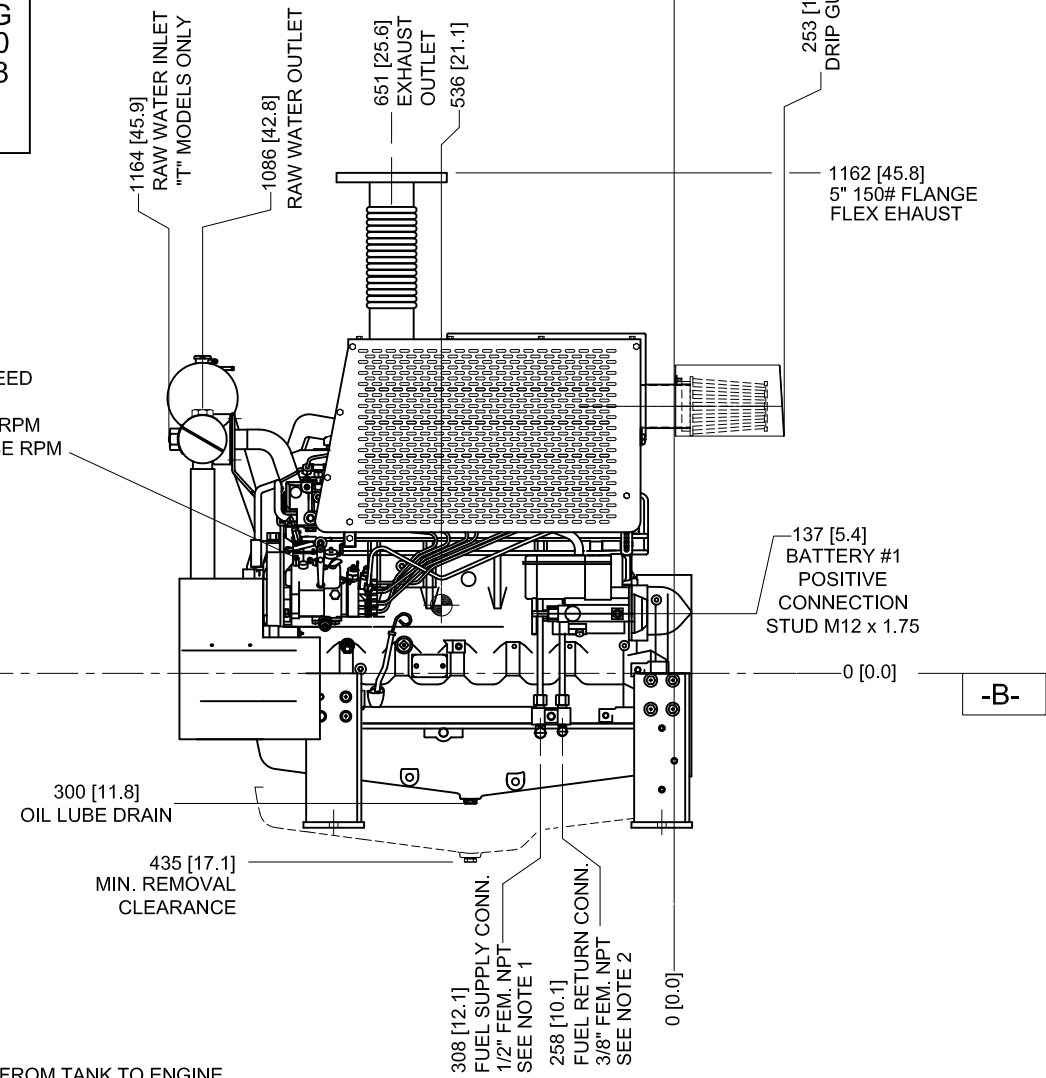


DO NOT SCALE



VIEW FROM FRONT OF ENGINE

GOVERNOR SPEED ADJUSTING
CW- INCREASE RPM
CCW- DECREASE RPM



VIEW FROM LEFT SIDE OF ENGINE

- NOTES:**
- FUEL SUPPLY PIPING FROM TANK TO ENGINE SHOULD BE 1/2" MINIMUM PIPE DIAMETER.
 - FUEL RETURN PIPING FROM ENGINE TO TANK SHOULD BE 3/8" MINIMUM PIPE DIAMETER.

DRAWING SUBJECT TO CHANGE WITHOUT NOTICE

REV	DESCRIPTION	ECN#	DWN	APVD	DATE
P	ISSUED ENGINEERING DRAWING	1226	MAL	KRW	23MAY08
Q	ADDED ENGINE MODELS UFABL8, UFABL0, UFABL2	1226	MAL	KRW	10SEP08
R	CORRECTED LOCATION FUEL PUMP CENTERLINE	1622	KJM	KRW	12JAN09
S	ADDED DRIP GUARD, ADDED AAQ8, AARG MODELS	1201	MAL	KJK	11MAY09
T	REVISED ENGINE FOOT MOUNTING HOLE LOCATIONS PAGE 2	1901	JCA	ASC	28JUL10
U	ADDED ENGINE MODELS -UFAAPG & -UFAASO	2159	JCA	KJK	08DEC10

THIS DRAWING AND THE INFORMATION HEREON ARE OUR PROPERTY AND MAY BE USED BY OTHERS ONLY AS AUTHORIZED BY US. UNPUBLISHED—ALL RIGHTS RESERVED UNDER THE COPYRIGHT LAWS.

MACHINE TOLERANCES
 DECIMAL .001 .002 .003 .005 .010
 X.XX ±1.5 ±0.06
 X.XXX ±1.5 ±0.03
 X.XXXX ±1.5 ±0.01
 X.XXXXX ±1.5 ±0.01
 ANGULAR: ±0.5°

FABRICATION TOLERANCES
 DECIMAL .001 .002 .003 .005 .010
 X.X ±1.5 ±0.12
 X.XX ±1.5 ±0.06
 ANGULAR: ±1.0°

CLARKE
Fire Protection Products, Inc.

CONTROLLED DRAWING

DRWN MALAUER
ENGR KRWAULIGMAN

DATE 23APR08

MATERIAL

SIMILAR TO D506

USED ON LAYOUT PART NO.

UNITS MM [INCH]

PAGE 1 OF 2

INSTALLATION DRAWING, FIRE PUMP ENGINE JU6H-UF MODELS

PART NO. D536

REV U

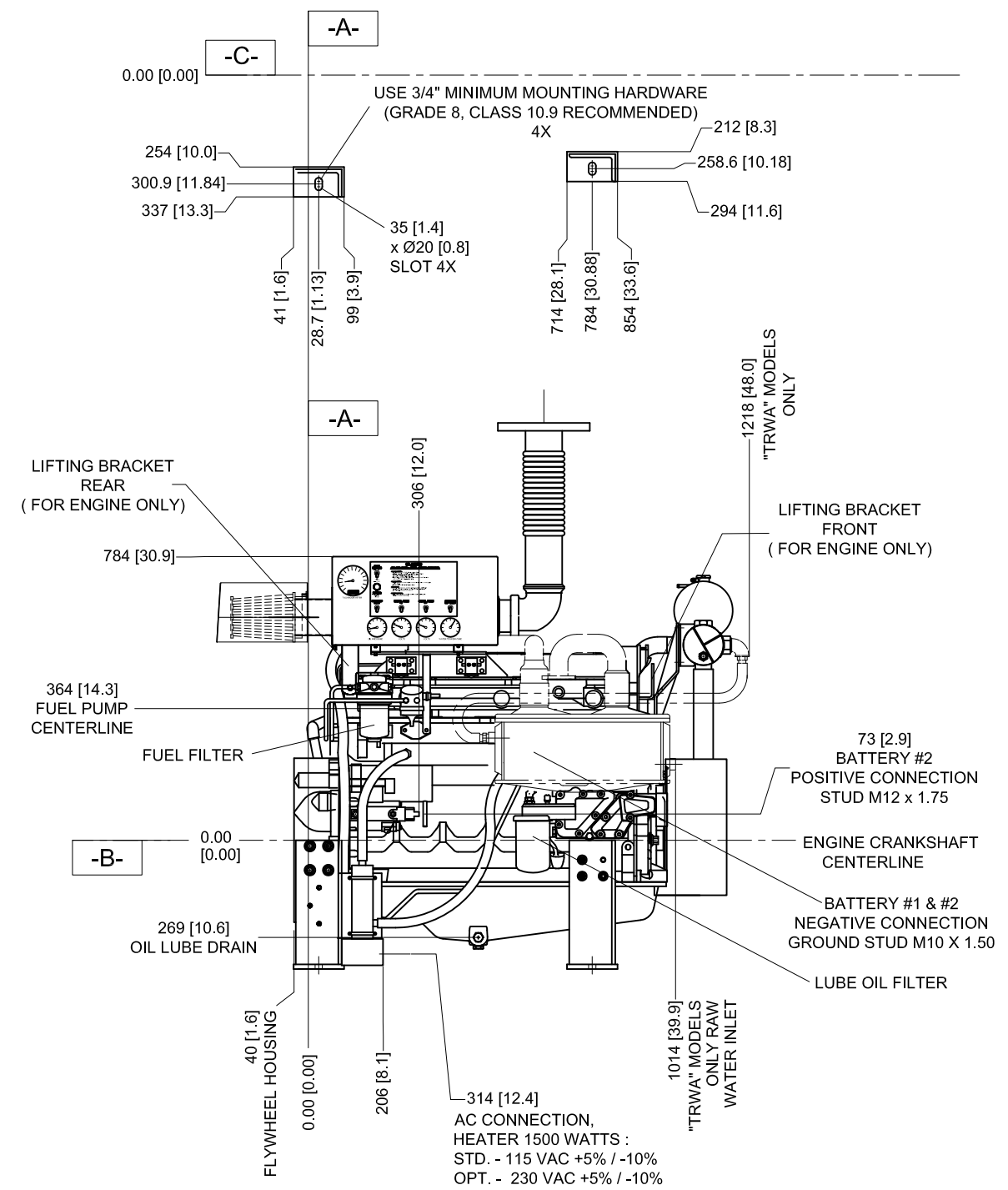
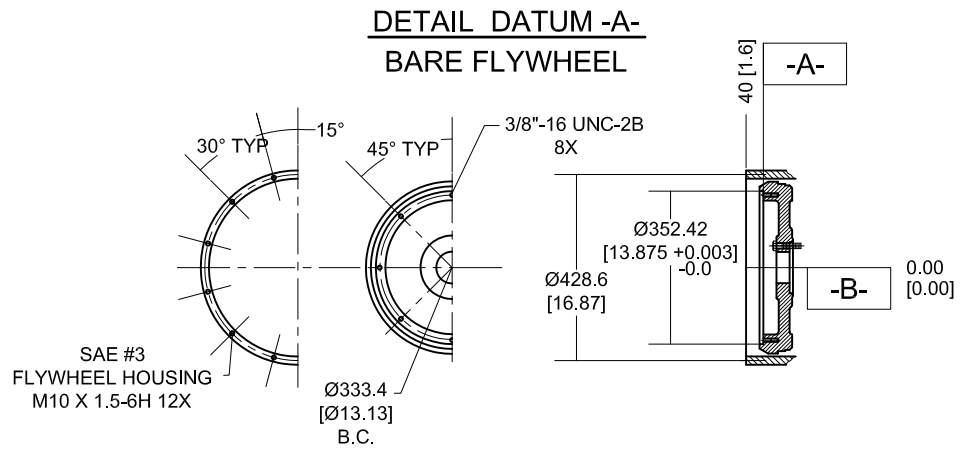
6 5 4 3 2 1

A B C D E F G H

6 5 4 3 2 1

DO NOT SCALE

FOR ENGINE SPECIFIC OPTIONS
SEE www.CLARKEFIRE.com



**DRAWING SUBJECT
TO CHANGE
WITHOUT NOTICE**

VIEW FROM RIGHT
SIDE OF ENGINE

<small>THIS DRAWING AND THE INFORMATION HEREON ARE OUR PROPERTY AND MAY BE USED BY OTHERS ONLY AS AUTHORIZED BY US. UNPUBLISHED—ALL RIGHTS RESERVED UNDER THE COPYRIGHT LAWS.</small>		<input checked="" type="checkbox"/> CONTROLLED DRAWING		CLARKE Fire Protection Products, Inc.																																	
DRWN MALAUER ENGR KRWAULIGMAN		DATE 23APR08 MATERIAL		NAME INSTALLATION DRAWING, FIRE PUMP ENGINE JU6H-UF MODELS																																	
<table border="1"> <thead> <tr> <th colspan="2">MACHINE TOLERANCES</th> </tr> <tr> <th>DECIMAL</th> <th>mm</th> </tr> </thead> <tbody> <tr> <td>X</td> <td>±1.5</td> </tr> <tr> <td>X.X</td> <td>±0.6</td> </tr> <tr> <td>X.XX</td> <td>±0.3</td> </tr> <tr> <td>X.XXX</td> <td>±0.25</td> </tr> <tr> <td>X.XXXX</td> <td>±0.1</td> </tr> <tr> <td>X.XXXXX</td> <td>±0.01</td> </tr> <tr> <th colspan="2">FABRICATION TOLERANCES</th> </tr> <tr> <th>DECIMAL</th> <th>mm</th> </tr> <tr> <td>X</td> <td>±3</td> </tr> <tr> <td>X.X</td> <td>±1.5</td> </tr> <tr> <td>X.XX</td> <td>±1.2</td> </tr> <tr> <td>X.XXX</td> <td>±1.5</td> </tr> <tr> <td>X.XXXX</td> <td>±0.6</td> </tr> <tr> <td colspan="2">ANGULAR: ±1.0°</td> </tr> </tbody> </table>		MACHINE TOLERANCES		DECIMAL	mm	X	±1.5	X.X	±0.6	X.XX	±0.3	X.XXX	±0.25	X.XXXX	±0.1	X.XXXXX	±0.01	FABRICATION TOLERANCES		DECIMAL	mm	X	±3	X.X	±1.5	X.XX	±1.2	X.XXX	±1.5	X.XXXX	±0.6	ANGULAR: ±1.0°		PART NO. D536 REV U		SIMILAR TO USED ON LAYOUT PART NO.	
MACHINE TOLERANCES																																					
DECIMAL	mm																																				
X	±1.5																																				
X.X	±0.6																																				
X.XX	±0.3																																				
X.XXX	±0.25																																				
X.XXXX	±0.1																																				
X.XXXXX	±0.01																																				
FABRICATION TOLERANCES																																					
DECIMAL	mm																																				
X	±3																																				
X.X	±1.5																																				
X.XX	±1.2																																				
X.XXX	±1.5																																				
X.XXXX	±0.6																																				
ANGULAR: ±1.0°																																					
		UNITS MM [INCH]		PAGE OF 2 2																																	

6 5 4 3 2 1