

8 7 6 5 4 3 2 1

**DATUMS**

- A- - MOUNTING FACE OF FLYWHEEL
- B- - ENGINE CRANKSHAFT HORIZONTAL CENTERLINE
- C- - PUMP SHAFT AND CRANKSHAFT VERTICAL CENTERLINE
- CENTER OF GRAVITY OF ENGINE
- CLOCKWISE ROTATION WHEN VIEWED FROM RADIATOR / FRONT OF ENGINE

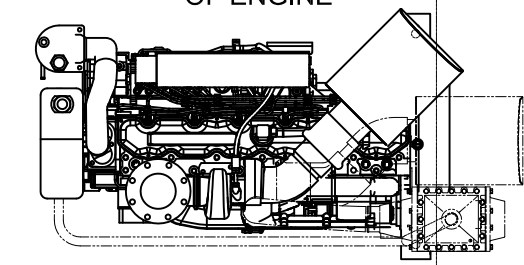
**CAUTION**

ALL PLUMBING MUST BE SUPPORTED AND/OR ISOLATED SO THAT NO WEIGHT OR STRESS IS APPLIED TO ANY ENGINE COMPONENT

**ATTENTION**

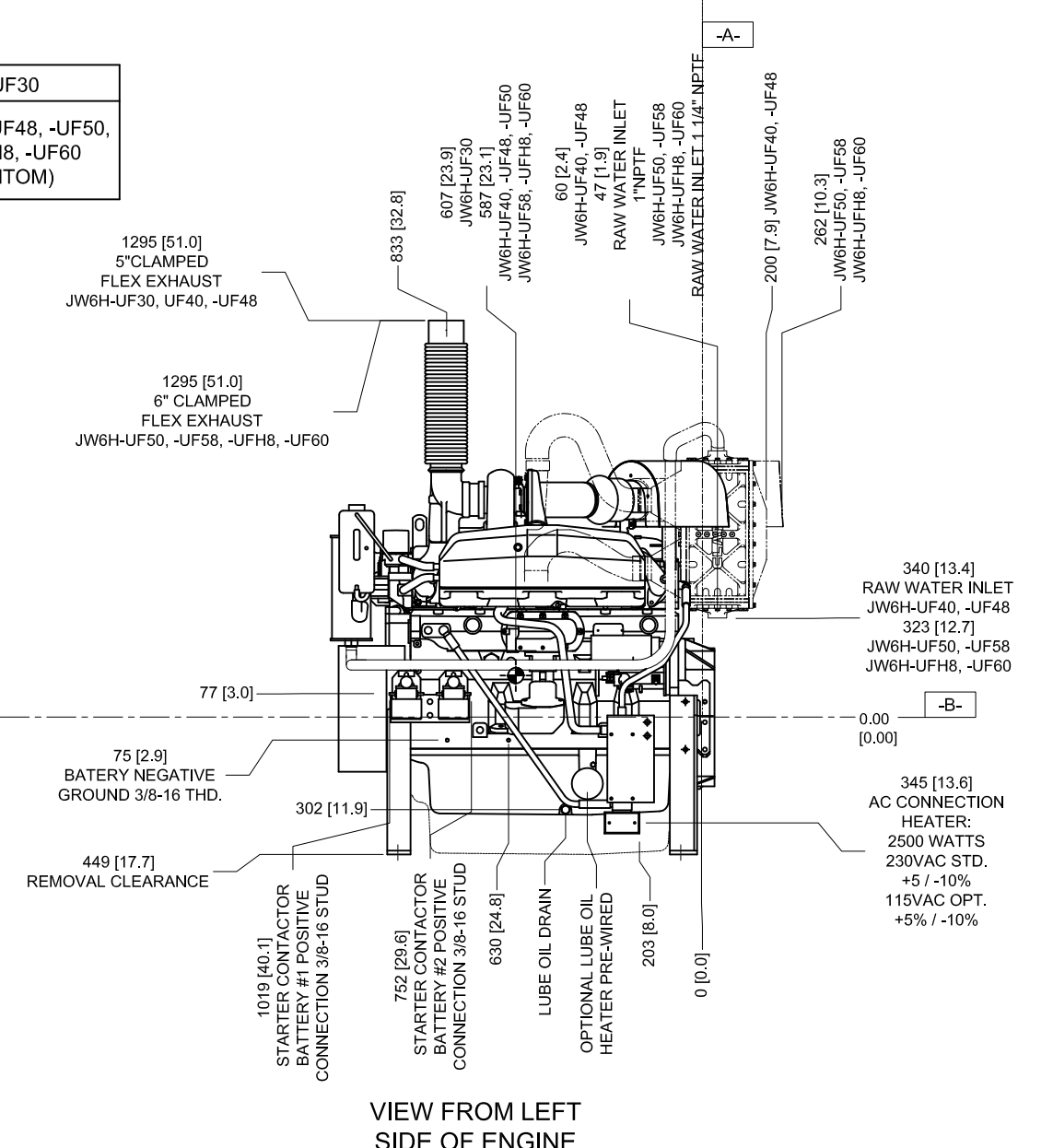
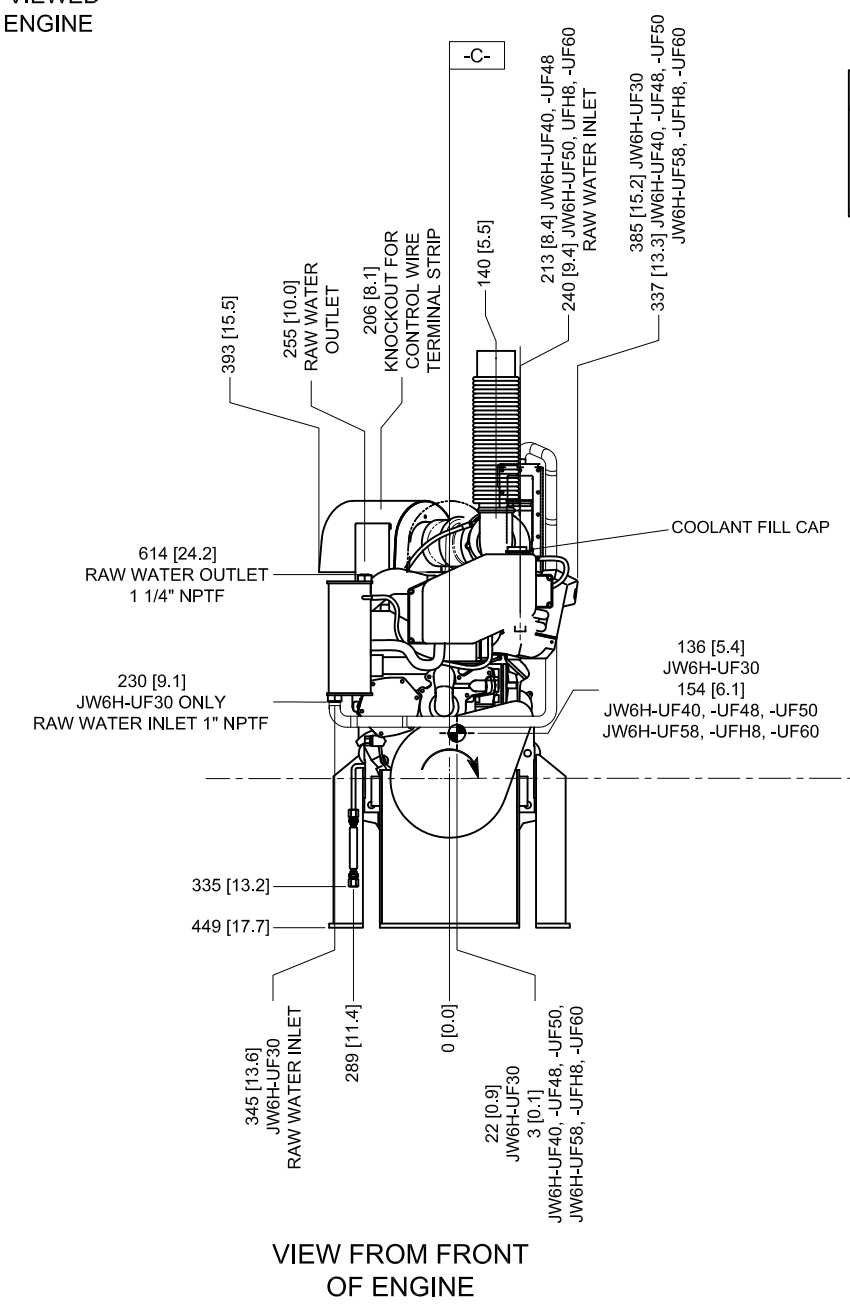
REFER TO THE SPECIFIC MODEL "INSTALLATION AND OPERATION DATA" FOR INSTALLATION GUIDELINES

**VIEW FROM TOP OF ENGINE**



**DO NOT SCALE**

**JW6H-UF30**  
**JW6H-UF40, -UF48, -UF50, -UF58, -UFH8, -UF60**  
 (IN PHANTOM)



**VIEW FROM FRONT OF ENGINE**

**VIEW FROM LEFT SIDE OF ENGINE**

**DRAWING SUBJECT TO CHANGE WITHOUT NOTICE**

REV	REVISION	ECN#	DRWN	APVD	DATE
F	UPDATED DRIP GUARD	1201	ASC	KPW	31AUG09
G	UPDATED ENGINE MODELS	1806	RJT	KPW	13JAN10
H	GENERAL CORRECTIONS	1806	ASC	KPW	17FEB10
J	DATUM A WAS END OF PUMP SHAFT	1965	ASC	KPW	03MAY10
K	JW6H-UF50,58,H8,60 RAW WATER INLET WAS 1"NPT	2555	DKP	ASC	17FEB12

THIS DRAWING AND THE INFORMATION HEREON ARE OUR PROPERTY AND MAY BE USED BY OTHERS ONLY AS AUTHORIZED BY US. UNPUBLISHED—ALL RIGHTS RESERVED UNDER THE COPYRIGHT LAWS.

**CONTROLLED DRAWING**

**CLARKE**  
 Fire Protection Products, Inc.

DRWN: ACRISTOFARO  
 DATE: 22MAR07  
 ENGR: KJKUNKLER

MATERIAL

NAME: INSTALLATION DRAWING, FIRE PUMP ENGINE JW6H-UF MODELS

PART NO.: UD-140  
 REV: K

SCALE: NTS  
 UNITS: INCH [MM]  
 PAGE OF: 1 2

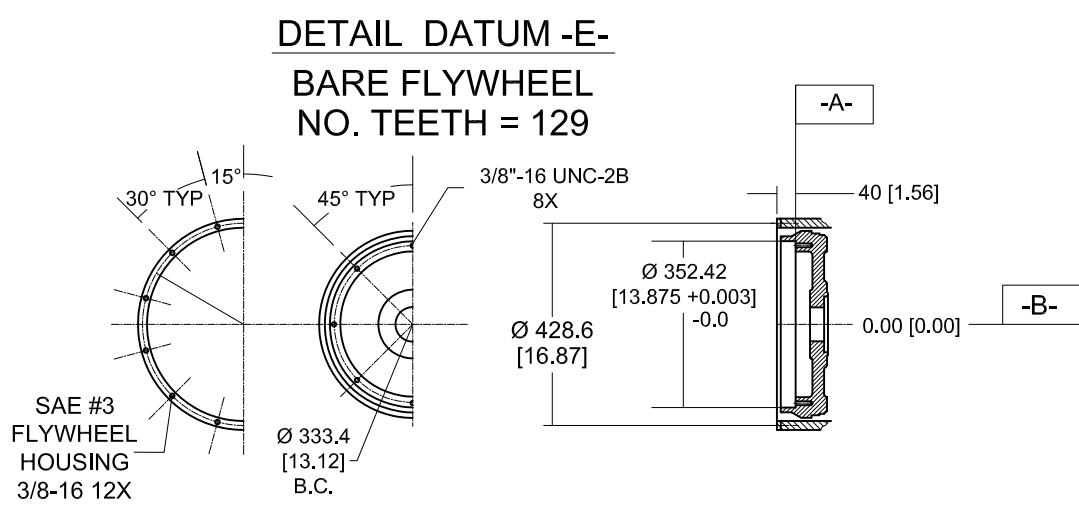
8 7 6 5 4 3 2 1

8 7 6 5 4 3 2 1

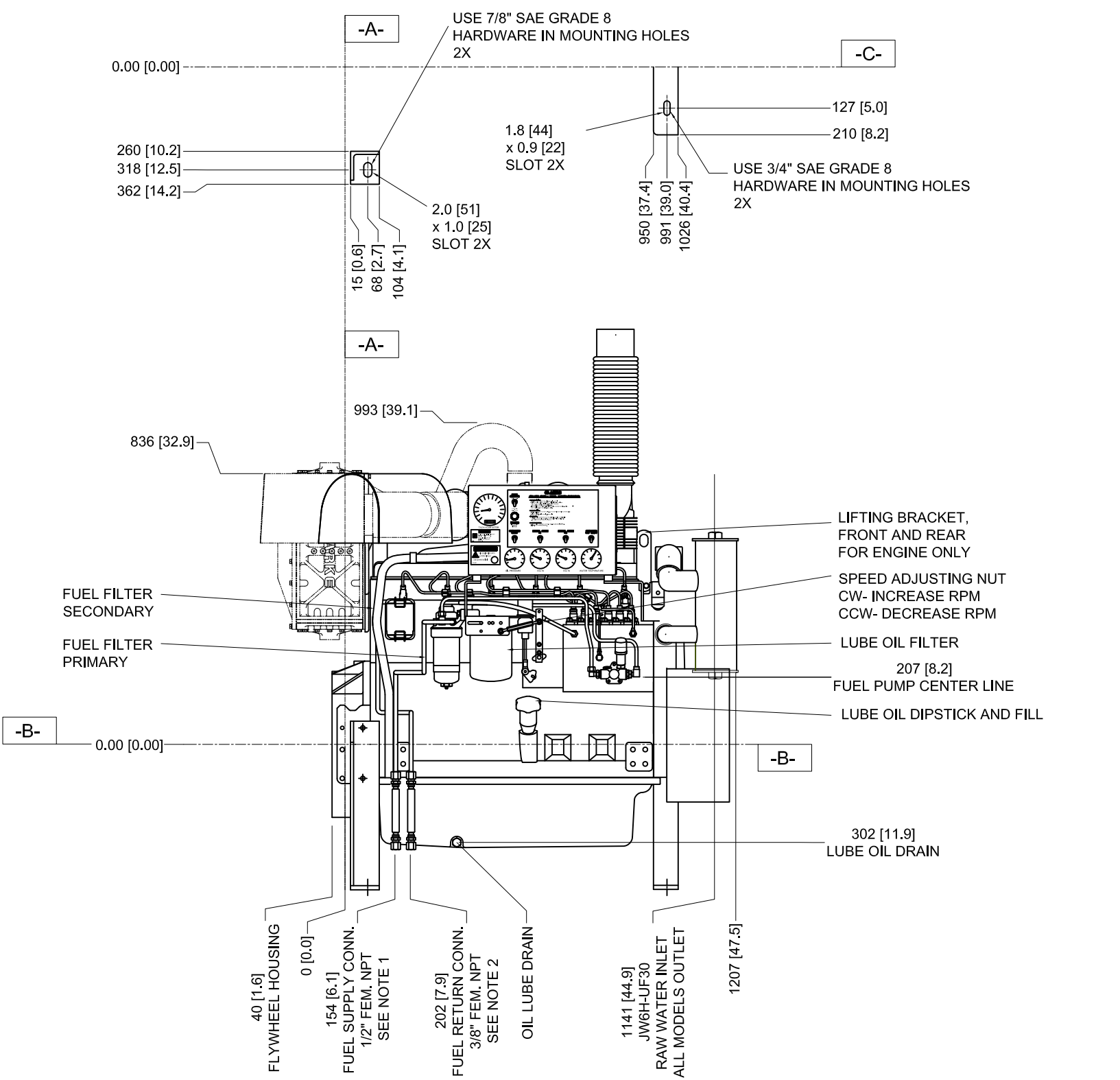
H  
G  
F  
E  
D  
C  
B  
A

H  
G  
F  
E  
D  
C  
B  
A

FOR ENGINE SPECIFIC OPTIONS  
SEE [www.CLARKEFIRE.com](http://www.CLARKEFIRE.com)



JW6H-UF30 SHOWN  
JW6H-UF40,-UF50,-UFH8  
JW6H-UF60,-UFAAM8,-UFAA80  
IN PHANTOM



**DRAWING SUBJECT TO CHANGE WITHOUT NOTICE**

**NOTES:**  
1. FUEL SUPPLY PIPING FROM TANK TO ENGINE SHOULD BE 1/2" MINIMUM PIPE DIAMETER.  
2. FUEL RETURN PIPING FROM ENGINE TO TANK SHOULD BE 3/8" MINIMUM PIPE DIAMETER.

<small>THIS DRAWING AND THE INFORMATION HEREON ARE OUR PROPERTY AND MAY BE USED BY OTHERS ONLY AS AUTHORIZED BY US. UNPUBLISHED—ALL RIGHTS RESERVED UNDER THE COPYRIGHT LAWS.</small>				<b>CLARKE</b> Fire Protection Products, Inc.		
<b>CONTROLLED DRAWING</b>		DRWN ACRISTOFARO	NAME			
<b>MACHINE TOLERANCES</b>		DATE 22MAR07	INSTALLATION DRAWING, FIRE PUMP ENGINE JW6H-UF MODELS			
DECIMAL mm inch X ±1.5 XX ±0.8 ±0.06 XXX ±0.3 ±0.03	ENGR KJKUNKLER	MATERIAL	PART NO. UD-140			REV K
ANGULAR: ±0.5° SIMILAR TO	SCALE NTS		UNITS INCH [MM]	PAGE 2 OF 2		

8 7 6 5 4 3 2 1