

8 7 6 5 4 3 2 1

- DATUMS**
- A- - MOUNTING FACE OF FLYWHEEL
 - B- - ENGINE CRANKSHAFT
 - C- - ENGINE CRANKSHAFT VERTICAL CENTERLINE
 - D- - PUMP OR RIGHT ANGLE GEAR SHAFT HORIZONTAL CENTERLINE
 - E- - END OF PUMP OR RIGHT ANGLE GEAR SHAFT
 - F- - REAR FACE OF ENGINE HALF FALK HUB
 - G- - MOUNTING FACE OF UNIVERSAL DRIVE SHAFT ADAPTER
 - ⊙ - CENTER OF GRAVITY OF ENGINE
 - ↻ - CLOCKWISE ROTATION WHEN VIEWED FRONT OF ENGINE

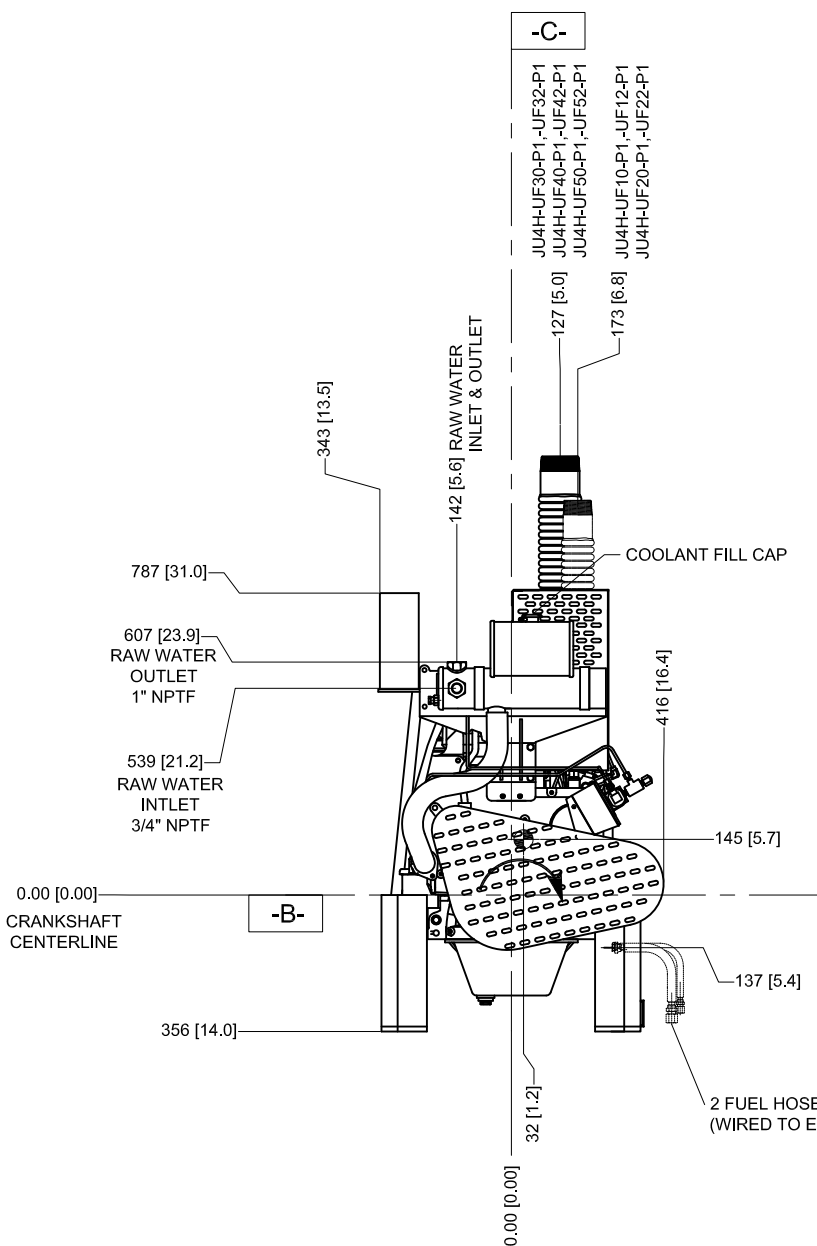
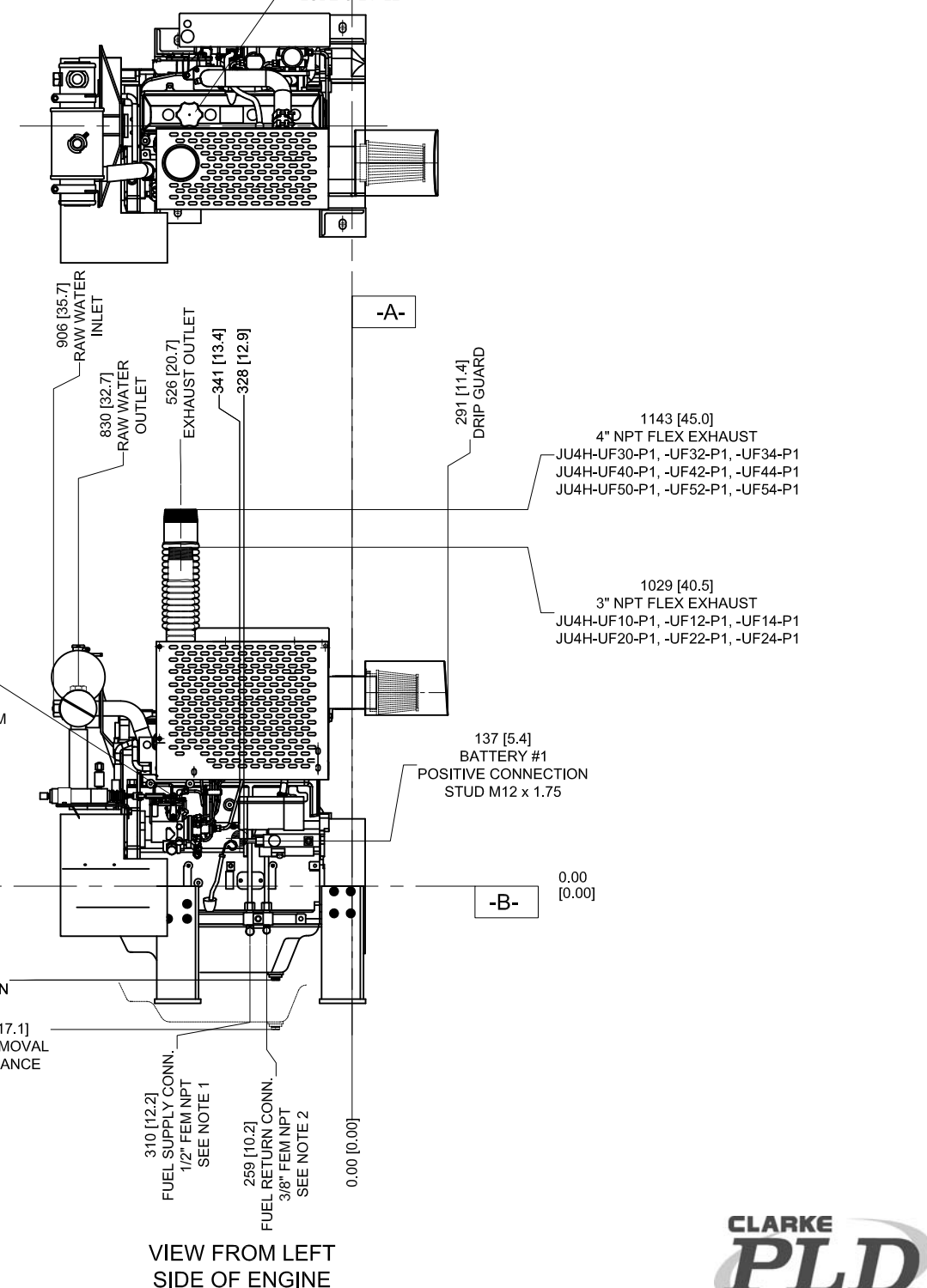
CAUTION
ALL PLUMBING MUST BE SUPPORTED AND/OR ISOLATED SO THAT NO WEIGHT OR STRESS IS APPLIED TO ANY ENGINE COMPONENT

ATTENTION
REFER TO THE SPECIFIC MODEL "INSTALLATION AND OPERATION DATA" FOR INSTALLATION GUIDELINES

JU4H-UF30-P1, JU4H-UF32-P1
JU4H-UF40-P1, JU4H-UF42-P1
JU4H-UF50-P1, JU4H-UF52-P1
SHOWN

JU4H-UF10-P1, JU4H-UF12-P1
JU4H-UF20-P1, JU4H-UF22-P1
IN PHANTOM

VIEW FROM TOP OF ENGINE



VIEW FROM FRONT OF ENGINE

GOVERNOR SPEED ADJUSTING
CW - INCREASE RPM
CCW - DECREASE RPM

NOTES:
1. FUEL SUPPLY PIPING FROM TANK TO ENGINE SHOULD BE 1/2" MINIMUM PIPE DIAMETER.
2. FUEL RETURN PIPING FROM ENGINE TO TANK SHOULD BE 3/8" MINIMUM PIPE DIAMETER.

DRAWING SUBJECT TO CHANGE WITHOUT NOTICE

DO NOT SCALE



REV	DESCRIPTION	ECN#	DWN	APVD	DATE	MACHINE TOLERANCES		CLARKE	
B	FRONT MOUNTING FOOT WAS [12.75] REAR MOUNTING FOOT WAS [11.35]	527	MAL	KRW	26OCT04	DECIMAL	mm	inch	CONTROLLED DRAWING DRWN S.KORENBLIT DATE 26APR04 ENGR K.J.KUNKLER MATERIAL SIMILAR TO D534
C	FUEL CONN SIZE WAS 3/8", RETURN SIZE WAS 1/4", ADDED NOTES 1&2, ADDED TOP VIEW FUEL PUMP CENTERLINE WAS 6.9	1022	MWL	KRW	22JUN06	X.	±1.5		
D	REMOVED "OPTIONAL" WORDING FROM FLEX EXHAUST CALLOUT	1157	JJW	KRW	19DEC06	X.X	±0.8	±0.06	
E	UPDATED ENGINE FEET MOUNTING DIMENSIONS	1408	RJT	KRW	13DEC07	X.XX	±0.3	±0.03	
F	CORRECTED LOCATION FUEL PUMP CENTERLINE	1622	KJM	KRW	12JAN09	ANGULAR: ±0.5°			
G	ADDED THE NEW DRIP GUARD	1201	KJM	KRW	19MAY09	SIMILAR TO D534			
H	REVISED ENGINE FOOT MOUNTING HOLE LOCATIONS PAGE 2	1901	JCA	KRW	28JUL10	THIS DRAWING AND THE INFORMATION HEREON ARE OUR PROPERTY AND MAY BE USED BY OTHERS ONLY AS AUTHORIZED BY US. UNPUBLISHED-ALL RIGHTS RESERVED UNDER THE COPYRIGHT LAWS.			

CLARKE
Fire Protection Products, Inc.

INSTALLATION DRAWING,
FIRE PUMP ENGINE
JU4H PLD SERIES DRIVERS

PART NO. **D540**

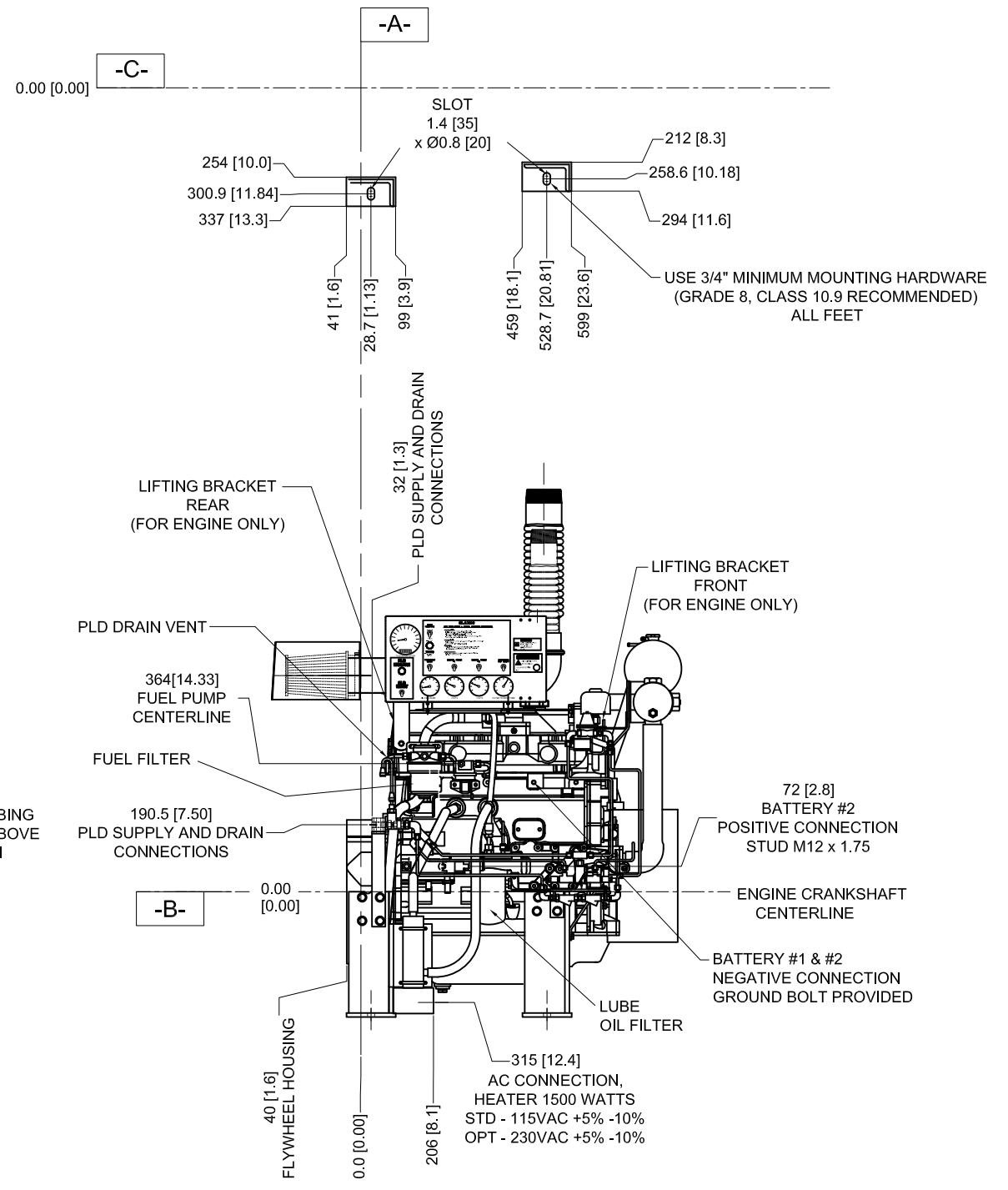
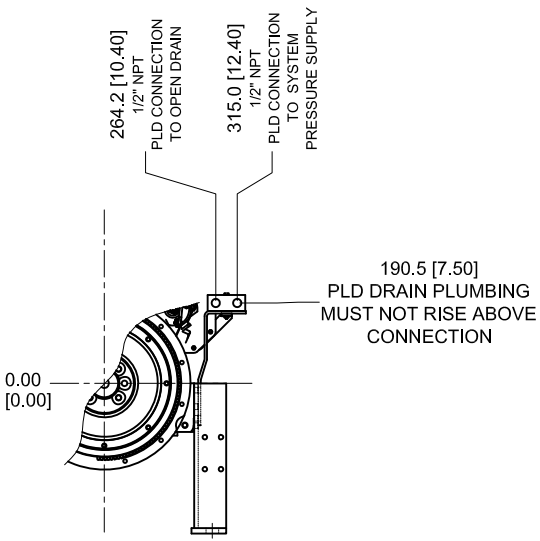
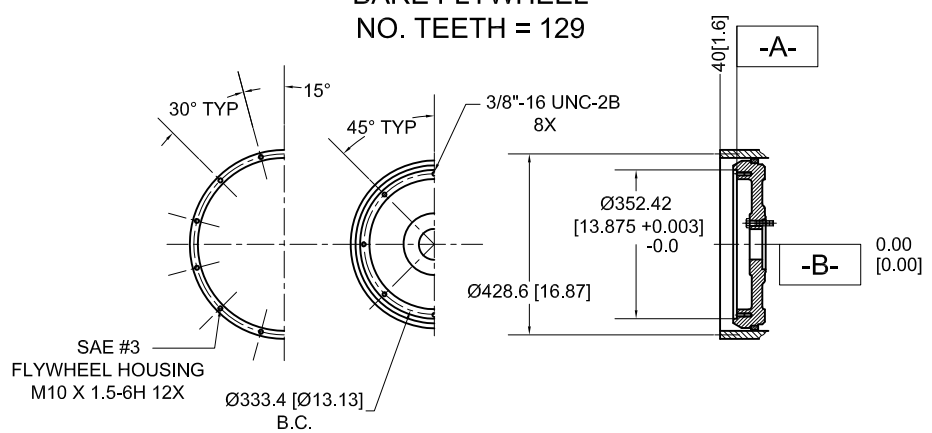
SCALE: NTS UNITS: MM [INCH]

PAGE 1 OF 2

8 7 6 5 4 3 2 1

FOR ENGINE SPECIFIC OPTIONS
SEE www.CLARKEFIRE.com

DETAIL DATUM -A-
BARE FLYWHEEL
NO. TEETH = 129



<small>THIS DRAWING AND THE INFORMATION HEREON ARE OUR PROPERTY AND MAY BE USED BY OTHERS ONLY AS AUTHORIZED BY US. UNPUBLISHED-ALL RIGHTS RESERVED UNDER THE COPYRIGHT LAWS.</small>				<h1>CLARKE</h1>	
CONTROLLED DRAWING		Fire Protection Products, Inc.		INSTALLATION DRAWING, FIRE PUMP ENGINE JU4H PLD SERIES DRIVERS	
MACHINE TOLERANCES DECIMAL mm inch X. ±1.5 X.X ±0.8 ±0.08 X.XX ±0.3 ±0.03 ANGULAR: ±0.5°		DRWN S.KORENBLIT DATE 26APR04 ENGR K.J.KUNKLER	NAME PART NO. D540		
SIMILAR TO D534		MATERIAL		SCALE NTS	UNITS MM [INCH]
				PAGE 2 OF 2	REV H