

8

7

6

5

4

3

2

1

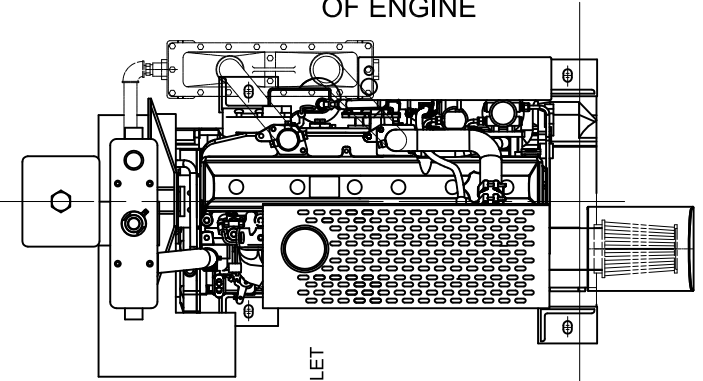
DATUMS

- A- - MOUNTING FACE OF FLYWHEEL
- B- - ENGINE CRANKSHAFT HORIZONTAL CENTERLINE
- C- - ENGINE CRANKSHAFT VERTICAL CENTERLINE
- D- - PUMP OR RIGHT ANGLE GEAR SHAFT HORIZONTAL CENTERLINE
- E- - END OF PUMP OR RIGHT ANGLE GEAR SHAFT
- F- - REAR FACE OF ENGINE HALF FALK HUB
- G- - MOUNTING FACE OF UNIVERSAL DRIVE SHAFT ADAPTER
- CENTER OF GRAVITY OF ENGINE
- CLOCKWISE ROTATION WHEN VIEWED FROM FRONT OF ENGINE

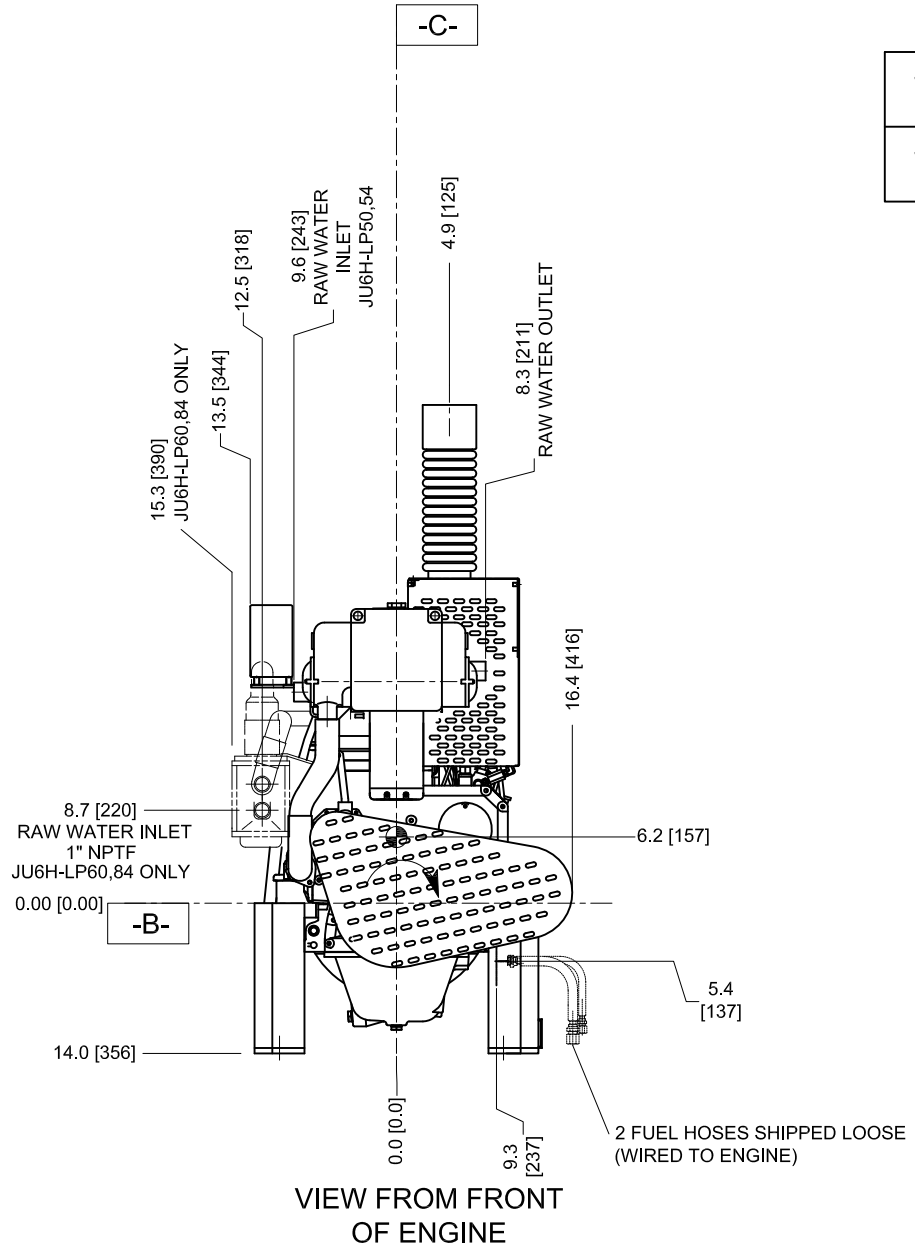
CAUTION
ALL PLUMBING MUST BE SUPPORTED AND/OR ISOLATED SO THAT NO WEIGHT OR STRESS IS APPLIED TO ANY ENGINE COMPONENT

ATTENTION
REFER TO THE SPECIFIC MODEL "INSTALLATION AND OPERATION DATA" FOR INSTALLATION GUIDELINES

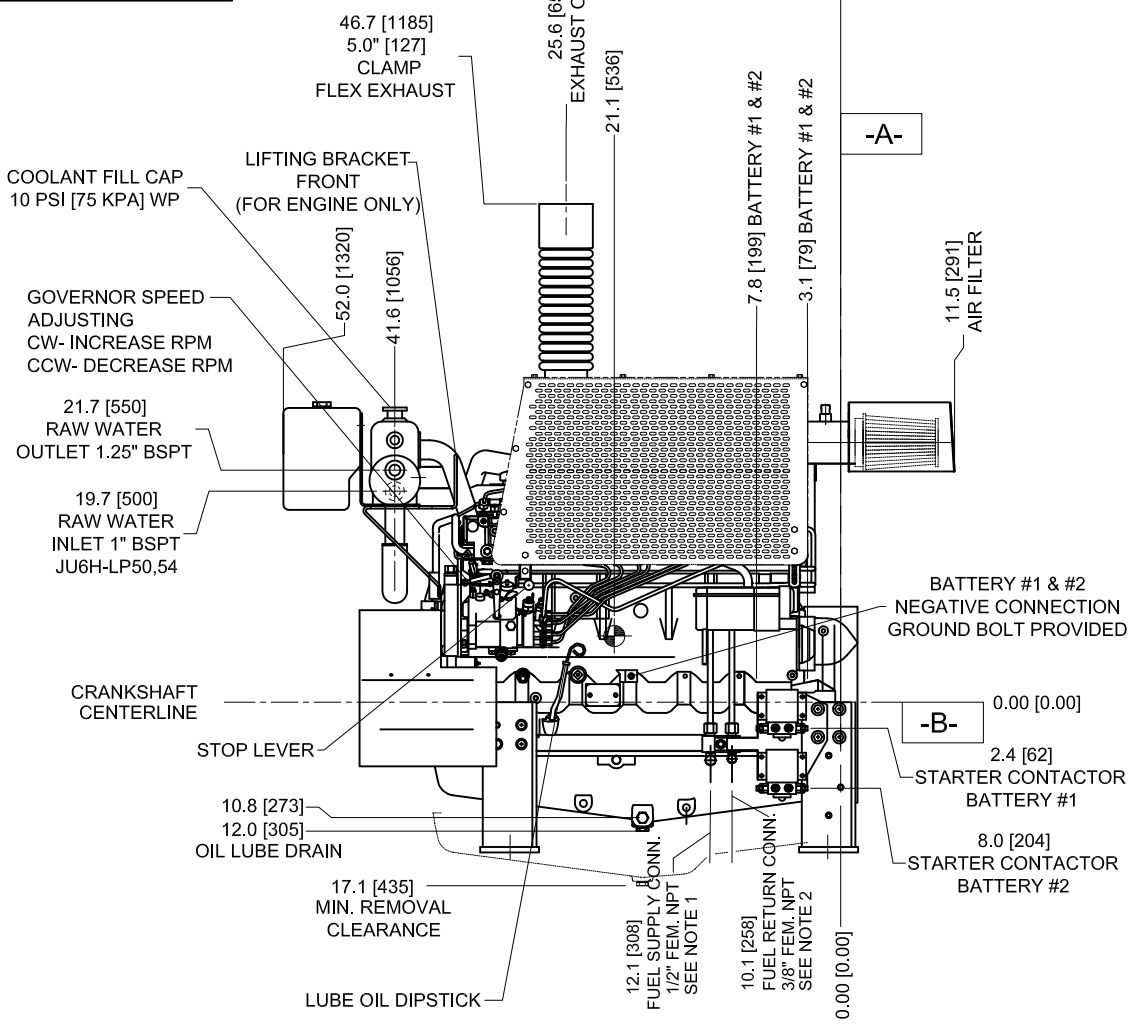
VIEW FROM TOP OF ENGINE



JU6H-LP50, -LP54 SHOWN
JU6H-LP60, -LP84 IN PHANTOM



VIEW FROM FRONT OF ENGINE



VIEW FROM LEFT SIDE OF ENGINE

- NOTES:
- FUEL SUPPLY PIPING FROM TANK TO ENGINE SHOULD BE 1/2" MINIMUM PIPE DIAMETER.
 - FUEL RETURN PIPING FROM ENGINE TO TANK SHOULD BE 3/8" MINIMUM PIPE DIAMETER.

DO NOT SCALE

DRAWING SUBJECT TO CHANGE WITHOUT NOTICE

SYM	REVISION	ECN#	DRWN	APVD	DATE
E	FLEX EXHAUST HEIGHT WAS 45.8 [1162]. (*) ADDED NOTE ABOVE TITLE BLOCK.	730	SK	KRW	20MAY05
F	ADDED COOLANT RECOVERY BOTTLE	873	JW	KRW	19MAY06
G	FUEL SUPPLY CONN WAS 3/8", RETURN SIZE WAS 1/4", ADDED NOTES 1&2, ADDED TOP VIEW, RAW WATER OUTLET WAS 1.0", FUEL PUMP CENTERLINE WAS 6.9, FUEL CONN. WAS BSPT	1022	MWL	AP	3JUL06
H	ADDED AIR FILTER DRIP SHIELD, ADDED ENGINE ROTATION DATUM	1157	MWL	KRW	23MAR07
J	UPDATED ENGINE MOUNTING FEET DIMENSIONS	1408	RJT	KRW	13DEC07
K	CORRECTED LOCATION FUEL PUMP CENTERLINE, REMOVED DRIP GUARD	1622	KJM	KRW	13JAN09
L	READDED AIR FILTER DRIP SHIELD	1157	MWL	KRW	23MAR07
M	REVISED ENGINE FOOT MOUNTING HOLE LOCATIONS	1901	JCA	ASC	28JUL10
N	ADDED NEW COOLANT TANK	2215	DGP	ASC	10MAY11

THIS DRAWING AND THE INFORMATION HEREON ARE OUR PROPERTY AND MAY BE USED BY OTHERS ONLY AS AUTHORIZED BY US. UNPUBLISHED-ALL RIGHTS RESERVED UNDER THE COPYRIGHT LAWS.

MACHINE TOLERANCES

DECIMAL mm inch
X. ±1.5
X.X ±0.8 ±0.06
X.XX ±0.3 ±0.03

ANGULAR: ±0.5°

SIMILAR TO **D526**

*FOR ENGINES BUILT IN UK BEGINNING JULY, 2006

CONTROLLED DRAWING

CLARKE
Fire Protection Products, Inc.

DRWN MALAUER NAME
DATE 26MAY04 INSTALLATION DRAWING, FIRE PUMP ENGINE
ENGR KJKUNKLER JU6H-LP50, JU6H-LP54,
JU6H-LP-60, JU6H-LP84

MATERIAL PART NO. **UD125** REV **N**

SCALE NTS UNITS INCH [MM] PAGE OF 1 2

8

7

6

5

4

3

2

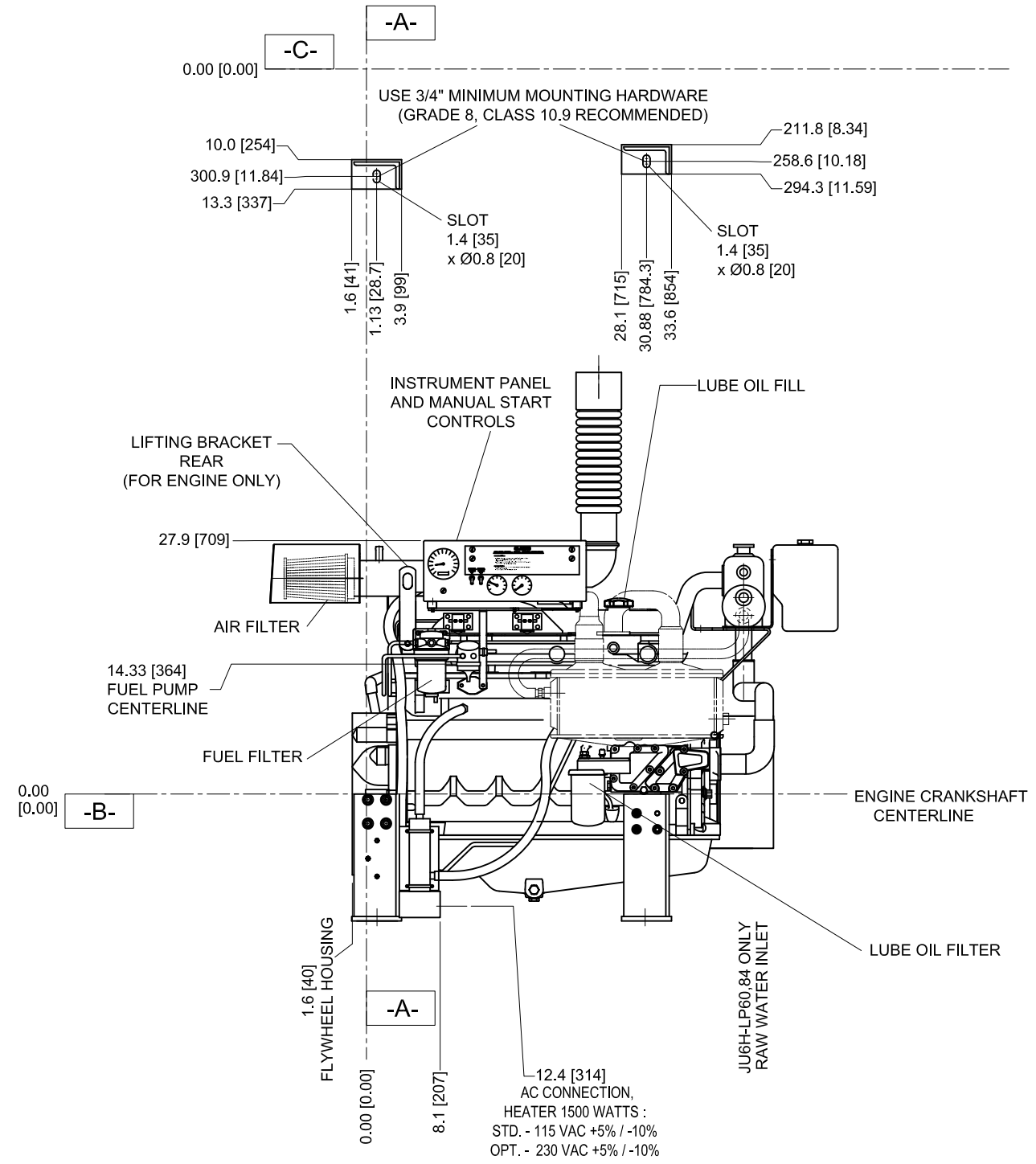
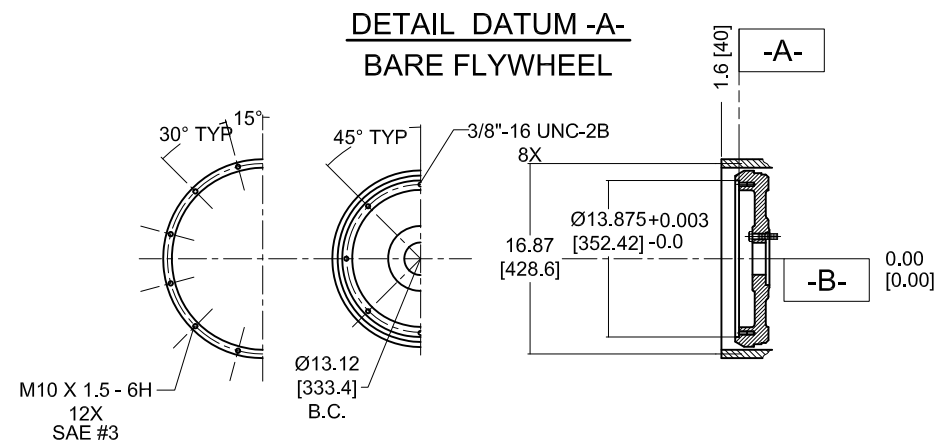
1

8 7 6 5 4 3 2 1

H
G
F
E
D
C
B
A

H
G
F
E
D
C
B
A

FOR ENGINE SPECIFIC OPTIONS
SEE www.CLARKEFIRE.com



***FOR ENGINES BUILT IN UK BEGINNING JULY, 2006**

**DRAWING SUBJECT
TO CHANGE
WITHOUT NOTICE**

<small>THIS DRAWING AND THE INFORMATION HEREON ARE OUR PROPERTY AND MAY BE USED BY OTHERS ONLY AS AUTHORIZED BY US. UNPUBLISHED-ALL RIGHTS RESERVED UNDER THE COPYRIGHT LAWS.</small>		<input type="checkbox"/> AS IS <input checked="" type="checkbox"/> CONTROLLED DRAWING			
MACHINE TOLERANCES DECIMAL mm inch X. ±1.5 X.X ±0.8 ±0.06 X.XX ±0.3 ±0.03 ANGULAR: ±0.5° SIMILAR TO D526		DRWN MALAUER DATE 26MAY04 ENGR KJKUNKLER		NAME INSTALLATION DRAWING, FIRE PUMP ENGINE JU6H-LP50, JU6H-LP54, JU6H-LP-60, JU6H-LP84	
		MATERIAL		PART NO. UD125 REV N	
		SCALE NTS		UNITS INCH [MM]	
		PAGE 2 OF 2			

8 7 6 5 4 3 2 1