

DATUMS

- A- - MOUNTING FACE OF FLYWHEEL
- B- - ENGINE CRANKSHAFT HORIZONTAL CENTERLINE
- C- - ENGINE CRANKSHAFT VERTICAL CENTERLINE
- CENTER OF GRAVITY OF ENGINE
- CLOCKWISE ROTATION WHEN VIEWED FROM RADIATOR / FRONT OF ENGINE

CAUTION

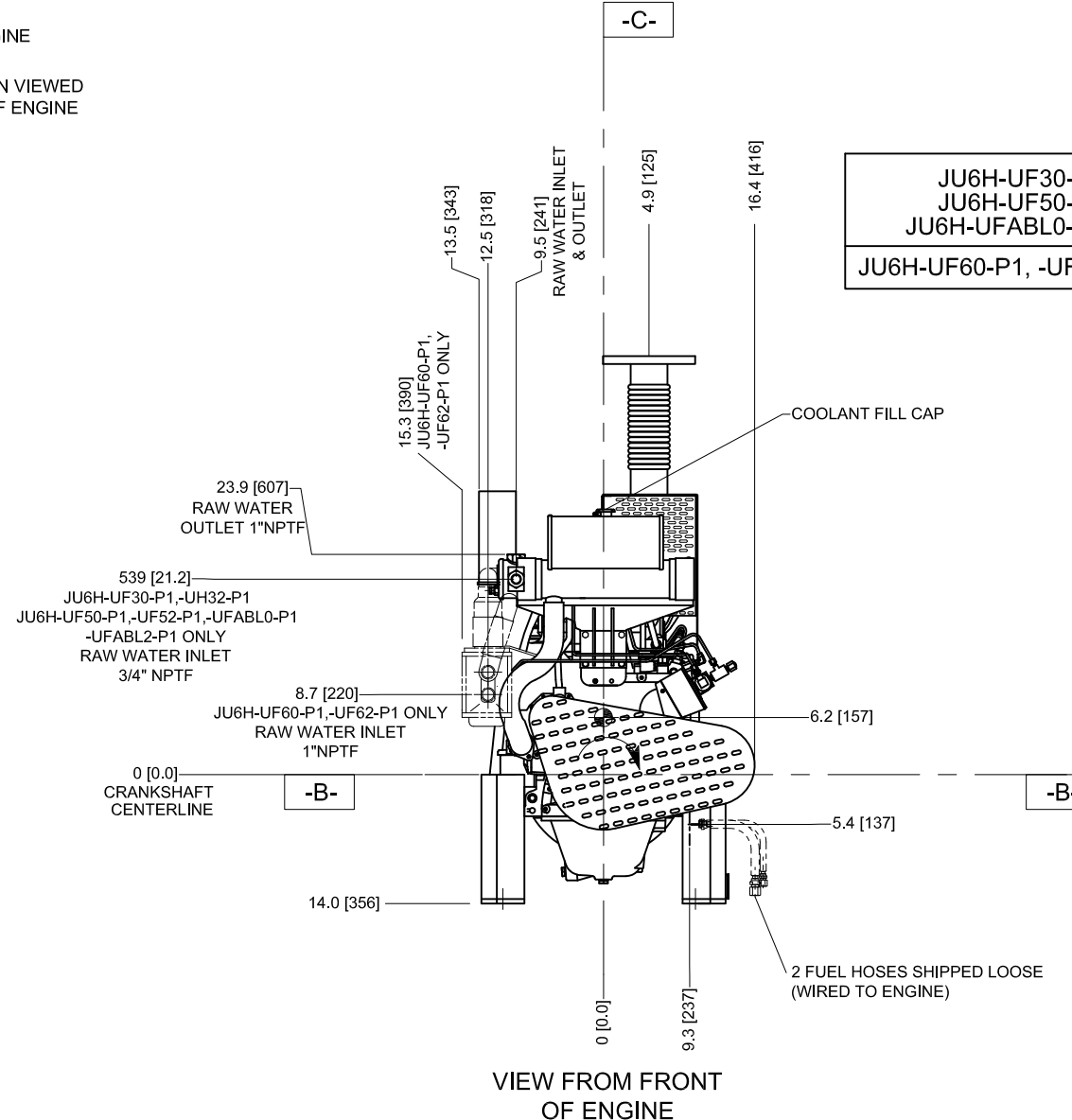
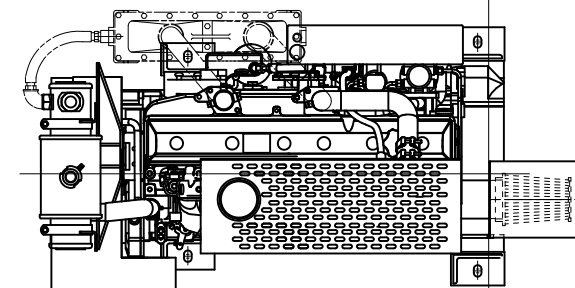
ALL PLUMBING MUST BE SUPPORTED AND/OR ISOLATED SO THAT NO WEIGHT OR STRESS IS APPLIED TO ANY ENGINE COMPONENT

ATTENTION

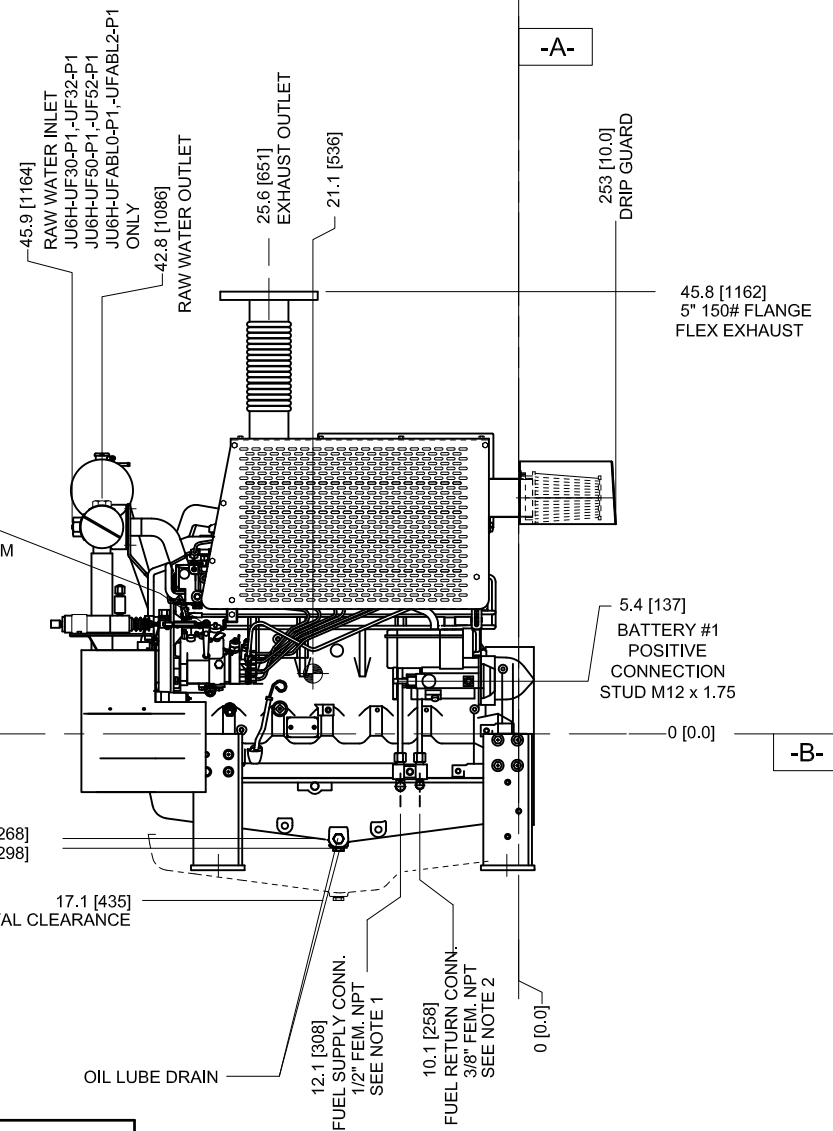
REFER TO THE SPECIFIC MODEL "INSTALLATION AND OPERATION DATA" FOR INSTALLATION GUIDELINES

JU6H-UF30-P1, -UF32-P1
 JU6H-UF50-P1, -UF52-P1
 JU6H-UFABL0-P1, -UFABL2-P1
 JU6H-UF60-P1, -UF62-P1 IN PHANTOM

VIEW FROM TOP OF ENGINE



VIEW FROM FRONT OF ENGINE



VIEW FROM LEFT SIDE OF ENGINE

DRAWING SUBJECT TO CHANGE WITHOUT NOTICE

DO NOT SCALE

- NOTES:
- FUEL SUPPLY PIPING FROM TANK TO ENGINE SHOULD BE 1/2" MINIMUM PIPE DIAMETER.
 - FUEL RETURN PIPING FROM ENGINE TO TANK SHOULD BE 3/8" MINIMUM PIPE DIAMETER.

REV	DESCRIPTION	ECN#	DWN	APVD	DATE
B	# BOLTS FOR FLANGE 81 WAS 4	473	SK	KRW	29JUL04
C	FRONT MOUNTING FEET WIDTH WAS [12.75] REAR MOUNTING FEET WIDTH WAS [11.35]	527	MAL	KRW	04NOV04
D	FUEL SUPPLY CONN SIZE WAS 3/8", RETURN SIZE WAS 1/4", ADDED NOTES 1&2, ADDED TOP VIEW FUEL PUMP CENTERLINE WAS 6.9	1022	MWL	KRW	26JUN06
E	REMOVED "OPTIONAL" WORDING FROM FLEX EXHAUST CALLOUT	1157	JJW	KRW	19DEC06
F	UPDATED MOUNTING FEET DIMENSIONS	1408	RJT	KRW	13DEC07
G	ADDED MODELS ABL0-P1 & ABL2-P1	1226	MAL	KRW	10SEP08
H	CORRECTED LOCATION FUEL PUMP CENTERLINE	1622	KJM	KRW	13JAN09
J	ADDED DRIP GUARD	1201	MAL	KRW	09OCT08
K	REVISED ENGINE FOOT MOUNTING HOLE LOCATIONS PAGE 2	1901	JCA	ASC	28JUL10

THIS DRAWING AND THE INFORMATION HEREON ARE OUR PROPERTY AND MAY BE USED BY OTHERS ONLY AS AUTHORIZED BY US. UNPUBLISHED-ALL RIGHTS RESERVED UNDER THE COPYRIGHT LAWS.

CONTROLLED DRAWING

CLARKE

Fire Protection Products, Inc.

DRWN S.KORENBLIT
 DATE 03MAY04
 ENGR K.J.KUNKLER
 MATERIAL
 SIMILAR TO D536

NAME
**INSTALLATION DRAWING
 FIRE PUMP ENGINE
 JU6H PLD SERIES DRIVERS**
 PART NO. **D541**
 SCALE NTS UNITS INCH [MM]
 PAGE OF 1 2



8

7

6

5

4

3

2

1

H

G

F

E

D

C

B

A

H

G

F

E

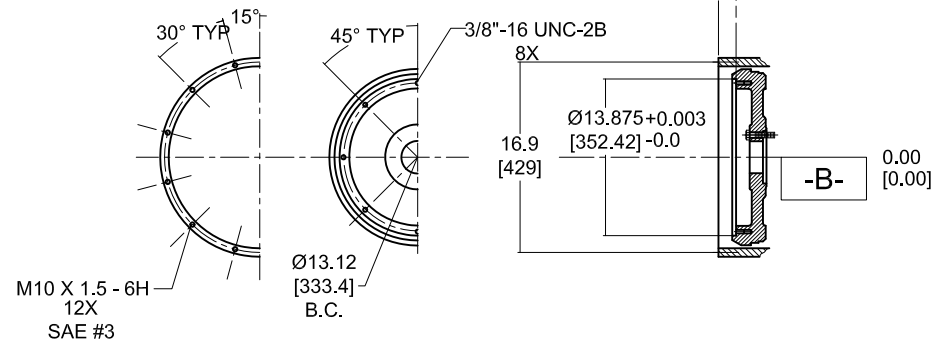
D

C

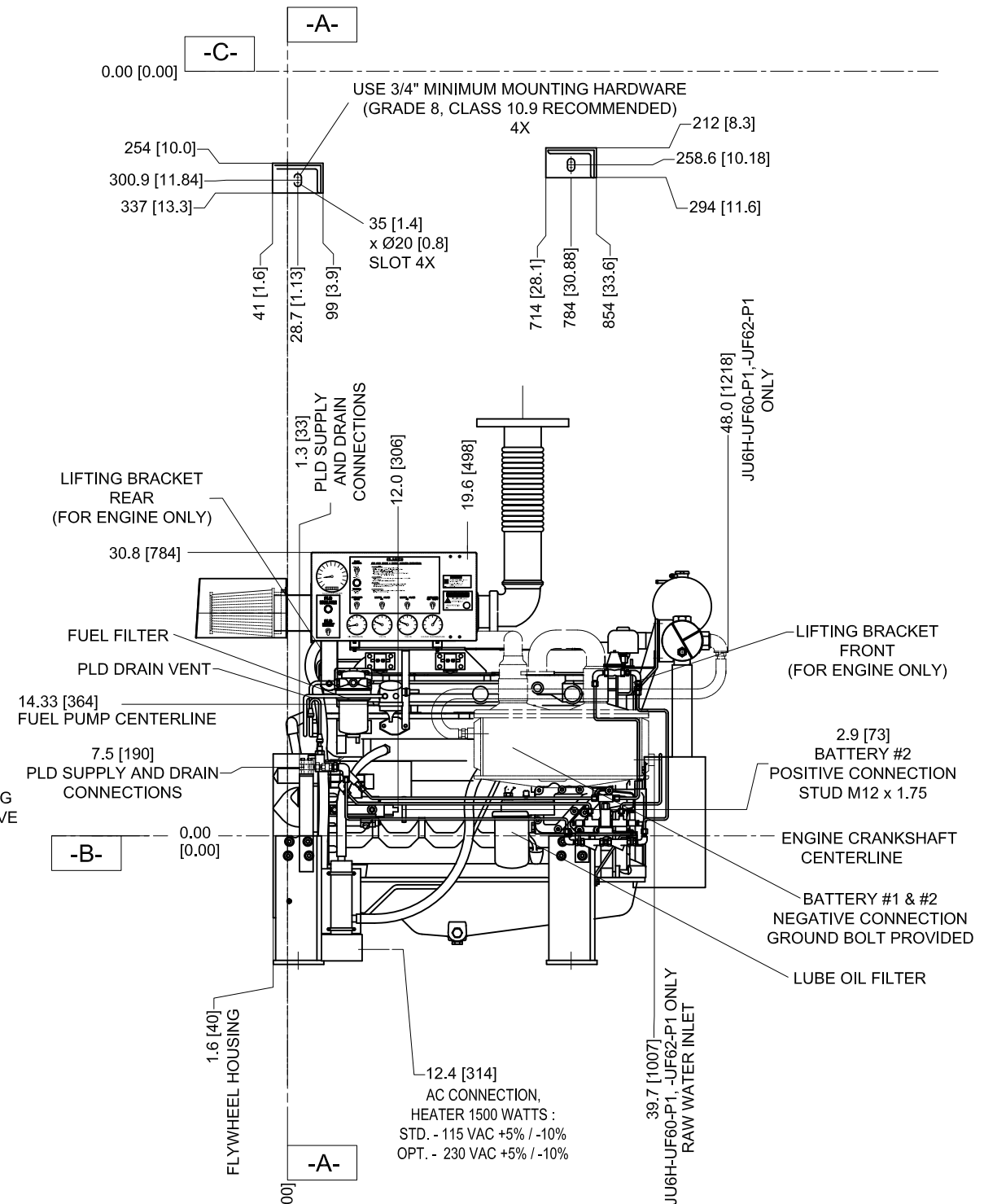
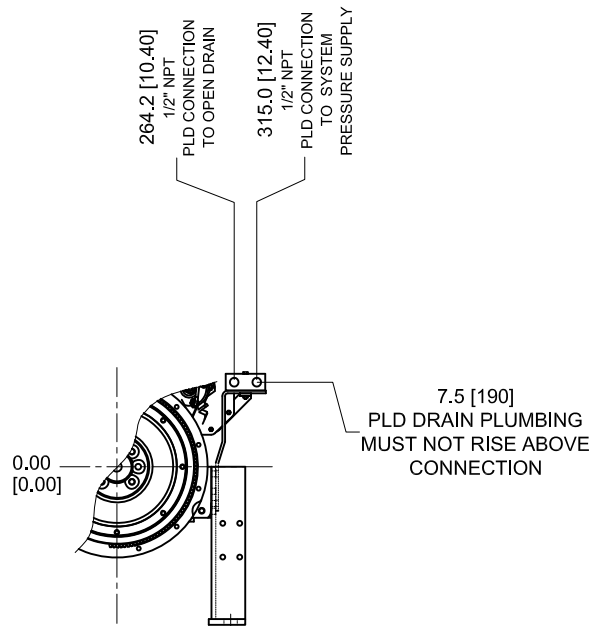
B

A

DETAIL DATUM -A-
BARE FLYWHEEL



FOR ENGINE SPECIFIC OPTIONS
SEE www.CLARKEFIRE.com



THIS DRAWING AND THE INFORMATION HEREON ARE OUR PROPERTY AND MAY BE USED BY OTHERS ONLY AS AUTHORIZED BY US. UNPUBLISHED-ALL RIGHTS RESERVED UNDER THE COPYRIGHT LAWS.

CLARKE
Fire Protection Products, Inc.

CONTROLLED DRAWING

DRWN S.KORENBLIT NAME
DATE 03MAY04
ENGR K.J.KUNKLER

MACHINE TOLERANCES
DECIMAL mm inch
X ±1.5
X.X ±0.8 ±0.06
X.XX ±0.3 ±0.03
ANGULAR: ±0.5°

MATERIAL

SIMILAR TO D536

INSTALATION DRAWING
FIRE PUMP ENGINE
JU6H PLD SERIES DRIVERS

PART NO. D541 REV K

SCALE NTS UNITS INCH [MM] PAGE OF 2 2