

8

7

6

5

4

3

2

1

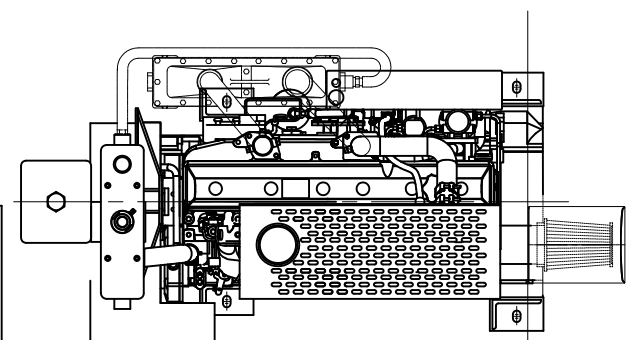
DATUMS

- A- - MOUNTING FACE OF FLYWHEEL
- B- - ENGINE CRANKSHAFT HORIZONTAL CENTERLINE
- C- - ENGINE CRANKSHAFT VERTICAL CENTERLINE
- D- - PUMP OR RIGHT ANGLE GEAR SHAFT HORIZONTAL CENTERLINE
- E- - END OF PUMP OR RIGHT ANGLE GEAR SHAFT
- F- - REAR FACE OF ENGINE HALF FALK HUB
- G- - MOUNTING FACE OF UNIVERSAL DRIVE SHAFT ADAPTER
- CENTER OF GRAVITY OF ENGINE
- CLOCKWISE ROTATION WHEN VIEWED FROM FRONT OF ENGINE

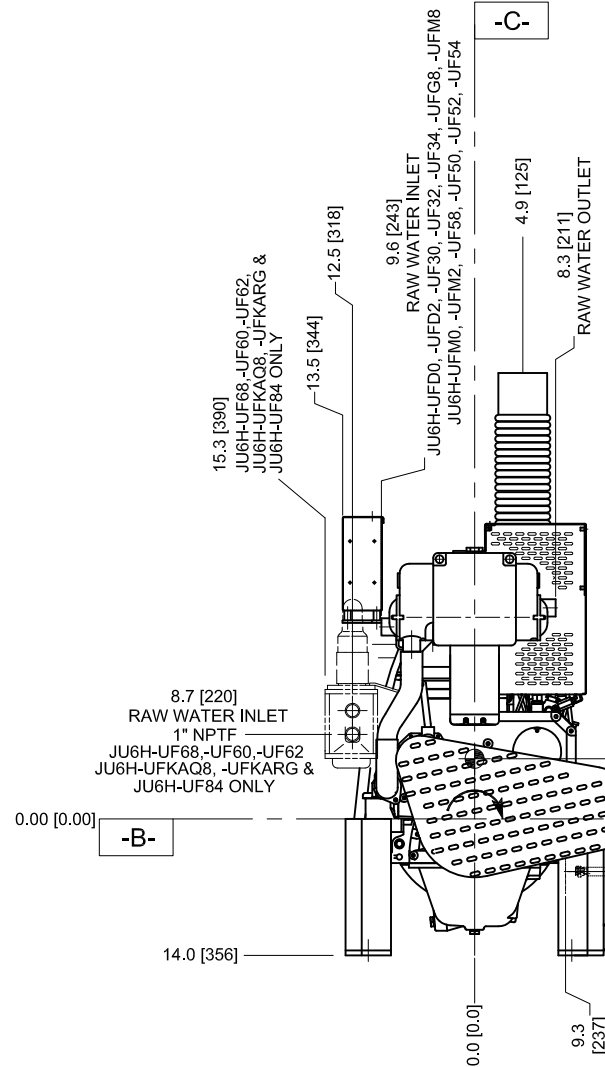
CAUTION
 ALL PLUMBING MUST BE SUPPORTED AND/OR ISOLATED SO THAT NO WEIGHT OR STRESS IS APPLIED TO ANY ENGINE COMPONENT

ATTENTION
 REFER TO THE SPECIFIC MODEL "INSTALLATION AND OPERATION DATA" FOR INSTALLATION GUIDELINES

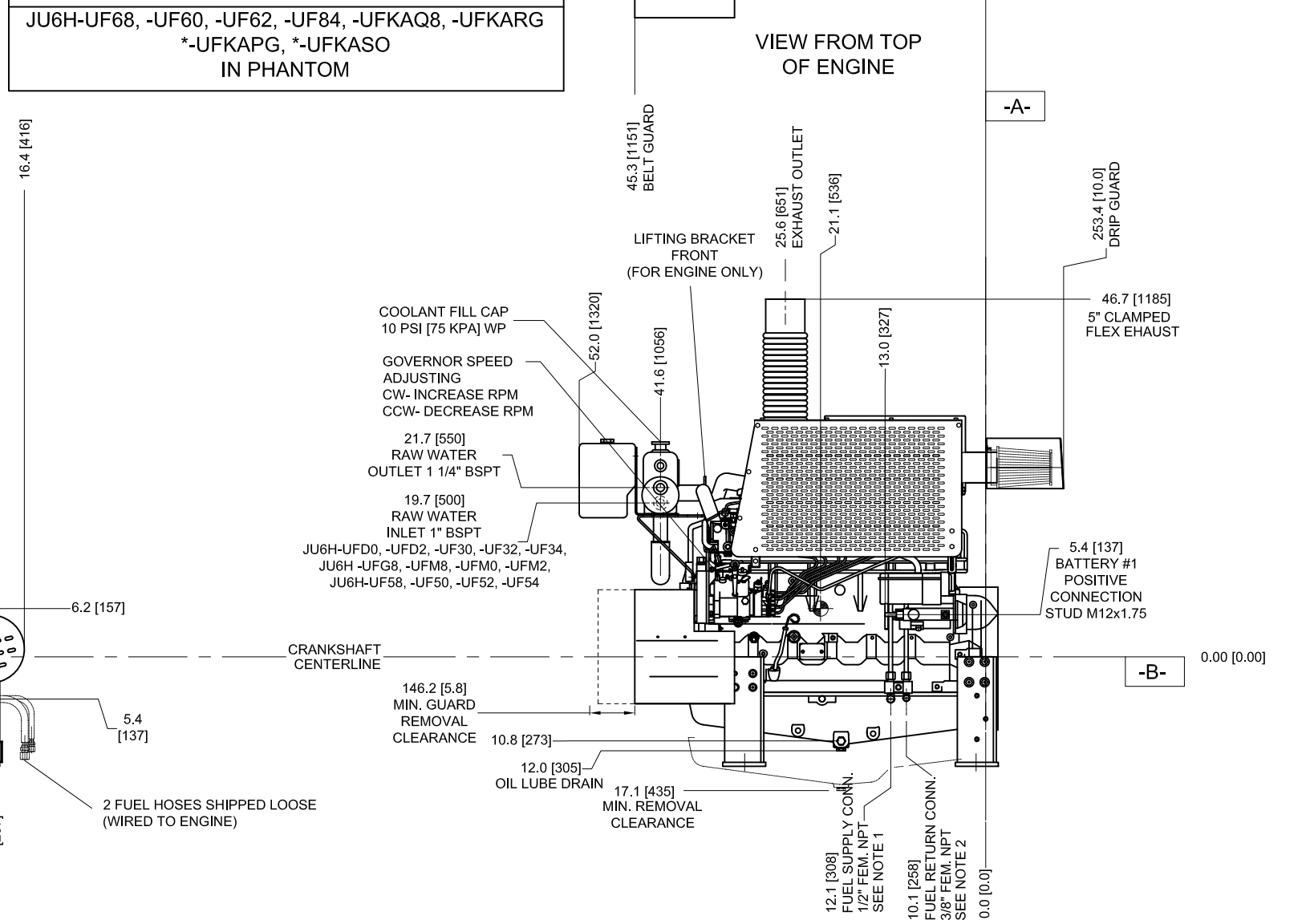
JU6H-UFD0, -UFD2, -UF30, -UF32, -UF34, -UFG8, -UFM8
 JU6H-UFM0, -UFM2, -UF58, -UF50, -UF52, -UF54, -UFABL0, -UFABL2, -UFABL8
 SHOWN
 JU6H-UF68, -UF60, -UF62, -UF84, -UFKAQ8, -UFKARG
 *-UFKAPG, *-UFKASO
 IN PHANTOM



VIEW FROM TOP OF ENGINE



VIEW FROM FRONT OF ENGINE



VIEW FROM LEFT SIDE OF ENGINE

NOTES:
 1. FUEL SUPPLY PIPING FROM TANK TO ENGINE SHOULD BE 1/2" MINIMUM PIPE DIAMETER.
 2. FUEL RETURN PIPING FROM ENGINE TO TANK SHOULD BE 3/8" MINIMUM PIPE DIAMETER.

DRAWING SUBJECT TO CHANGE WITHOUT NOTICE

DO NOT SCALE

REV	DESCRIPTION	ECN#	DWN	APVD	DATE
P	UPDATED ENGINE MODELS AND REMOVED OPTIONS FROM PAGE 2	1806	RJT	KRW	13JAN10
Q	REVISED ENGINE FOOT MOUNTING HOLE LOCATIONS - PAGE 2	1901	JCA	ASC	28JUL10
R	ADDED MODELS -UFAAPG, -UFAASO	2159	JCA	KJK	24FEB11
S	*MODELS WAS -UFAAPG, -UFAASO	1259	JCA	KJK	07MAR11
T	ADDED NEW COOLANT TANK	2215	DGP	ASC	10MAY11
U	ADDED ENGINE MODELS -UFABL0, L2, AND L8	2640	DKP	ASC	27MAR12

THIS DRAWING AND THE INFORMATION HEREON ARE OUR PROPERTY AND MAY BE USED BY OTHERS ONLY AS AUTHORIZED BY US. UNPUBLISHED-ALL RIGHTS RESERVED UNDER THE COPYRIGHT LAWS.

CONTROLLED DRAWING

CLARKE
 Fire Protection Products, Inc.

DRWN: S.KORENBLIT
 DATE: 27MAR03
 ENGR: K.J.KUNKLER

MATERIAL

NAME: INSTALLATION DRAWING- FIRE PUMP ENGINE
 JU6H-UFD0, -UFD2, -UF30, -UF32, -UF34, -UFG8, -UFM8
 JU6H-UFM0, -UFM2, -UF58, -UF50, -UF52, -UF54, -UF68
 JU6H-UF60, -UF62, -UF84, -UFKAQ8, -UFKARG, *-UFKAPG, *-UFKASO, -UFABL0, -UFABL2, -UFABL8

PART NO. **D538** REV **U**

SCALE: NTS UNITS: INCH [MM] PAGE OF 1 2

8

7

6

5

4

3

2

1

8

7

6

5

4

3

2

1

H

G

F

E

D

C

B

A

H

G

F

E

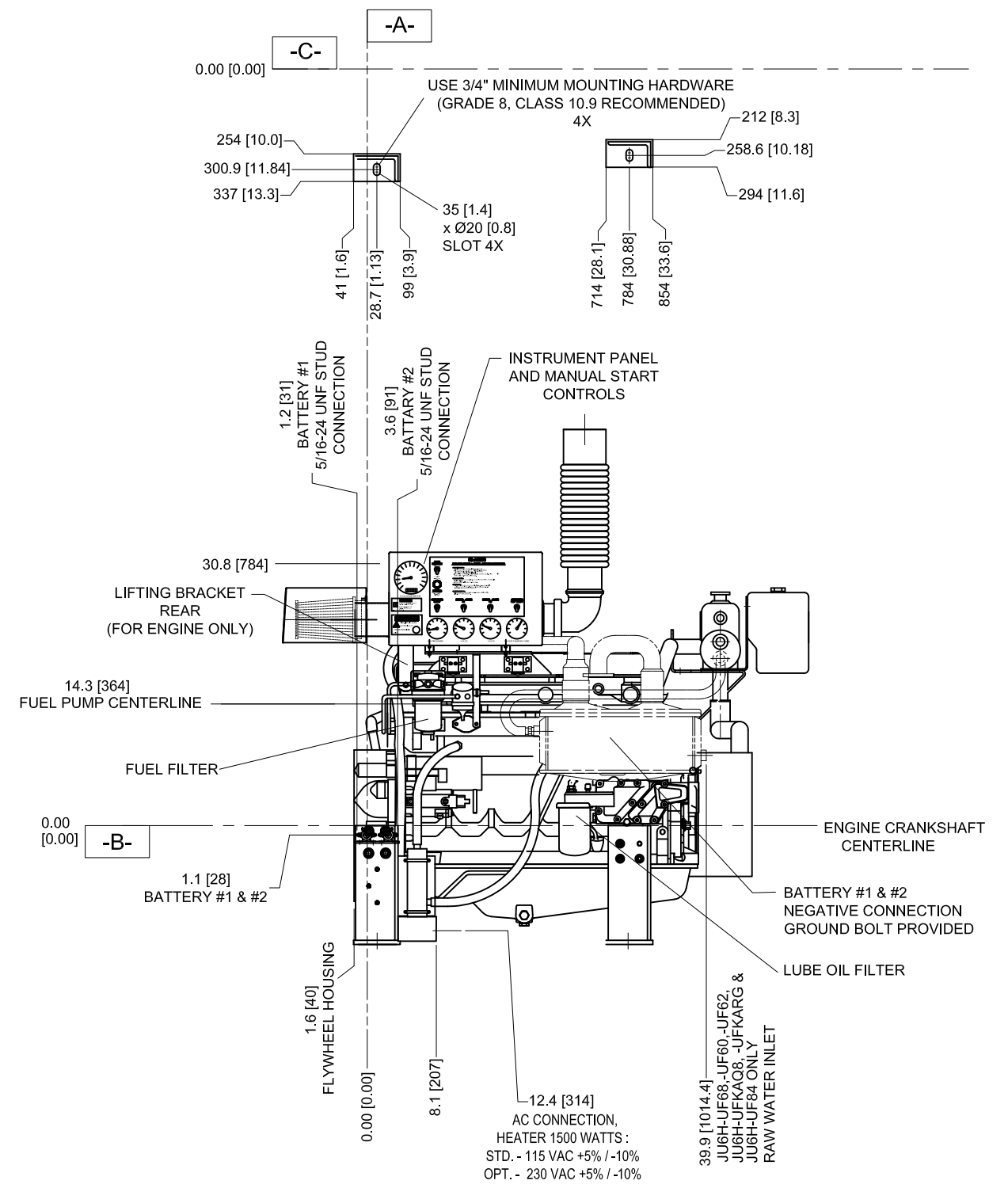
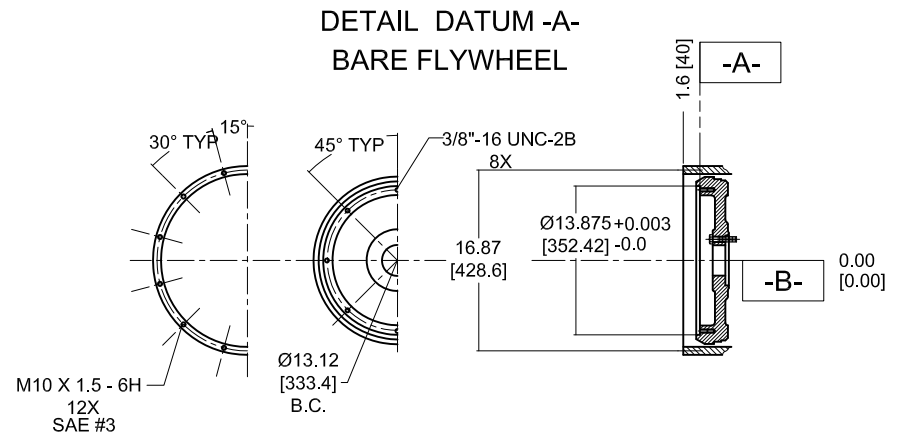
D

C

B

A

FOR ENGINE SPECIFIC OPTIONS
SEE www.CLARKEFIRE.com



***FOR ENGINES BUILT IN UK BEGINNING JULY, 2006**

**DRAWING SUBJECT
TO CHANGE
WITHOUT NOTICE**

<small>THIS DRAWING AND THE INFORMATION HEREON ARE OUR PROPERTY AND MAY BE USED BY OTHERS ONLY AS AUTHORIZED BY US. UNPUBLISHED-ALL RIGHTS RESERVED UNDER THE COPYRIGHT LAWS.</small>		<input type="checkbox"/> ASSES <input checked="" type="checkbox"/> CONTROLLED DRAWING		CLARKE Fire Protection Products, Inc.	
MACHINE TOLERANCES DECIMAL mm inch X. ±1.5 X.X ±0.8 ±0.06 X.XX ±0.3 ±0.03 ANGULAR: ±0.5° SIMILAR TO D526		DRWN S.KORENBLIT DATE 27MAR03 ENGR K.J.KUNKLER MATERIAL	NAME INSTALLATION DRAWING- FIRE PUMP ENGINE JU6H-UF00, -UF02, -UF30, -UF32, -UF34, -UFG8, -UFM8 JU6H-UFM0, -UFM2, -UF58, -UF50, -UF52, -UF54, -UF68, -UF60, JU6H-UF62, -UF84, -UFKAQ8, -UFKARG, *-UFKAPG, *-UFKASO, -UFABL0, -UFABL2, -UFABL8		
		PART NO. D538		REV U	
		SCALE NTS	UNITS INCH [MM]	PAGE 2 OF 2	

8

7

6

5

4

3

2

1