

8 7 6 5 4 3 2 1

**DO NOT SCALE**

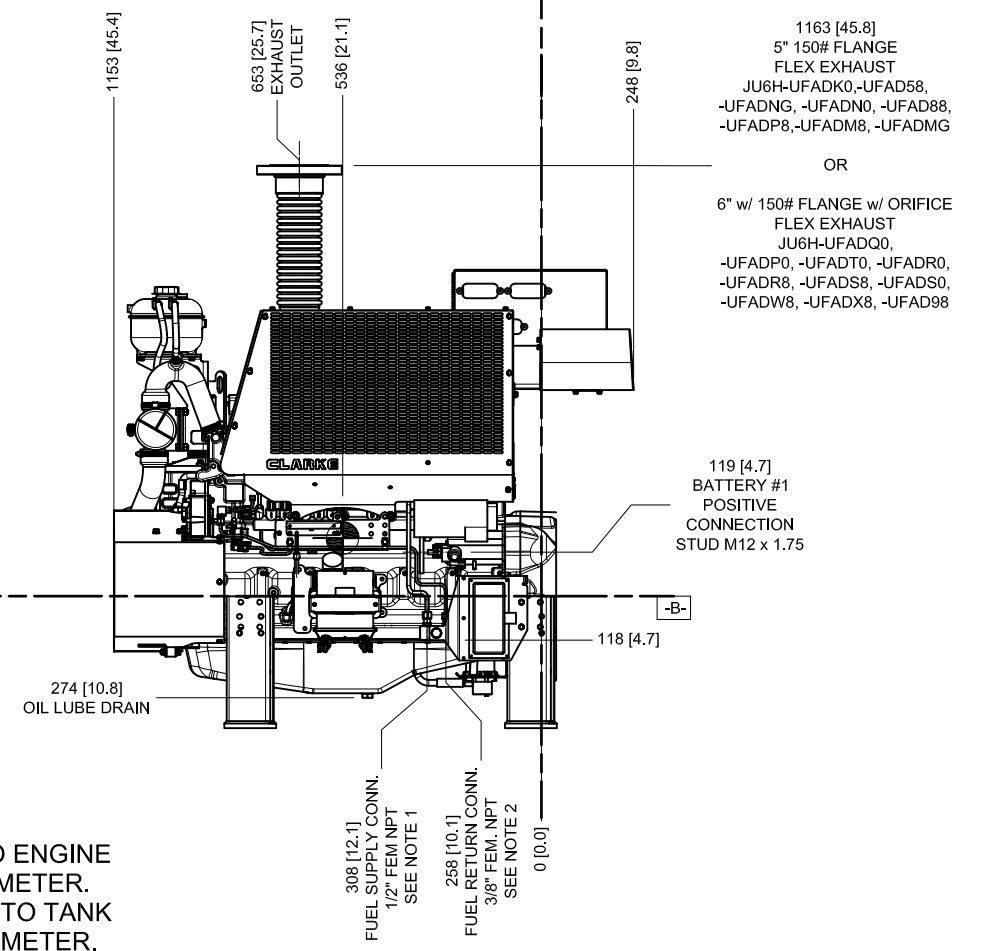
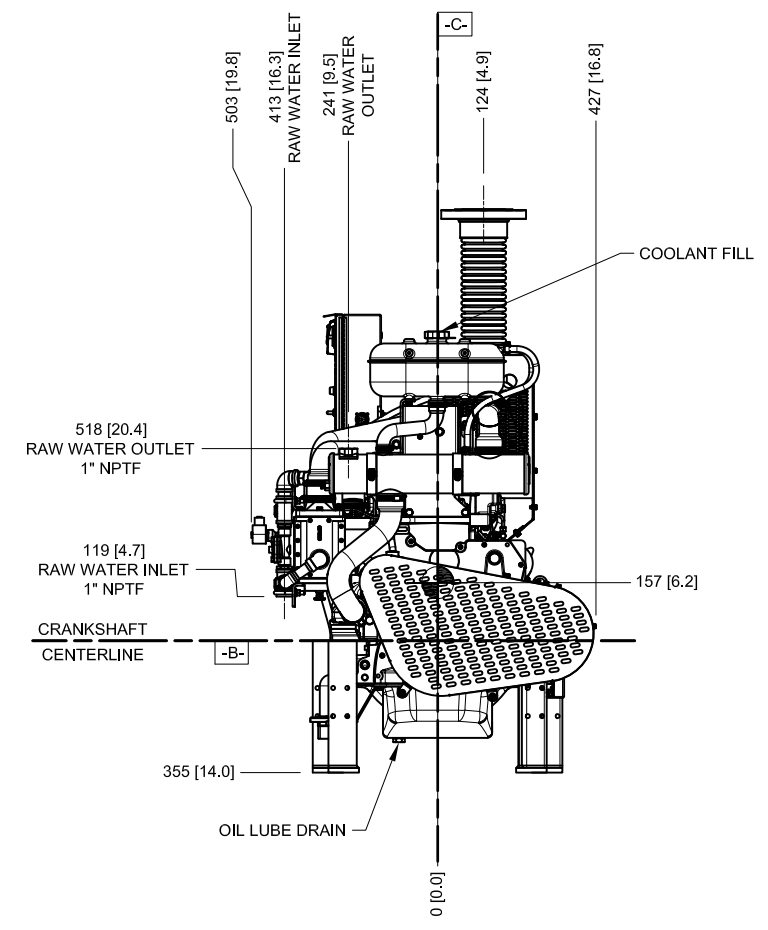
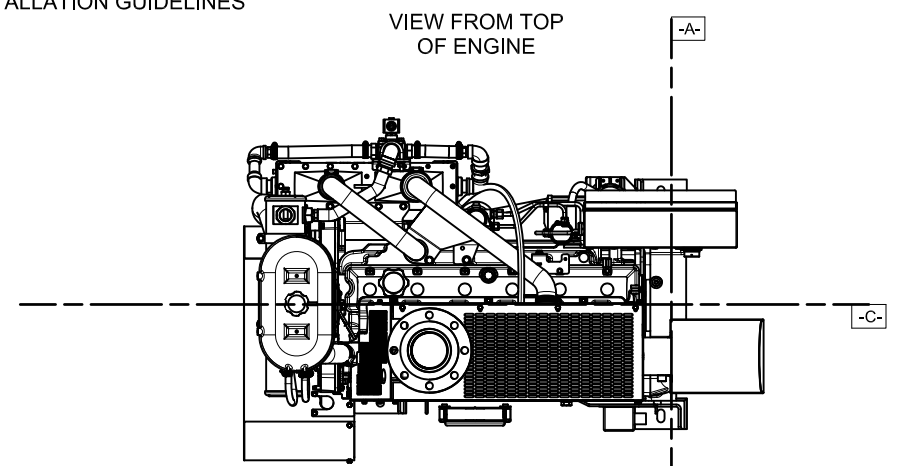
**DATUMS:**

- A- - MOUNTING FACE OF FLYWHEEL
- B- - ENGINE CRANKSHAFT HORIZONTAL CENTERLINE
- C- - ENGINE CRANKSHAFT VERTICAL CENTERLINE
- CENTER OF GRAVITY OF ENGINE
- CLOCKWISE ROTATION WHEN VIEWED FROM FRONT OF ENGINE

**CAUTION:**  
ALL PLUMBING MUST BE SUPPORTED AND/OR ISOLATED SO THAT NO WEIGHT OR STRESS IS APPLIED TO ANY ENGINE COMPONENT

**ATTENTION**  
REFER TO THE SPECIFIC MODEL "INSTALLATION AND OPERATION DATA" FOR INSTALLATION GUIDELINES

"TRWA" (TURBOCHARGED w/ RAW WATER AFTERCOOLING) MODELS	JU6H-UFAD58, -UFAD88 JU6H-UFADK0, -UFADNG JU6H-UFADP8, -UFADN0 JU6H-UFADM8, -UFADMG JU6H-UFADP8 (MODELS SHOWN)
	JU6H-UFAD98 -UFADP0 JU6H -UFADQ0, -UFADR0 JU6H-UFADR8, -UFADS0 JU6H-UFADS8, -UFADT0 JU6H-UFADW8,-UFADX8



- NOTES:**
- FUEL SUPPLY PIPING FROM TANK TO ENGINE SHOULD BE 1/2" MINIMUM PIPE DIAMETER.
  - FUEL RETURN PIPING FROM ENGINE TO TANK SHOULD BE 3/8" MINIMUM PIPE DIAMETER.

**DRAWING SUBJECT TO CHANGE WITHOUT NOTICE**

REV	DESCRIPTION	ECN#	DWN	APVD	DATE
A	ISSUED ENGINEERING DRAWING	572	MWL	<i>KJE</i>	02SEP08
B	ADDED NEW TIER 3 ENGINE MODELS	1645	KJM	<i>KJE</i>	06JAN09
C	ADDED JU6H-UFADP8 ENGINE MODEL	1645	MAL	<i>KJE</i>	23FEB09
D	REVISED EXH FLEX CONNECTION DATA	1645	DMP	<i>KJE</i>	09NOV09
E	REVISED EXH FLEX CONNECTION DATA	1997	JCA	<i>KJE</i>	23JUN10
F	REVISED ENGINE FOOT MOUNTING HOLE LOCATIONS - PAGE 2	1901	JCA	<i>ASC</i>	28JUL10
G	ADDED DIMENSIONS FRONT VIEW ZONE D6 PG1	2106	DMP	<i>KJE</i>	28OCT10
H	ADDED ENGINE MODELS: JU6H-UFADM8 & JU6H-UFADMG	2173	JCA	<i>KJE</i>	09DEC10

THIS DRAWING AND THE INFORMATION HEREON ARE OUR PROPERTY AND MAY BE USED BY OTHERS ONLY AS AUTHORIZED BY US. UNPUBLISHED-ALL RIGHTS RESERVED UNDER THE COPYRIGHT LAWS.

**CLARKE**  
Fire Protection Products, Inc.

CONTROLLED DRAWING  YES  NO

DRWN: MWLEMING  
DATE: 2/25/2009  
ENGR: KJUNKLER

NAME: **INSTALLATION DRAWING, FIRE PUMP ENGINE JU6H TIER 3 MODELS**

MATERIAL: \_\_\_\_\_  
PART NO.: **D628**

SCALE: NTS  
UNITS: MM [INCH]

REV: H  
PAGE: 1 OF 2

8 7 6 5 4 3 2 1

8

7

6

5

4

3

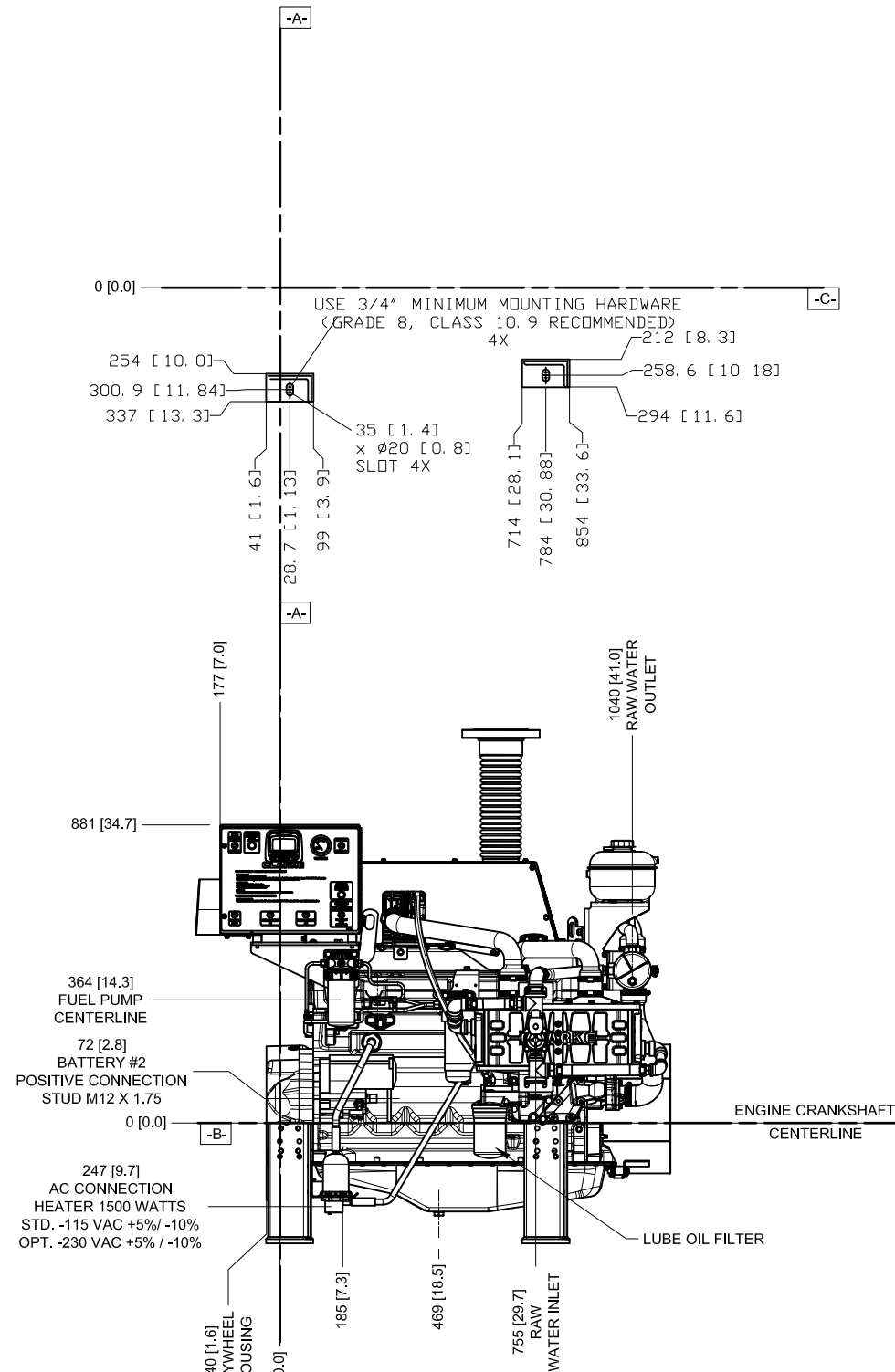
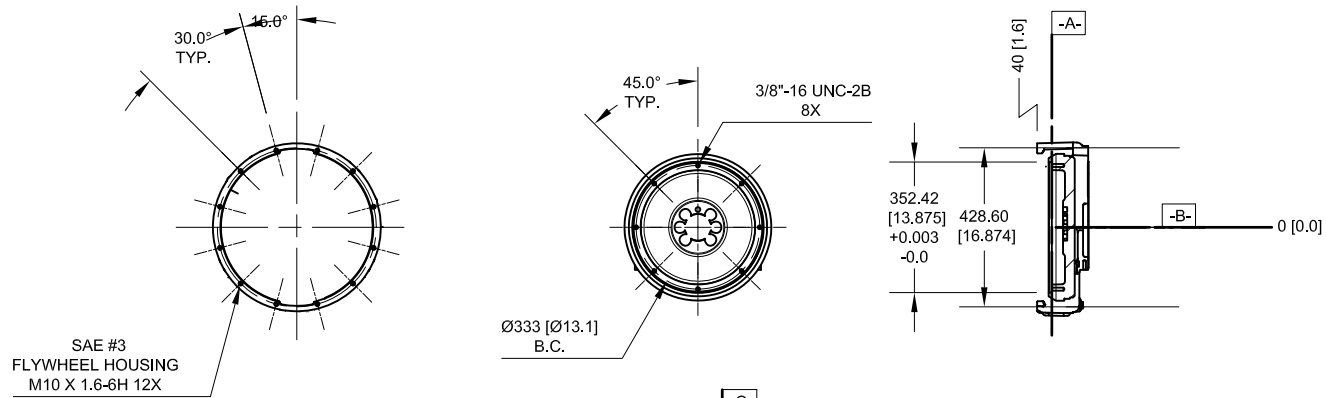
2

1

DO NOT SCALE

FOR ENGINE SPECIFIC OPTIONS  
SEE [www.CLARKEFIRE.com](http://www.CLARKEFIRE.com)

DETAIL DATUM -A-  
BARE FLYWHEEL



DRAWING SUBJECT  
TO CHANGE  
WITHOUT NOTICE

THIS DRAWING AND THE INFORMATION HEREON ARE OUR PROPERTY AND MAY BE USED BY OTHERS ONLY AS AUTHORIZED BY US. UNPUBLISHED-ALL RIGHTS RESERVED UNDER THE COPYRIGHT LAWS.		<input type="checkbox"/> YES <input checked="" type="checkbox"/> NO		<b>CLARKE</b>	
CONTROLLED DRAWING		Fire Protection Products, Inc.		NAME	
DRWN MWLEMING		DATE 2/25/2009		INSTALLATION DRAWING, FIRE PUMP ENGINE JU6H TIER 3 MODELS	
ENGR KJKUNKLER		MATERIAL		PART NO. D628	
SCALE NTS		UNITS MM [INCH]		PAGE 2 OF 2	
MACHINE TOLERANCE		FABRICATION TOLERANCE		REV H	
DECIMAL mm Inch		DECIMAL mm Inch		ASSEMBLY	
X ±1.5 ±.06		X ±3 ±.12		SCALE	
XX ±.08 ±.006		XX ±1.5 ±.06		UNITS	
XXX ±.03 ±.003		XXX ±.01 ±.001		MM [INCH]	
XXXX ±.0025 ±.001		XXXX ±.001		PAGE	
ANGULAR: ±.05°		ANGULAR: ±.10°		OF	
				2	

8

7

6

5

4

3

2

1