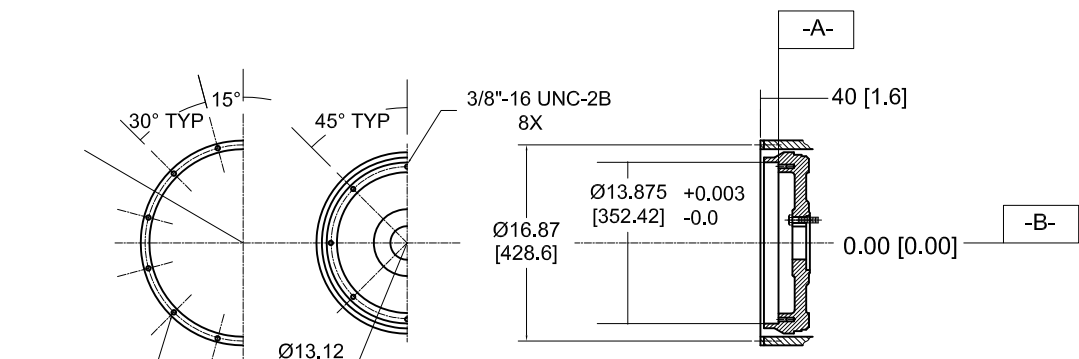


8 7 6 5 4 3 2 1

H
G
F
E
D
C
B
A

H
G
F
E
D
C
B
A

FOR ENGINE SPECIFIC OPTIONS
SEE www.CLARKEFIRE.com

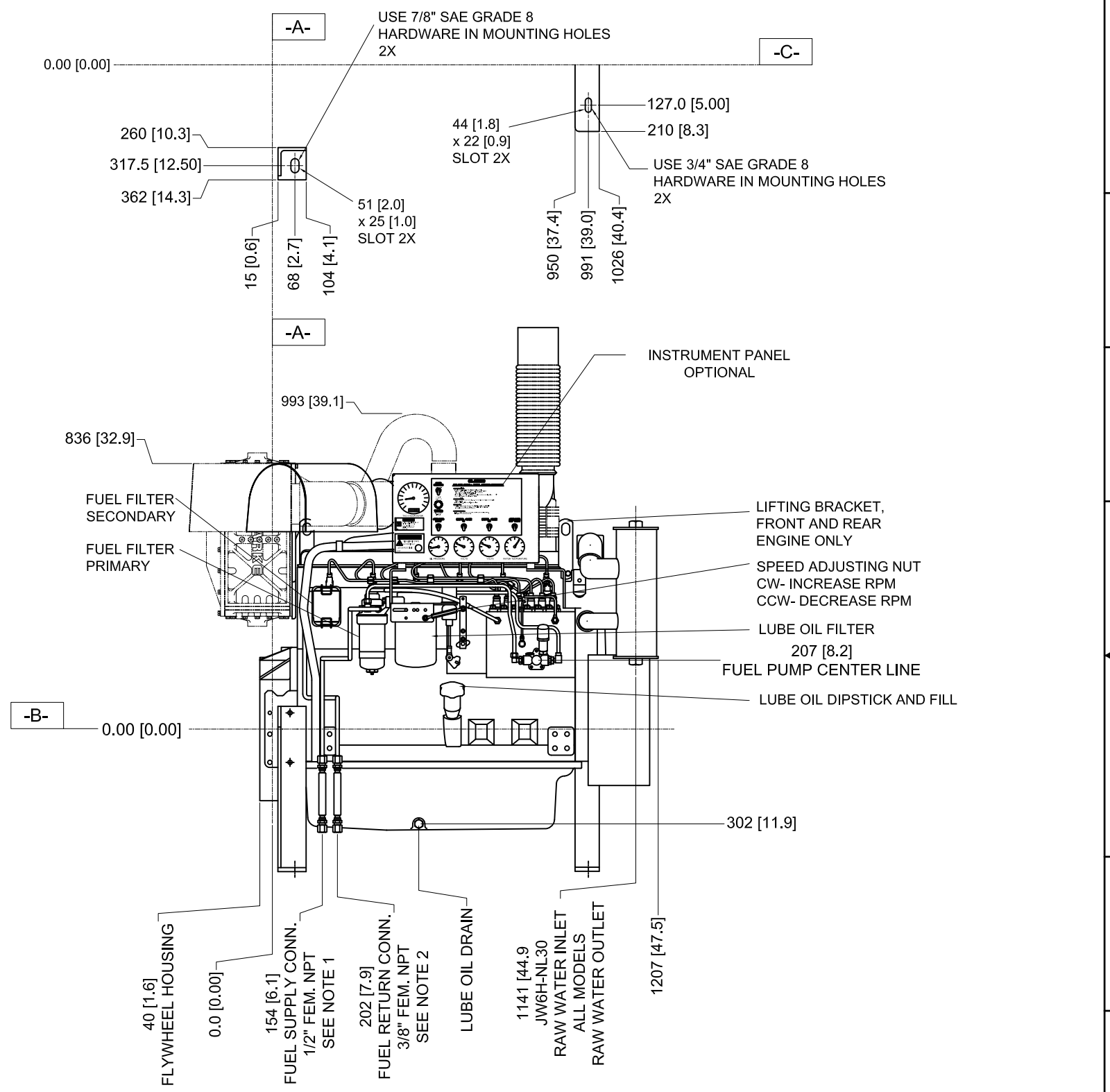


DETAIL DATUM -A-
BARE FLYWHEEL
NO. TEETH = 129

JW6H-NL30 SHOWN
JW6H-NL40,
JW6H-NL50, JW6H-NL60
IN PHANTOM

**DRAWING SUBJECT
TO CHANGE
WITHOUT NOTICE**

- NOTES:
1. FUEL SUPPLY PIPING FROM TANK TO ENGINE SHOULD BE 1/2" MINIMUM PIPE DIAMETER.
2. FUEL RETURN PIPING FROM ENGINE TO TANK SHOULD BE 3/8" MINIMUM PIPE DIAMETER.



<small>THIS DRAWING AND THE INFORMATION HEREON ARE OUR PROPERTY AND MAY BE USED BY OTHERS ONLY AS AUTHORIZED BY US. UNPUBLISHED—ALL RIGHTS RESERVED UNDER THE COPYRIGHT LAWS.</small>		<input type="checkbox"/> UNCONTROLLED <input checked="" type="checkbox"/> CONTROLLED DRAWING		CLARKE Fire Protection Products, Inc.	
DRWN	S.KORENBLIT	NAME	INSTALLATION DRAWING FIRE PUMP ENGINE		
DATE	03MARCH03	PART NO.	UD119		
ENGR	K.J.KUNKLER	REV	L		
MATERIAL		SCALE	NTS	UNITS	MM [INCH]
MACHINE TOLERANCES	DECIMAL mm inch X. ±1.5 ±0.0625 X.X ±0.8 ±0.03125 X.XX ±0.3 ±0.0125 ANGULAR: ±0.5°	SIMILAR TO	D495		
		PAGE	2	OF	2

8 7 6 5 4 3 2 1