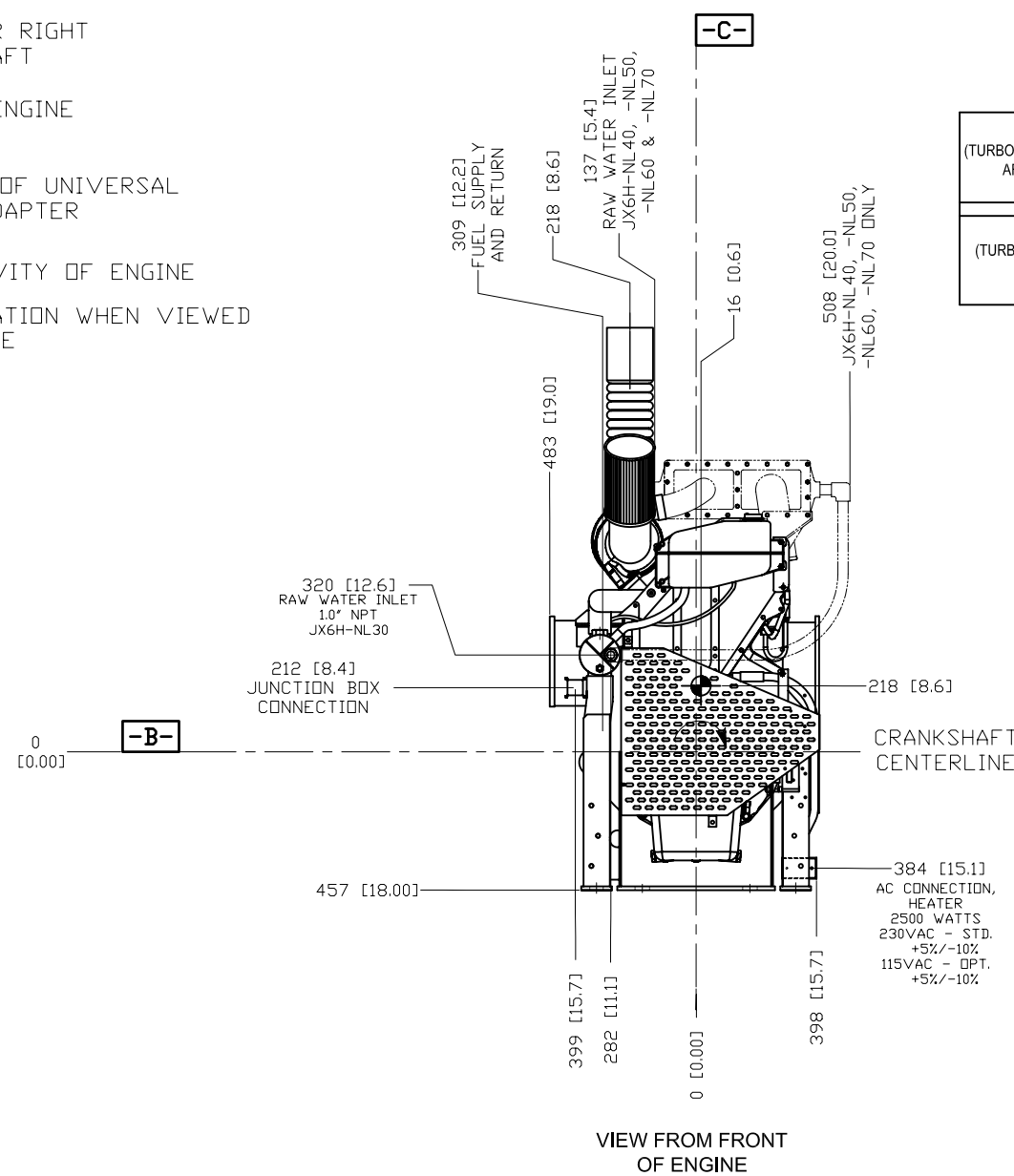


DATUMS:

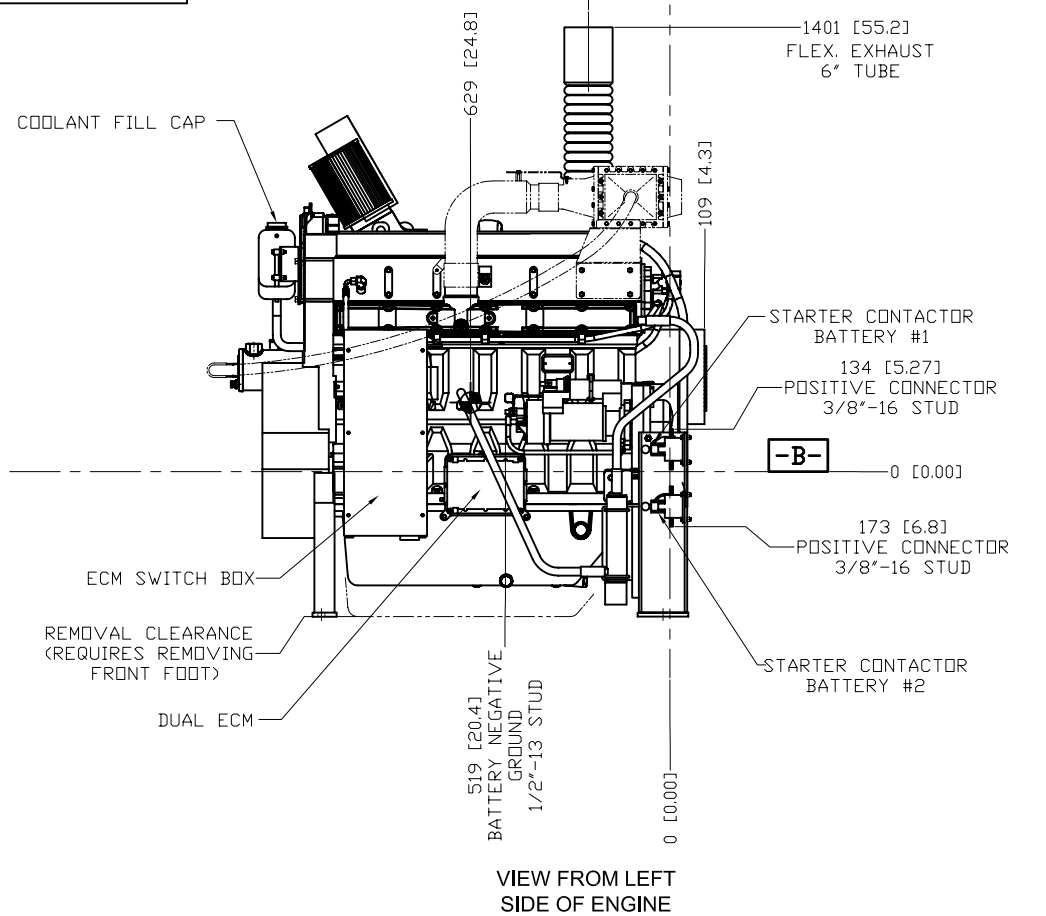
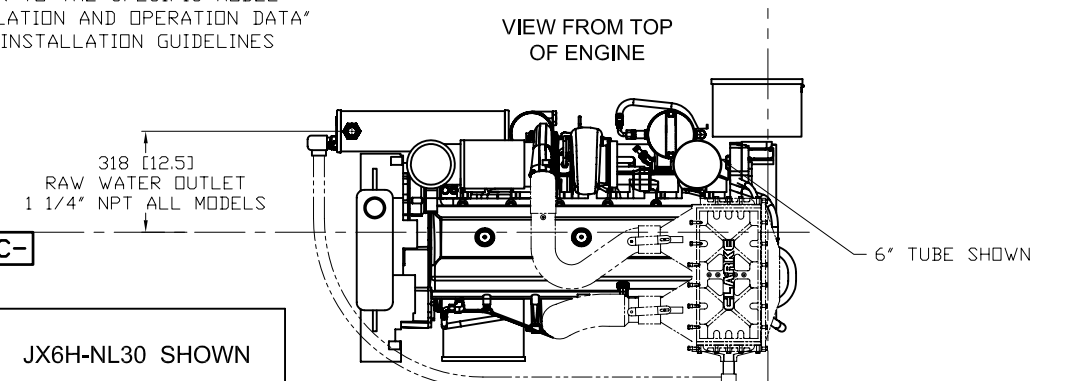
- A- - MOUNTING FACE OF FLYWHEEL
- B- - ENGINE CRANKSHAFT HORIZONTAL CENTERLINE
- C- - ENGINE CRANKSHAFT VERTICAL CENTERLINE
- D- - PUMP OR RIGHT ANGLE GEAR SHAFT HORIZONTAL CENTERLINE
- E- - END OF PUMP OR RIGHT ANGLE GEAR SHAFT
- F- - REAR FACE OF ENGINE HALF FALK HUB
- G- - MOUNTING FACE OF UNIVERSAL DRIVE SHAFT ADAPTER
- ⊙ - CENTER OF GRAVITY OF ENGINE
- ↻ - CLOCKWISE ROTATION WHEN VIEWED FRONT OF ENGINE

CAUTION:
ALL PLUMBING MUST BE SUPPORTED
AND/OR ISOLATED SO THAT NO WEIGHT
OR STRESS IS APPLIED TO ANY ENGINE COMPONENT

ATTENTION
REFER TO THE SPECIFIC MODEL
"INSTALLATION AND OPERATION DATA"
FOR INSTALLATION GUIDELINES



"TJWA" (TURBOCHARGED w/ JACKET WATER AFTER COOLING) MODEL	JX6H-NL30 SHOWN
"TRWA" (TURBOCHARGED w/ RAW WATER AFTER COOLING) MODELS	JX6H-NL40, JX6H-NL50 JX6H-NL60, JX6H-NL70 IN PHANTOM



DRAWING SUBJECT TO CHANGE WITHOUT NOTICE

DO NOT SCALE

REV	DESCRIPTION	ECN#	DWN	APVD	DATE
A	ISSUED ENGINEERING DRAWING	1434	MAL	KRW	31JAN08
B	SAE HOUSING WAS A #2	1943	JCA	KRW	13JUL10

THIS DRAWING AND THE INFORMATION HEREON ARE OUR PROPERTY AND MAY BE USED BY OTHERS ONLY AS AUTHORIZED BY US. UNPUBLISHED--ALL RIGHTS RESERVED UNDER THE COPYRIGHT LAWS.

CLARKE
Fire Protection Products, Inc.

CONTROLLED DRAWING

DRWN MALAUER NAME

DATE 28JAN08

ENGR KRWAULIGMAN

MATERIAL

MACHINE TOLERANCES

DECIMAL	mm	inch
X.	±1.5	
XX	±0.8	±0.06
XXX	±0.3	±0.03

ANGULAR: ±0.5°

SIMILAR TO D546

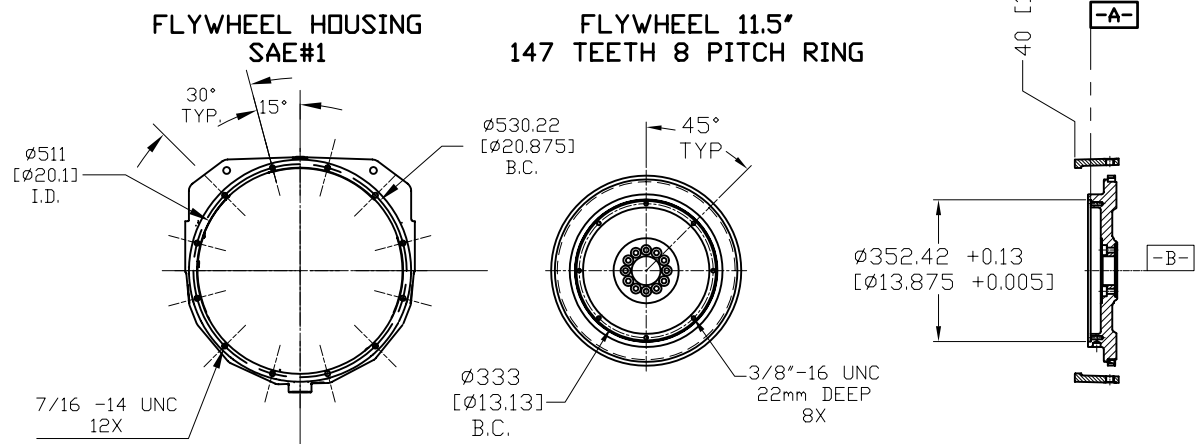
INSTALLATION DRAWING
FIRE PUMP ENGINES
JX-NL30, NL40, NL50, NL60 & NL70

PART NO. UD146 REV B

SCALE NTS UNITS MM [INCH]

PAGE 1 OF 2

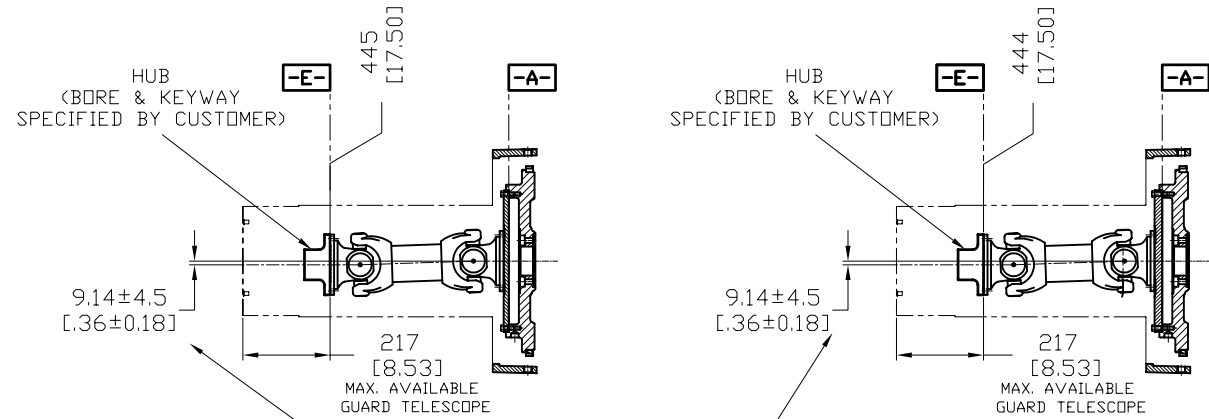
DETAIL DATUM -A-



DETAIL DATUM -E-

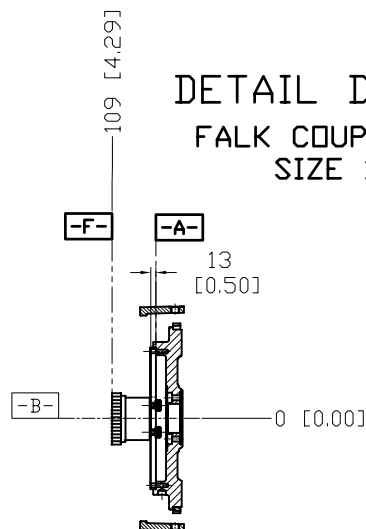
SC 2140 SERIES DRIVE SHAFT
w/ 150 Series Companion Flange
JX6H-NL30, -NL40

SC 2155 SERIES DRIVE SHAFT
w/ 180-8M Series Companion Flange
JX6H-NL50, -NL60, -NL70



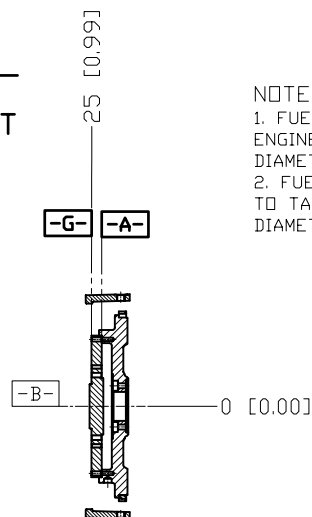
THE ENGINE CRANKSHAFT MAY BE PARALLEL OFFSET FROM THE PUMP SHAFT 0.36" RIGHT OR LEFT. REFER TO THE ENGINE MANUAL FOR ALIGNMENT.

DETAIL DATUM -F-
FALK COUPLING DRIVE
SIZE 1090T10



DETAIL DATUM -G-
UNIVERSAL DRIVE SHAFT
ADAPTER

FLANGE SERIES NO.	HARDWARE REQUIRED
180-10M	M16-2 X 2" LONG 10X
225-8M	M16-2 X 2" LONG 8X

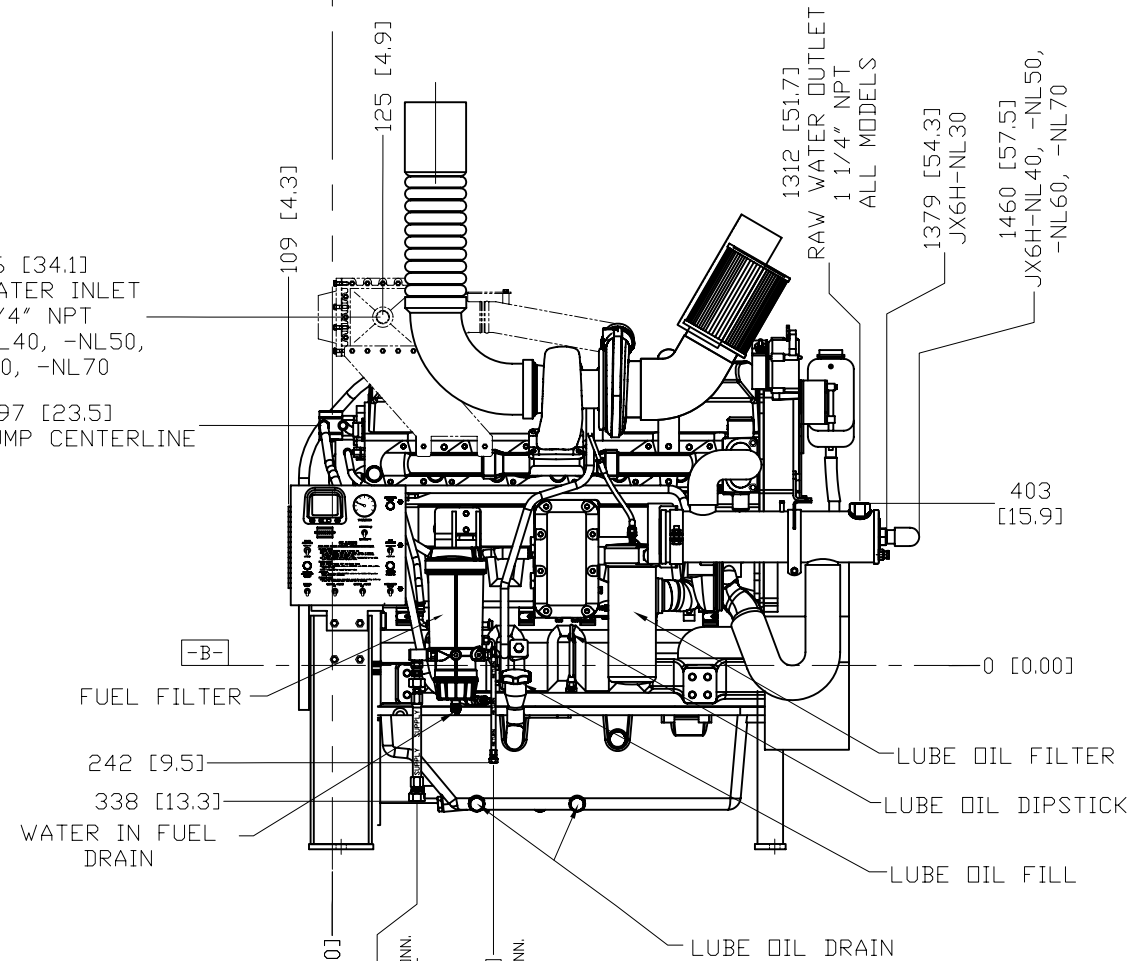


USE 7/8" MOUNTING HARDWARE (GRADE 8, CLASS 10.9 RECOMMENDED) 2X

USE 3/4" MOUNTING HARDWARE (GRADE 8, CLASS 10.9 RECOMMENDED) 2X

866 [34.1] RAW WATER INLET 1 1/4" NPT JX6H-NL40, -NL50, -NL60, -NL70

597 [23.5] FUEL PUMP CENTERLINE



- NOTES:
1. FUEL SUPPLY PIPING FROM TANK TO ENGINE SHOULD BE 3/4" MINIMUM PIPE DIAMETER.
2. FUEL RETURN PIPING FROM ENGINE TO TANK SHOULD BE 1/2" MINIMUM PIPE DIAMETER.

<p>THIS DRAWING AND THE INFORMATION HEREON ARE OUR PROPERTY AND MAY BE USED BY OTHERS ONLY AS AUTHORIZED BY US. UNPUBLISHED--ALL RIGHTS RESERVED UNDER THE COPYRIGHT LAWS.</p>		<p>CLARKE Fire Protection Products, Inc.</p>	
<p>CONTROLLED DRAWING</p>		<p>NAME</p>	
<p>DRWN MALAUER</p>		<p>DATE 28 JAN 08</p>	
<p>MACHINE TOLERANCES</p>		<p>ENGR KRWAULIGMAN</p>	
<p>DECIMAL mm inch</p>		<p>MATERIAL</p>	
<p>X. ±1.5</p>		<p>PART NO. UD146</p>	
<p>XX ±0.2 ±0.06</p>		<p>SCALE NTS</p>	
<p>XXX ±0.3 ±0.03</p>		<p>UNITS MM [INCH]</p>	
<p>ANGULAR: ±0.5°</p>		<p>PAGE 2 OF 2</p>	
<p>SIMILAR TO D546</p>		<p>REV B</p>	