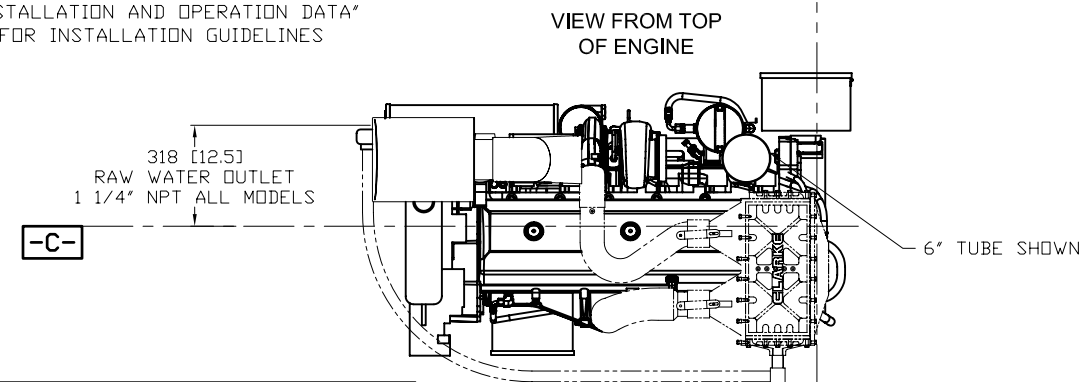
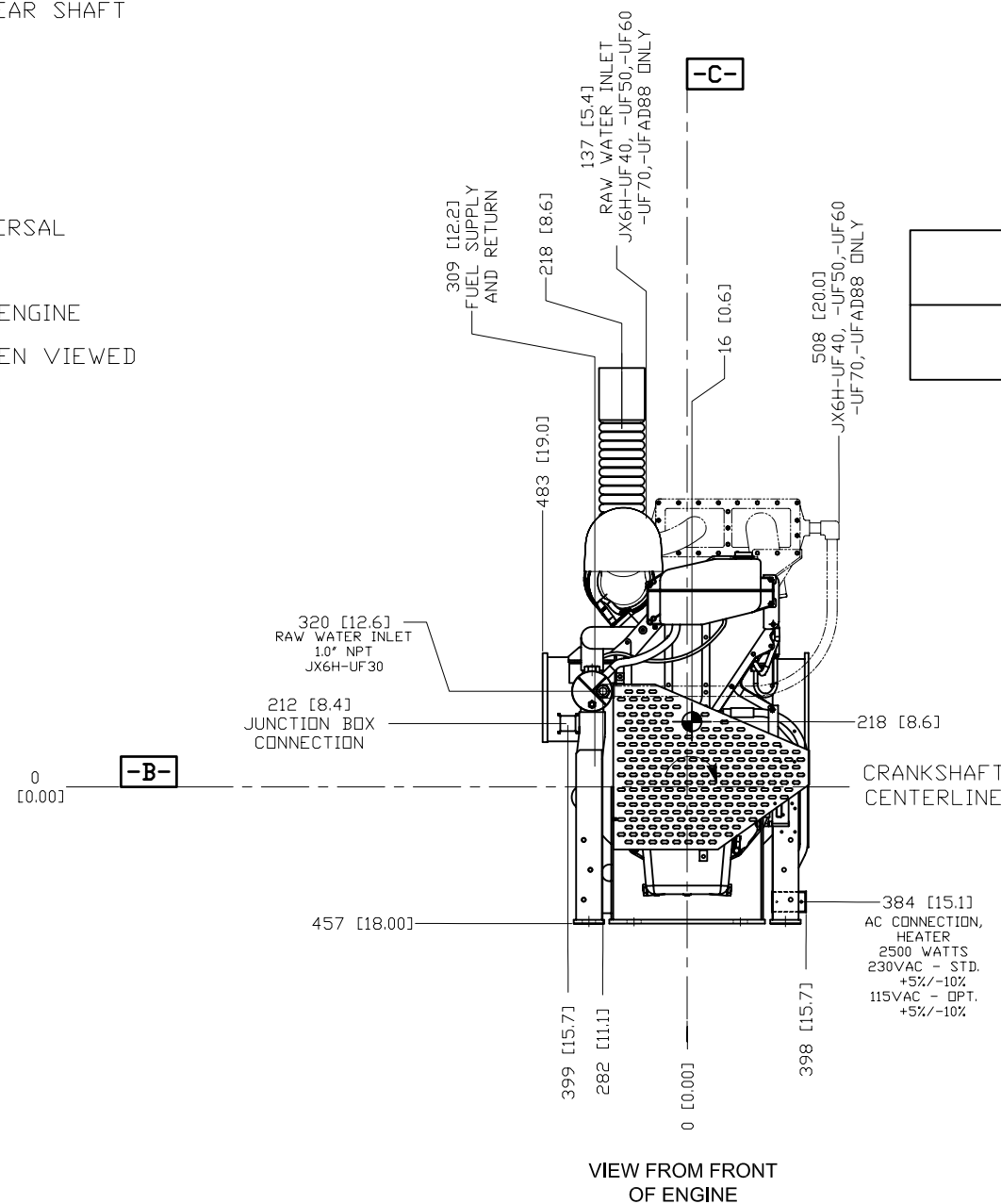


DATUMS:

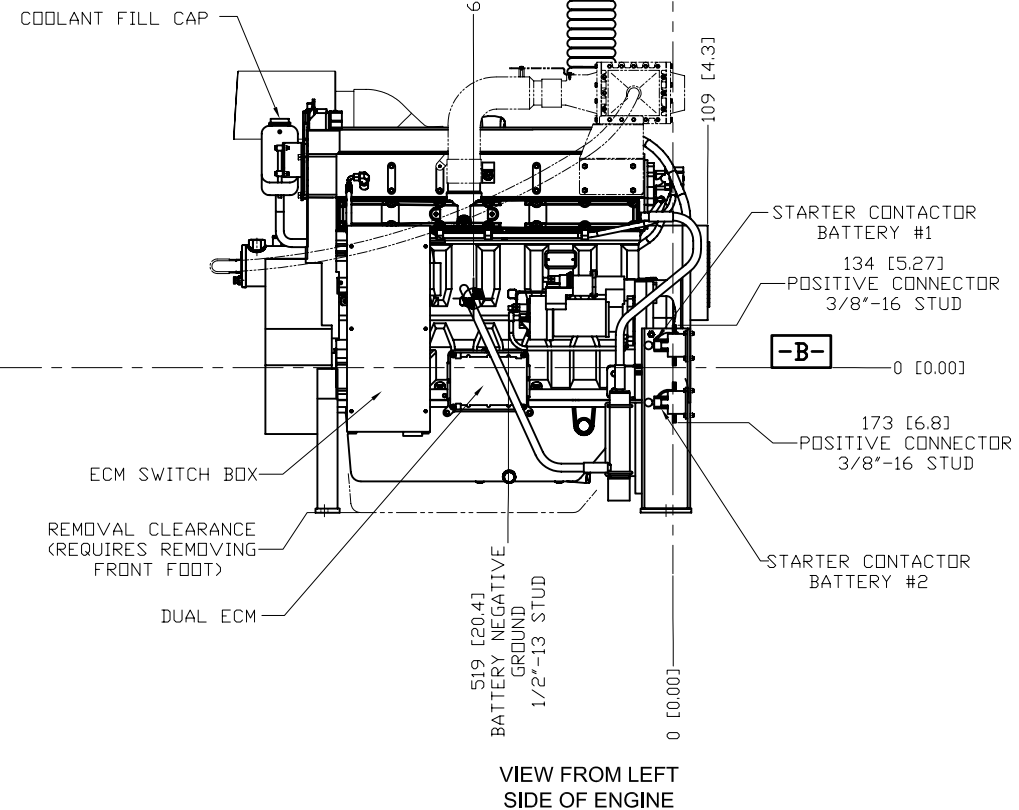
- A- - MOUNTING FACE OF FLYWHEEL
- B- - ENGINE CRANKSHAFT HORIZONTAL CENTERLINE
- C- - ENGINE CRANKSHAFT VERTICAL CENTERLINE
- D- - PUMP OR RIGHT ANGLE GEAR SHAFT HORIZONTAL CENTERLINE
- E- - END OF PUMP OR RIGHT ANGLE GEAR SHAFT
- F- - REAR FACE OF ENGINE HALF FALK HUB
- G- - MOUNTING FACE OF UNIVERSAL DRIVE SHAFT ADAPTER
- ⊙ - CENTER OF GRAVITY OF ENGINE
- ↻ - CLOCKWISE ROTATION WHEN VIEWED FRONT OF ENGINE

CAUTION:
ALL PLUMBING MUST BE SUPPORTED AND/OR ISOLATED SO THAT NO WEIGHT OR STRESS IS APPLIED TO ANY ENGINE COMPONENT

ATTENTION
REFER TO THE SPECIFIC MODEL "INSTALLATION AND OPERATION DATA" FOR INSTALLATION GUIDELINES



JX6H-UF30 SHOWN IN PHANTOM
JX6H-UF 40, -50, -60, -70, SHOWN



DRAWING SUBJECT TO CHANGE WITHOUT NOTICE

DO NOT SCALE

REV	DESCRIPTION	ECN#	DWN	APVD	DATE
A	ISSUED ENGINEERING DRAWING	1158	JJW	[Signature]	20DEC06
B	ADDED AIR FILTER DRIP SHEILD, ADDED ENGINE ROTATION NOTE	1263	MWL	[Signature]	04APR07
C	(P.2) DISTANCE BETWEEN ENGINE FEEL BOLT HOLES WAS 1082	1408	ASC	[Signature]	29NOV07
D	MODIFIED DRAWING FORMAT	1408	MWL	[Signature]	14JAN08
E	REMOVED OPTIONS FROM PAGE 2 AND UPDATED AIR FILTER	1806	RJT	[Signature]	13JAN10
F	SAE HOUSING WAS # 2	1943	SK	[Signature]	08JUL10

THIS DRAWING AND THE INFORMATION HEREON ARE OUR PROPERTY AND MAY BE USED BY OTHERS ONLY AS AUTHORIZED BY US. UNPUBLISHED--ALL RIGHTS RESERVED UNDER THE COPYRIGHT LAWS.		
<input type="checkbox"/> YES <input checked="" type="checkbox"/> NO CONTROLLED DRAWING		
MACHINE TOLERANCES DECIMAL mm inch X. ±1.5 XX ±0.2 ±0.06 XXX ±0.3 ±0.03 ANGULAR: ±0.5° SIMILAR TO		

DRWN	JWJTKIEWICZ
DATE	20DEC06
ENGR	K.J.KUNKLER
MATERIAL	

CLARKE

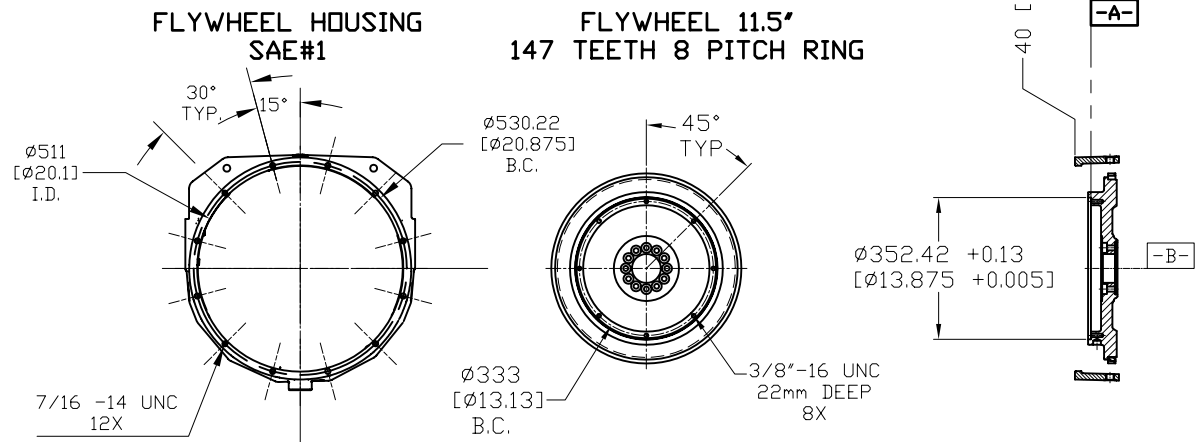
Fire Protection Products, Inc.

NAME		INSTALATION DRAWING	
FIRE PUMP ENGINES		JX6H-UF 30, -UF 40, -UF 50,	
JX6H-UF 60, -UF 70		REV	
PART NO.		UD136	
SCALE	UNITS	PAGE	OF
NTS	MM [INCH]	1	2

FOR ENGINE SPECIFIC OPTIONS
SEE www.CLARKEFIRE.com

USE 7/8" MOUNTING HARDWARE
(GRADE 8, CLASS 10.9 RECOMMENDED)
2X

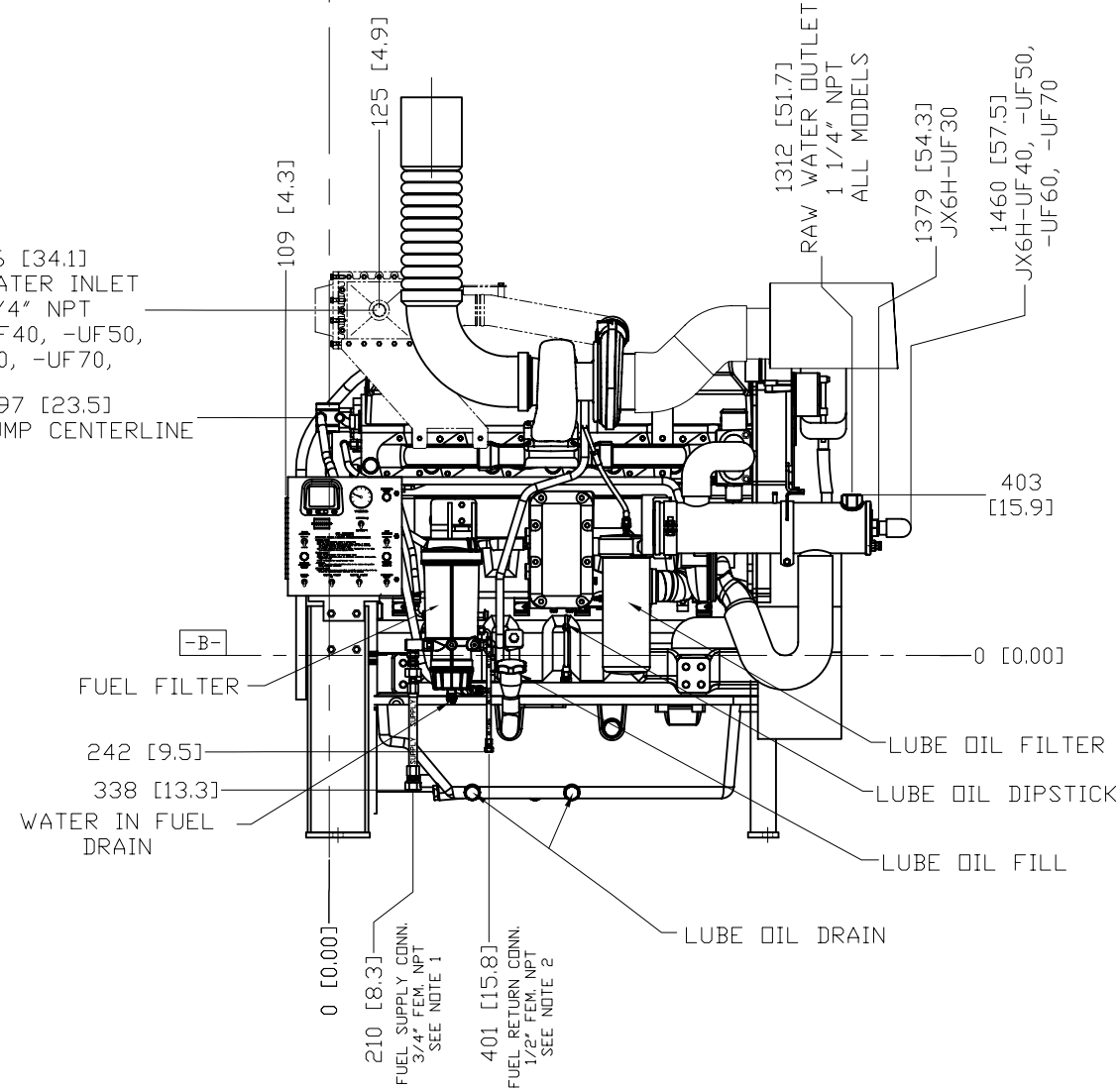
USE 3/4" MOUNTING HARDWARE
(GRADE 8, CLASS 10.9 RECOMMENDED)
2X



866 [34.1]
RAW WATER INLET
1 1/4" NPT
JX6H-UF40, -UF50,
-UF60, -UF70,

597 [23.5]
FUEL PUMP CENTERLINE

FUEL FILTER
242 [9.5]
338 [13.3]
WATER IN FUEL
DRAIN



NOTES:
1. FUEL SUPPLY PIPING FROM TANK TO
ENGINE SHOULD BE 3/4" MINIMUM PIPE
DIAMETER.
2. FUEL RETURN PIPING FROM ENGINE
TO TANK SHOULD BE 1/2" MINIMUM PIPE
DIAMETER.

THIS DRAWING AND THE INFORMATION HEREON ARE OUR PROPERTY AND MAY BE USED BY OTHERS ONLY AS AUTHORIZED BY US. UNPUBLISHED--ALL RIGHTS RESERVED UNDER THE COPYRIGHT LAWS.		<input type="checkbox"/> YES <input checked="" type="checkbox"/> NO CONTROLLED DRAWING		CLARKE Fire Protection Products, Inc.	
MACHINE TOLERANCES DECIMAL mm inch X. ±1.5 XX ±0.8 ±0.06 XXX ±0.3 ±0.03 ANGULAR: ±0.5° SIMILAR TO		DRWN JWOJTKIEWICZ DATE 20DEC06 ENGR K.J.KUNKLER MATERIAL		NAME INSTALLATION DRAWING FIRE PUMP ENGINE JX-UF30, UF40, UF50, UF60, UF70	
		PART NO. UD136		REV F	
		SCALE NTS UNITS MM [INCH]		PAGE 2 OF 2	