

JU4H-UFH8

Stationary Fire Pump Engine Driver

EMISSION DATA

EPA 40 CFR Part 60

4 Cylinders
 Four Cycle
 Lean Burn
 Turbocharged

500 PPM SULFUR #2 DIESEL FUEL								
RPM	BHP ⁽³⁾	FUEL GAL/HR (L/HR)	GRAMS / HP- HR				EXHAUST	
			NMHC	NOx	CO	PM ⁽⁴⁾	°F (°C)	CFM (m ³ /min)
1760	73	2.1 (7.9)	0.33	5.47	0.34	0.17	794(423)	362 (10)

Notes:

- 1) 4045TF220 Base Engine Model manufactured by John Deere Corporation.
For John Deere Emissions Conformance to EPA 40 CFR Part 60 see Page 2 of 2.
- 2) The Emission Warranty for this engine is provided directly to the owner by John Deere Corporation. A copy of the John Deere Emission Warranty can be found in the Clarke Operation and Maintenance Manual.
- 3) Engines are rated at standard conditions of 29.61in. (7521 mm) Hg barometer and 77°F (25° C) inlet air temperature. (SAE J1349)
- 4) PM is a measure of total particulate matter, including PM₁₀.

CLARKE

FIRE PROTECTION PRODUCTS

3133 East Kemper Road
Cincinnati, OH 45241

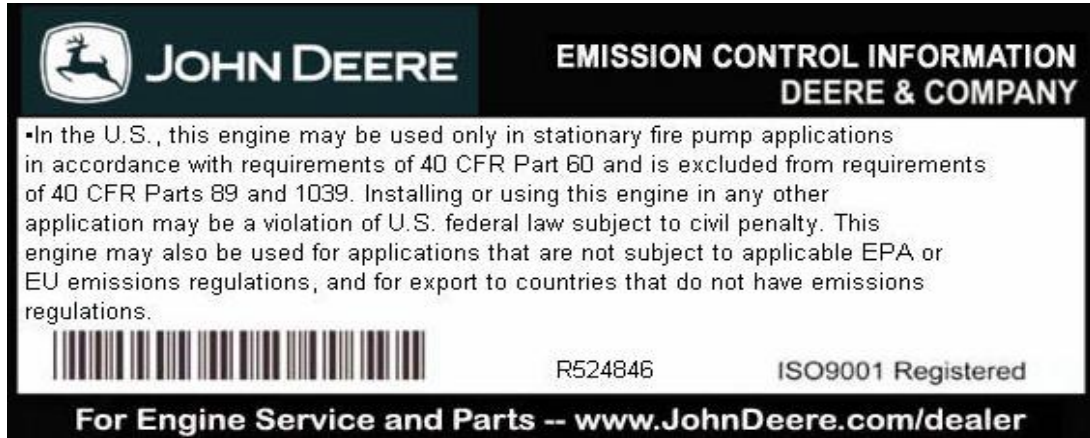


John Deere Power Systems
 3801 W. Ridgeway Ave., PO Box 5100
 Waterloo, Iowa USA 50704-5100

31 October 2007

Subject: Fire Pump Ratings – Conformance to EPA 40 CFR Part 60 (NSPS requirements)

All John Deere stationary fire pump engines conform to the requirements of 40 CFR Part 60. All such engines include an emission label, stating the engine conforms to the requirements of 40 CFR Part 60. An example of the emission label is show below:



This label applies to all of the following engine models, sold to Clarke Fire Protection, for use in stationary fire pump applications:

John Deere Engine Model
4045DF120
4045DF159
4045TF252
4045TF254
4045TF220
6068TF252
6068TF254
6068HF252
6068HF254
6068HF120
6068TF220
6081AF001
6081HF001
6125AF001
6125HF070

All engines conforming to 40 CFR Part 60 (identified by emission label, as shown above) are covered under the emissions warranty of 40 CFR Part 89.

Sincerely,

Kyle J. Tingle
 Regional Sales Manager, JDPS