

4

3

2

1

D

D

C

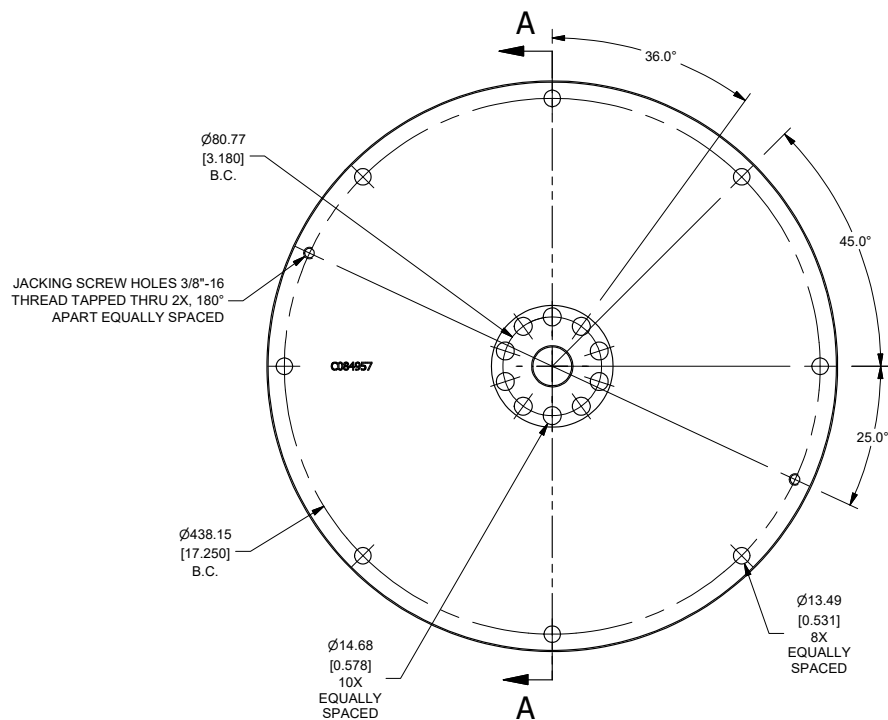
C

B

B

A

A



JACKING SCREW HOLES 3/8\"-16
THREAD TAPPED THRU 2X, 180°
APART EQUALLY SPACED

C084957

Ø80.77
[3.180]
B.C.

Ø438.15
[17.250]
B.C.

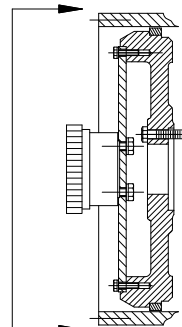
Ø14.68
[0.578]
10X
EQUALLY
SPACED

Ø13.49
[0.531]
8X
EQUALLY
SPACED

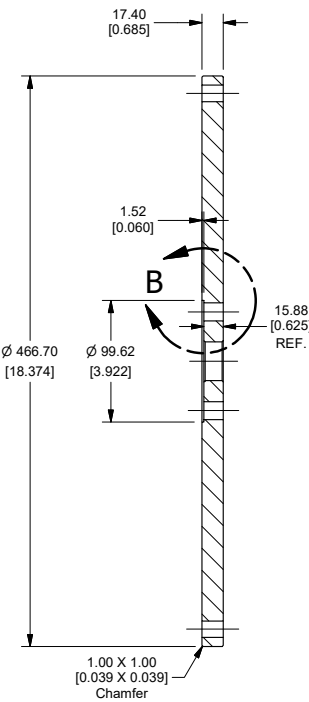
36.0°

45.0°

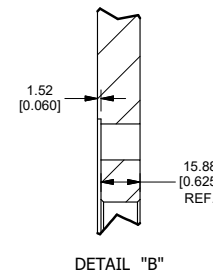
25.0°



TYPICAL DRIVE DISK
MOUNTING OF FALK HUB



SECTION A-A



DETAIL "B"

NOTES:

1. FALK HUB MUST PILOT INTO DRIVE DISC.
2. USE ALL HI-STENGTH GRADE 8 (SAE) MOUNTING HARDWARE OR CLASS 10.9 (METRIC) MOUNTING HARDWARE.
3. JACKSCREW HOLES FOR ADAPTER DISC REMOVAL.

THIS DRAWING AND THE INFORMATION HEREON ARE OUR PROPERTY AND MAY BE USED BY OTHERS ONLY AS AUTHORIZED BY US. INFERRED: ALL RIGHTS RESERVED UNDER THE COPYRIGHT LAWS.			<input type="checkbox"/> UNCONTROLLED <input checked="" type="checkbox"/> CONTROLLED DRAWING		CLARKE Fire Protection Products, Inc.		
MACHINE TOLERANCE DECIMAL mm inch X .X ± 0.5 ± 0.06 X.X ± 0.8 ± 0.03 X.XX ± 0.3 ± 0.03 X.XXX ± 0.02 ± 0.01 X.XXXX ± 0.01 ± 0.001 ANGLUAR ± 0.5°			DRWN: MALAUER DATE: 3/2/2013 ENGR: KRWAULIGMAN		NAME: DRIVE DISC, SAE 14 FLYWHEEL TO FALK 1080T/1090T COUPLING		
FABRICATION TOLERANCE DECIMAL mm inch X ± 1.5 ± 0.12 X.X ± 1.5 ± 0.12 X.XX ± 1.5 ± 0.06 ANGLUAR ± 1.0°			MATERIAL: A36 HRS ASSEMBLY: EC2378		PART NO: C084957W SCALE: NTS UNITS: MM [INCH]		
REV: A						PAGE: 1 OF 1	

4

3

2

1

↑