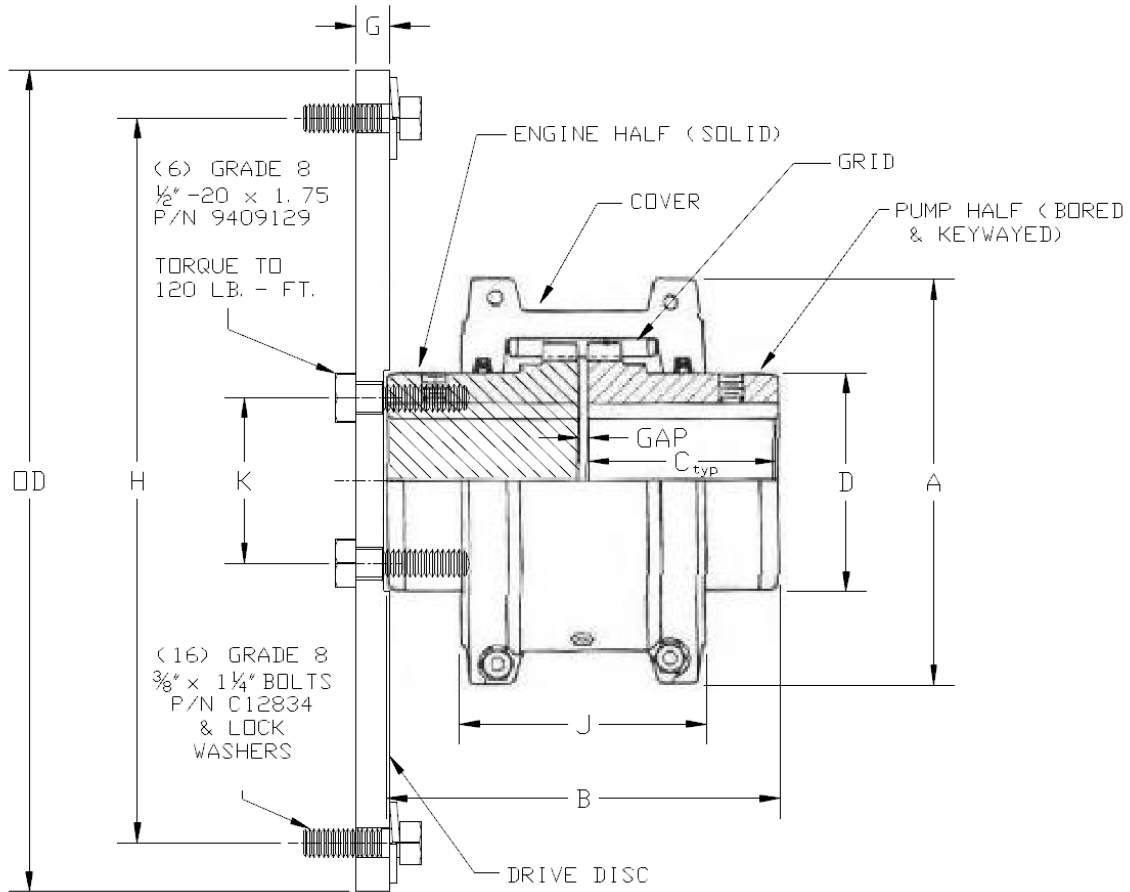
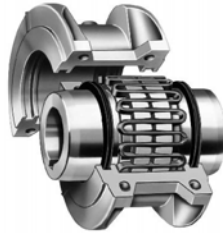


Fire Protection Products, Inc.

Falk "Steelflex" 1070 T10 Coupling with SAE 11.5" Flywheel Coupling Assembly



Dimensional Data

A	B	C	D	G	H	J	K	OD	GAP	Coupling Weight (lbs)	Drive Disc Weight (lbs)	Total Weight (lbs)
6.25	6.12	3.00	3.44	0.435	13.125	3.81	2.600	13.875	0.125	23	18.5	41.5

Notes:

- 1) Unless otherwise specified, all dimensions are in inches.
- 2) For WR^2 & torsional spring rate see 2 of 2.
- 3) Choosing the proper size coupling is based off of a service factor of 1.0 in Table 1 and corresponding engine service factors in Table 2 per Falk catalog 421-110, page 7.

Fire Protection Products, Inc.

**Falk “Steelflex” 1070 T10 Coupling with
SAE 11.5” Flywheel Coupling Assembly**

Torsional Data

WR² value (engine drive disc not included) = 63.18 lb-in.²

(WR² values are based on hubs with no bore: seals, lube plugs, and gaskets are not considered)

