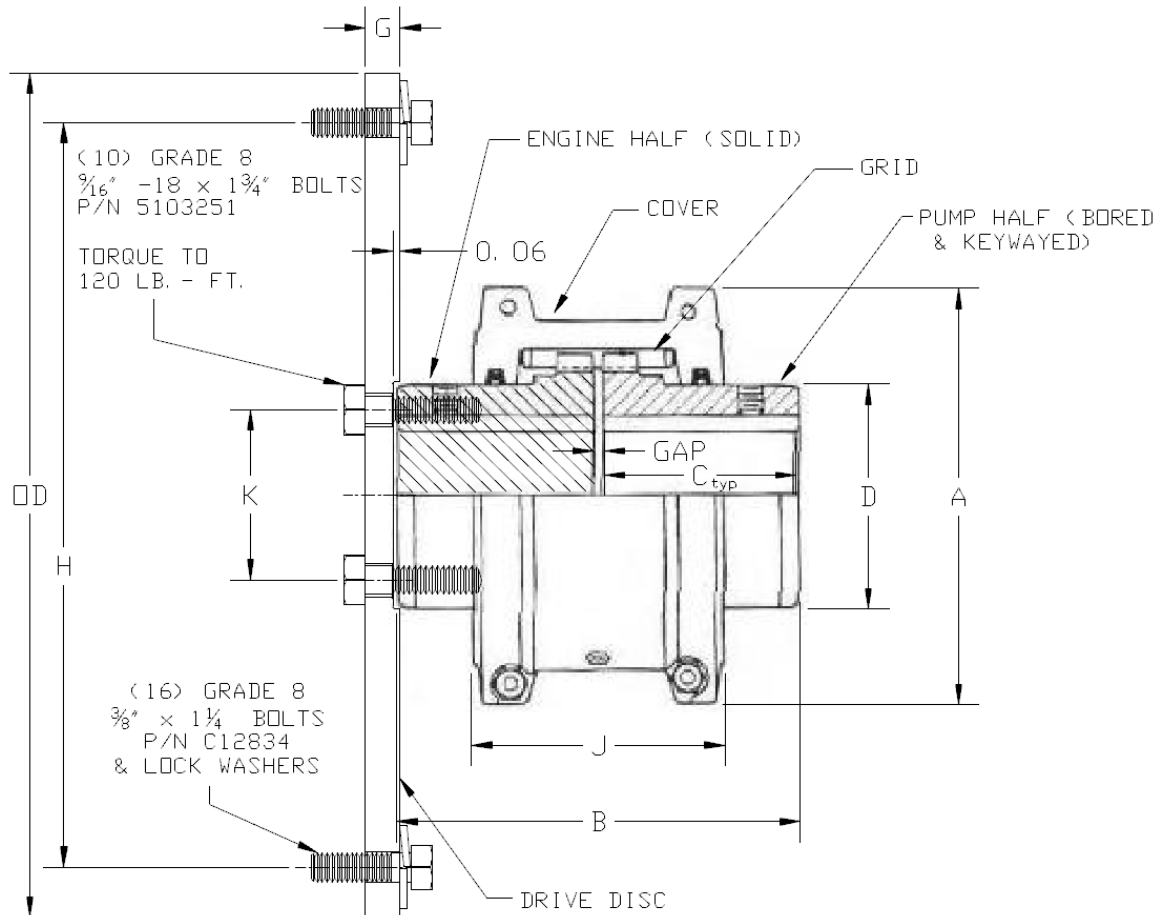
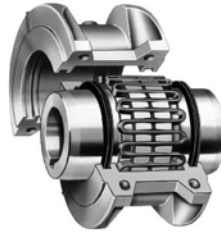


Falk "Steelflex" 1090 T10 Coupling with SAE 11.5" Flywheel Coupling Assembly



Dimensional Data

A	B	C	D	G	H	J	K	OD	GAP	Coupling Weight (lbs)	Drive Disc Weight (lbs)	Total Weight (lbs)
8.31	7.88	3.88	4.88	0.560	13.125	4.81	3.180	13.875	0.125	56	23	79

Notes:

- 1) Unless otherwise specified, all dimensions are in inches.
- 2) For WR^2 & torsional spring rate see 2 of 2.
- 3) Choosing the proper size coupling is based off of a service factor of 1.0 in Table 1 and corresponding engine service factors in Table 2 per Falk catalog 421-110, page 7.

Falk "Steelflex" 1090 T10 Coupling with SAE 11.5" Flywheel Coupling Assembly

Torsional Data

WR² value (engine drive disc not included) = 269 lb-in.²

(WR² values are based on hubs with no bore; seals, lube, and gaskets are not considered)

