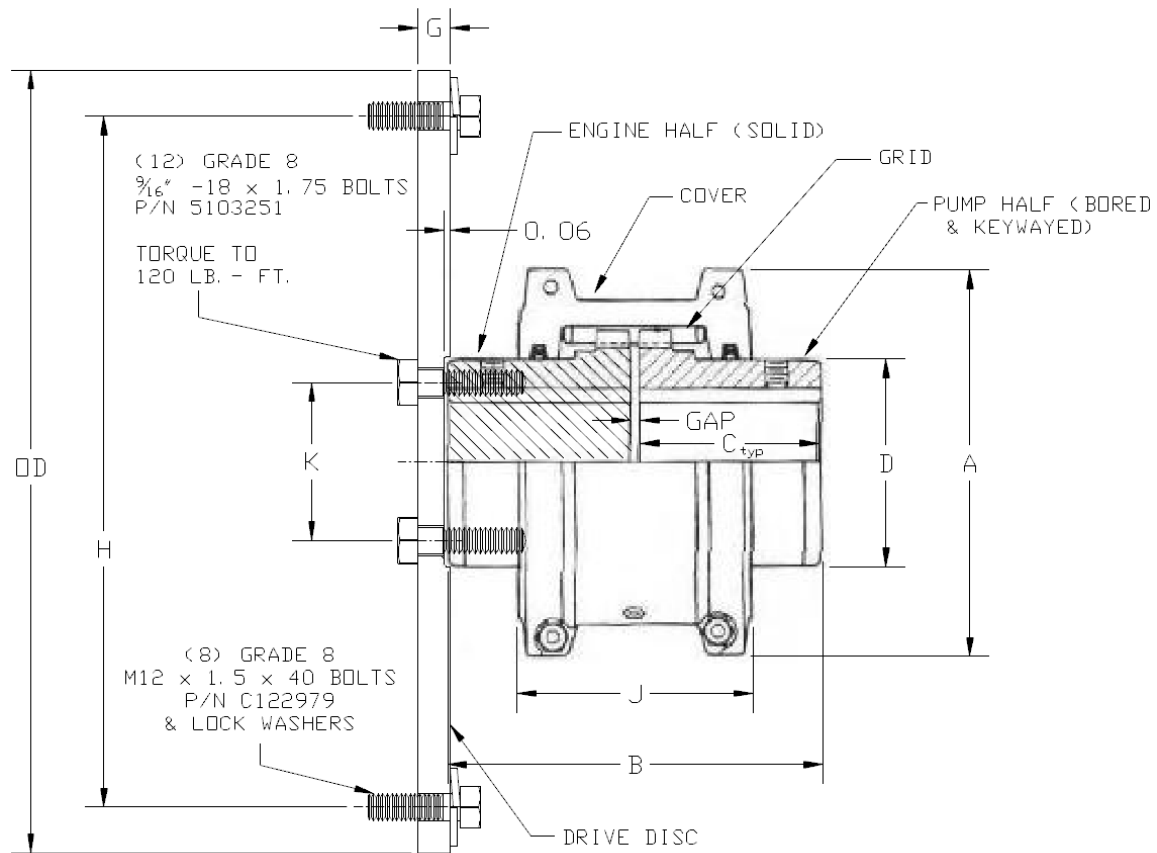
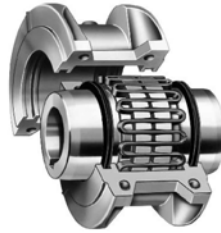


Falk "Steelflex" 1100 T10 Coupling with SAE 14" Flywheel Coupling Assembly



Dimensional Data

| A | B | C | D | G | H | J | K | OD | GAP | Coupling Weight (lbs) | Drive Disc Weight (lbs) | Total Weight (lbs) |
|------|------|------|------|-------|-------|------|-------|--------|-------|-----------------------|-------------------------|--------------------|
| 9.88 | 9.67 | 4.75 | 5.59 | 0.685 | 17.25 | 6.12 | 4.500 | 18.375 | 0.188 | 93 | 50 | 143 |

Notes:

- 1) Unless otherwise specified, all dimensions are in inches.
- 2) For WR^2 & torsional spring rate see 2 of 2.
- 3) Choosing the proper size coupling is based off of a service factor of 1.0 in Table 1 and corresponding engine service factors in Table 2 per Falk catalog 421-110, page 7.

**Falk "Steelflex" 1100 T10 Coupling with
SAE 14" Flywheel Coupling Assembly**

Torsional Data

WR² value (engine drive disc not included) = 609 lb-in.²

(WR² values are based on hubs with no bore; seals, lube, and gaskets are not considered)

