

CUSTOMIZED OPTIONS FOR YOUR FIRE PUMP DRIVER NEEDS



Sound Attenuated Enclosure with Radiator Cooling and Marine Coating

Engine/Enclosure shown is for illustrative purposes only. Check factory for option availability on all Clarke engine models.



Critical Grade 316SS Exhaust Silencers

Rigid customer specifications require flexible solutions. Clarke's engineering team develops robust options for some of the most demanding installations and applications worldwide. From a pneumatic starting system to a full range of alarms & gauges and cooling options, we're hard at work creating solutions for your customer's most complex and demanding projects.

See Reverse Side for Additional Options Available from Clarke

Specifications and information contained in this brochure is subject to change without notice.

GROUP NAME	AVAILABLE OPTIONS
Air Cleaners	UL/FM Single Stage Air Cleaner
	UL/FM Two Stage Air Cleaner
Alarms and/or Gauges	Differential Pressure - Air, Fuel, or Oil
	Temperature - Oil
	Level - Coolant, Oil
	Differential Pressure & Temperature
	Full Alarm/Gauge Package
Battery Kit	AGM Batteries (12 or 24V) with Battery Rack & Cables
	NiCad Batteries (12 or 24V) with Battery Rack & Cables
	Battery Box Option for Added Protection
Cooling Loops	FM Approved 250psi Sea Water compatible
	FM Approved 250 psi 316 Stainless Steel (not available in all models)
	FM Approved 400psi High Pressure
	FM Approved 90/10 CuNi (not available in all models)
Silencers	Industrial, Residential, Critical, or Hospital Grade
	Carbon Steel or 316 Stainless Steel
	With or Without Spark Arrestor
Fuel Hose	ULC/TSSA Steel Braided Stainless Steel Fuel Hose
Driveshaft Guard	Non Sparking Guard
	Powder Coated Steel Containment Guard
Filters	Duplex Fuel Filters (not available in all models)
	Duplex Oil Filters (not available in all models)
Instrument Panel	NEMA 4X/IP66 316 Stainless Steel
	Dual Language Starting Instructions
Paint	Engine Epoxy Coated Paint
	Base, Powder Coat
Secondary Starting	Pneumatic Starter (not available in all models)
	Hydraulic Starter (not available in all models)
Variable Speed	Pressure Limiting Driver - Discharge and/or Suction Control
Tropicalization	NEMA 4X/IP66 316 Stainless Steel Instrument Panel
	NEMA 4X/IP66 316 SS Enclosed Start Contactors
	Fungus Proof Starter & Alternator (316 Stainless Steel Gauge Panel, if Applicable)
	Marine Corrosion Protective Coating (Radiator engines only)
Enclosure	Sound Attenuated Enclosure
Base	Lube Oil Heater
	Drip Rim (pump only)
	Base Extension for HSC or VT
	Oil Drain Extension
Crating	Air Freight Prep
	Export Crating



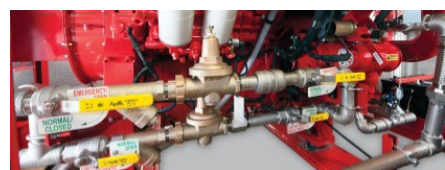
Two Stage Air Cleaners



Protective Battery Box



Full Alarm/Gauge Package



Sea Water Cooling Loop



Pressure Limiting Driver



NEMA 4X/IP66 Stainless Steel Instrument Panel