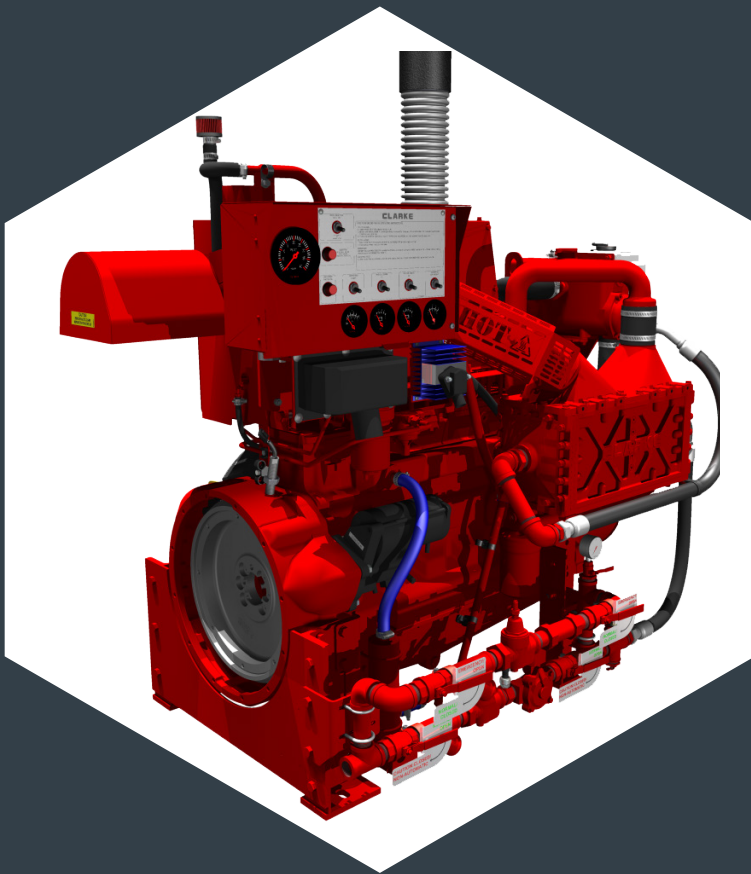


JU6H

1760-3000 RPM

160-300 BHP / 119-224 kW



NEW MODELS

USA BUILT

- JU6H-UFAATO
- JU6H-UFAAT2
- JU6H-UFAAT8
- JU6H-UF94

SCOTLAND BUILT

- JU6H-UFKAT8
- JU6H-UFKATO
- JU6H-UFKAT2
- JU6H-UF94

MODEL OVERVIEW

Expanding upon our existing line of JU6H engines, Clarke is proud to introduce 4 new JU6H engine models, assembled by Clarke in Cincinnati, OH and Coatbridge, Scotland.

This entire series meets NFPA 20 requirements and is UL Listed and FM Approved.

APPLICATIONS

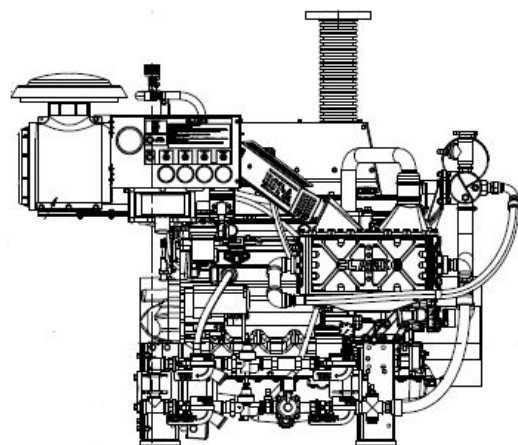
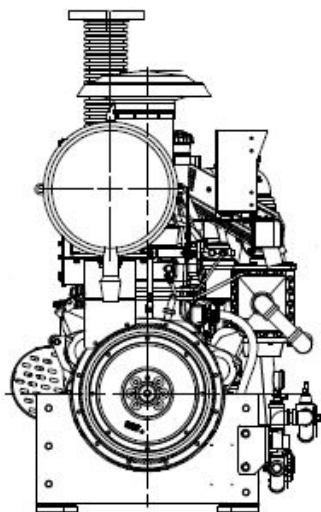
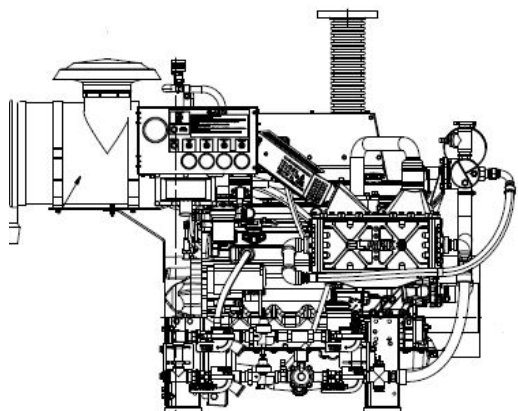
Clarke JU6H models are designed for high volume pumping applications such as:

- Distribution centers
- Warehouses
- High rise office buildings
- Hotels
- Airports



MODEL	RATED SPEED (BHP / kW)						
	1760	1900	2100	2350	2600	2800	3000
UF34						160 119	175 131
UF54						216 161	216 161
UF84						259 193	275 205
UFAAT8* / UFKAT8*	265 198	273 203.5					
UFAATO* / UFKATO*			293 218.5	295 220			
UFAAT2* / UFKAT2*				295 220	291 217		
UF94*						295 220	300 224

* Indicates new model



EQUIPMENT	STANDARD	OPTIONAL
Air Cleaner	Direct Mounted, Washable, Indoor Service with Drip Shield	Disposable, Drip Proof, Indoor Service Outdoor Type, Single or Two Stage (Cyclonic)
Alarms	Overspeed Alarm & Shutdown, Low Oil Pressure, Low & High Coolant Temperature, Low Raw Water Flow, High Raw Water Temperature	Low Coolant Level, Low Oil Level, Oil Filter Differential Pressure, Fuel Filter Differential Pressure, Air Filter Restriction
Alternator	12V-DC, 42 Amps with Poly-Vee Belt and Guard	24V-DC, 40 Amps with Poly-Vee Belt and Guard
Coupling	Bare Flywheel	Driveshaft and Guard: AAT0, AAT8 -CDS50-SC; UF94 - SC61A-L at 2800 & 3000 RPM; AAT0, AAT2 - SC81A at 2350 & 2600 RPM
Engine Heater	115V-AC, 1360 Watt	230V-AC, 1360 Watt
Exhaust Flex Connection	SS Flex, 150# ANSI Flanged Connection, 5"; AAT0, AAT2, UF94: SS Flex, 150# ANSI Flanged Connection, 6"	SS Flex, 150# ANSI Flanged Connection, 6"; AAT0, AAT2, UF94: SS Flex, 150# ANSI Flanged Connection, 8"
Exhaust Protection	Metal Guards on Manifolds and Turbo-charger	
Flywheel Housing	SAE #3	
Flywheel Power Take Off	11.5" SAE Industrial Flywheel; Connection	
Fuel Connections	Fire Resistant, Flexible, Supply and Return Lines	SS, Braided cUL Listed, Supply and Return Lines
Fuel Filter	Primary Filter and Priming Pump	
Fuel Injection System	Direct Injection	
Fuel Solenoid	12V-DC Energized to Stop (ETS)	24V-DC Energized to Stop (ETS)
Governor, Speed	Constant Speed, Mechanical	
Heat Exchanger	Tube and Shell, 60 PSI (4 BAR), NPT(F) Connections - Sea Water Compatible	
Instrument Panel	NEMA Type 2, Powder Coated Steel Construction, English and Metric, Tachometer, Hourmeter, Water Temperature, Oil Pressure and (2) Voltmeters	316 Stainless Steel NEMA 4X/IP66
Junction Box	Integral with Instrument Panel; For DC Wiring Interconnection to Engine Controller	
Lube Oil Cooler	Engine Water Cooled, Plate Type	
Lube Oil Filter	Full Flow with By-Pass Valve	
Lube Oil Pump	Gear Driven, Gear Type	
Manual Start Control	On Instrument Panel with Control Position Warning Light	
Overspeed Control	Electronic with Reset and Test on Instrument Panel	
Raw Water Cooling Loop - w/Alarms	Galvanized	Seawater, All 316SS, High Pressure
Raw Water Solenoid Operation	Automatic from Fire Pump Controller and from Engine Instrument Panel (for Horizontal Fire Pump Applications)	Not Supplied (for Vertical Turbine Fire Pump Applications)
Run - Stop Control	On Instrument Panel with Control Position Warning Light	
Starters	Two (2) 12V-DC	Two (2) 24V-DC
Throttle Control	Adjustable Speed Control, Tamper Proof	

MODEL NOMENCLATURE

JU6H-UFKAT2

