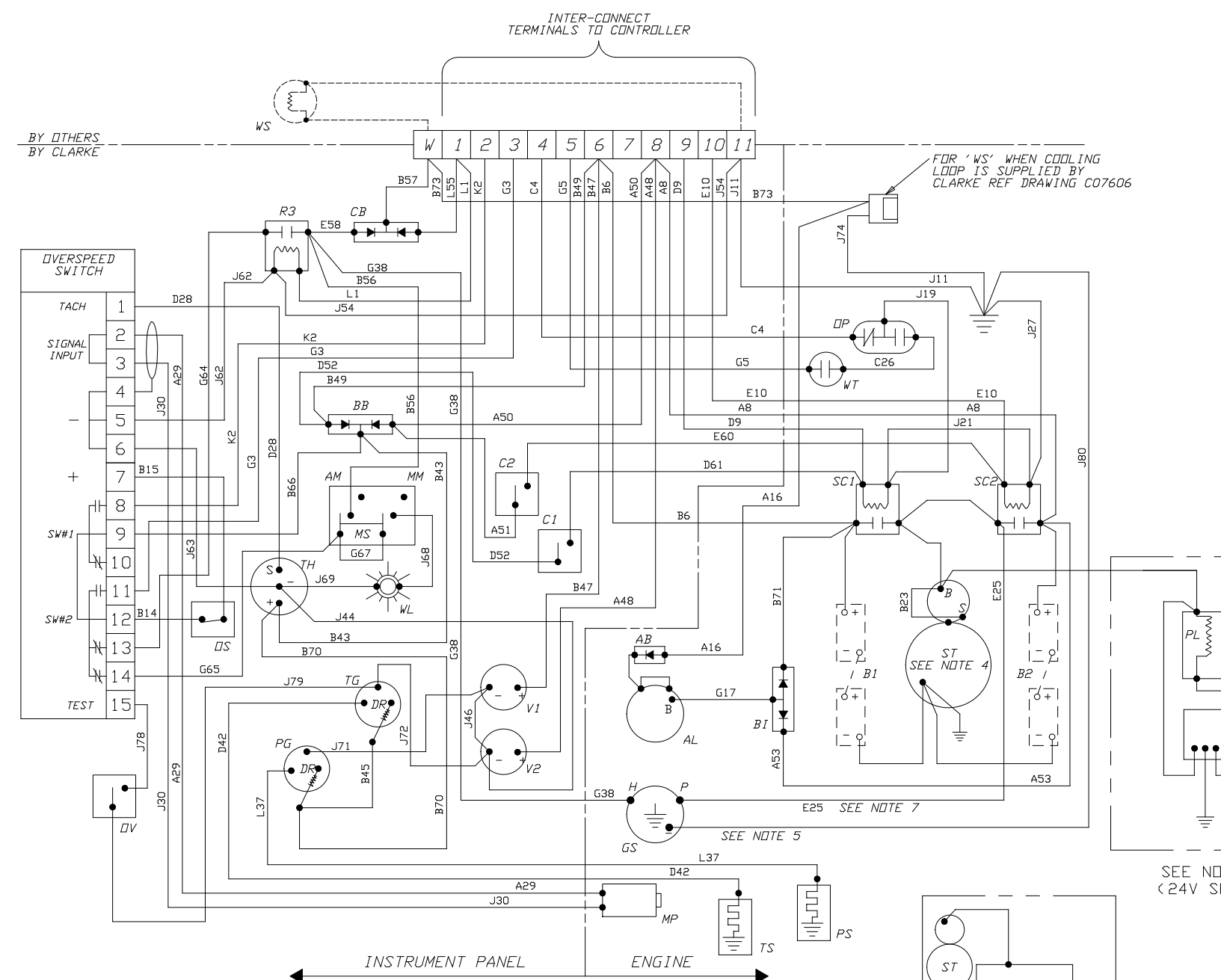


SYM	REVISION	ECN#	DRWN	APVD	DATE
P	ADDED 12V & 24V WIRING DETAILS FOR TURBOCHARGED MODELS	242	SK	KTE	27MAY03

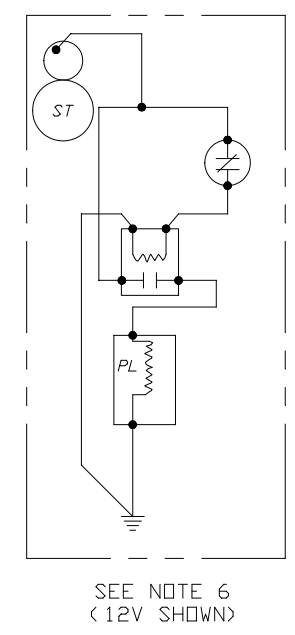
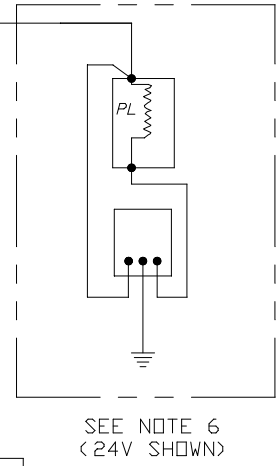
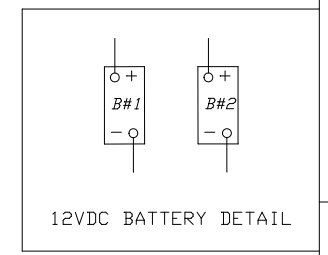


LEGEND

AB - ALTERNATOR BRIDGE	PL - TURBO PRELUBE SOLENOID
AL - ALTERNATOR	PS - PRESSURE SENDER(LUBE)
AM - AUTOMATIC MODE POSITION	R3 - REMOTE RUN RELAY N.O.
B1 - BATTERY #1	SC1 - STARTER CONTACTOR BATT#1
B2 - BATTERY #2	SC2 - STARTER CONTACTOR BATT#2
BB - BATTERY BRIDGE	SI - STARTER ISOLATOR
BI - BATTERY ISOLATOR	ST - STARTER
C1 - CRANK(MANUAL) SWITCH-BATT#1	SW#1 - CRANK TERMINATE
C2 - CRANK(MANUAL) SWITCH-BATT#2	SW#2 - OVERSPEED
CB - COOLANT BRIDGE	TG - TEMPERATURE GAUGE(WATER)
DR - DROPPING RESISTOR(24V ONLY)	TH - TACHOMETER - HOURMETER
GS - GOVERNOR SOLENOID	TS - TEMPERATURE SENDER(WATER)
MM - MANUAL MODE POSITION	V1 - VOLTMETER / BATT#1
MP - MAGNETIC PICK-UP	V2 - VOLTMETER / BATT#2
MS - MODE SELECTOR	WL - WARNING LAMP, *CONTROLS NOT IN AUTOMATIC POSITION*
DP - OIL PRESSURE 20#	WS - WATER SOLENOID VALVE
DS - OVERSPEED RESET N.C.	WT - WATER TEMPERATURE N.O. SW 205°F
DV - OVERSPEED VERIFY @ 67%	
PG - PRESSURE GAUGE(LUBE)	

COLOR CODE

A - WHITE	G - BLUE
B - RED	I - PINK
C - ORANGE	J - BLACK
D - YELLOW	K - BROWN
E - GREEN	L - GRAY
F - GREEN	M - PURPLE
G - BLUE	



- NOTES:
- BROKEN LINE (- - -) SYMBOLS INDICATE COMPONENTS NOT SUPPLIED BY CLARKE.
 - REFER TO ENGINE MODEL INSTALLATION DATA SHEET FOR SPECIFIC BATTERY AND CABLE SIZE REQUIREMENTS.
 - 12 VOLT SYSTEM DOES NOT INCLUDE THE TWO (DR) DROPPING RESISTORS. RED WIRES (B) CONNECT DIRECTLY TO PG & TG RESPECTIVELY.
 - SOME MODELS HAVE A STARTER THAT IS INTERNALLY GROUNDING; FOR THOSE THE BATTERY NEGATIVE CABLE (GRD) SHOULD BE ATTACHED TO THE ENGINE BLOCK (ALL PAINT SHOULD BE REMOVED TO BARE METAL)
 - JDFP ONLY - ALL OTHER HAVE INTERNAL GROUND.
 - IK6 TURBOCHARGED MODEL ENGINES ONLY.
 - WIRES E25 IS NOT USED ON IK6 NATURALLY ASPIRATED ENGINES.

FOR ENGINES BUILT IN:
US - FEBRUARY 2003 (ALL)
UK - MARCH 2003 (12V DC)
UK - AUGUST 2003 (24V DC)

CONTROLLED DRAWING
 This is a registered part with FM/UL for use on an approved/ listed fire pump driver. No substitutions are allowed. Consult engineering prior to and regarding any change.

THIS DRAWING AND THE INFORMATION HEREON ARE OUR PROPERTY AND MAY BE USED BY OTHERS ONLY AS AUTHORIZED BY US. UNPUBLISHED--ALL RIGHTS RESERVED UNDER THE COPYRIGHT LAWS.		DRAWN	TROY POPE	<h1>CLARKE</h1>
UNLESS OTHERWISE SPECIFIED TOLERANCES ARE:		DATE	09JAN95	
DECIMAL	MM IN	ENGR	JTWHITNEY	
.X	± .005 ± .001	CHECK		WIRING DIAGRAM, F.P. ENGINE w/ELECTRIC GAUGES
.XX	± .002 ± .001	INSPECT	N	NEGATIVE GROUND, 12 or 24VDC
.XXX	± .001 ± .001	SERIES CODE	MP	SIZE PART NO. C07602
FRACTIONAL	±	SCALE	NONE	UNITS NONE
ANGULAR	±	SCALE	NONE	UNITS NONE
		SHEET	1	DF 1